

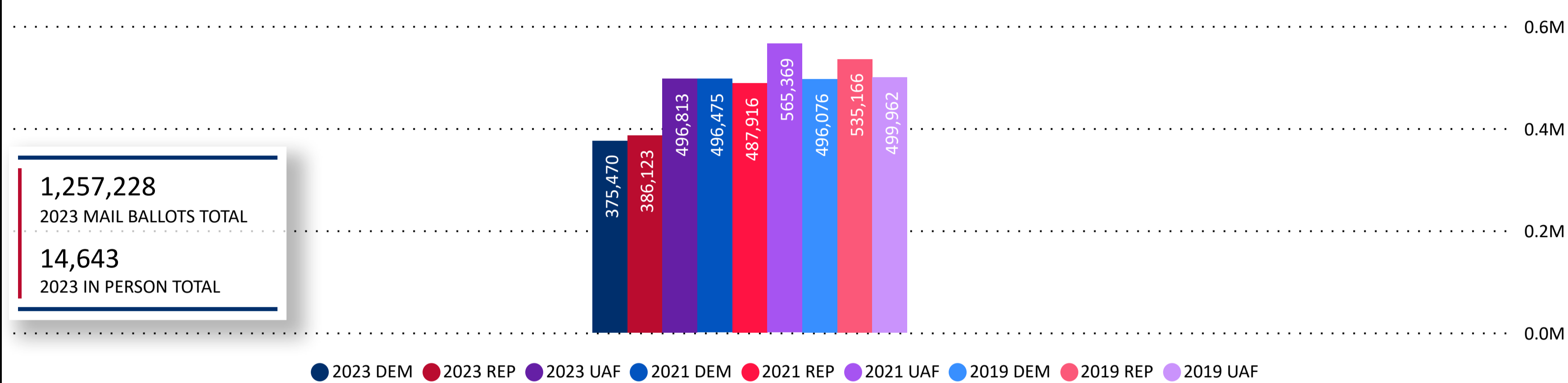
Total Ballots Returned

(as of 3:00 PM, November 7, 2023)

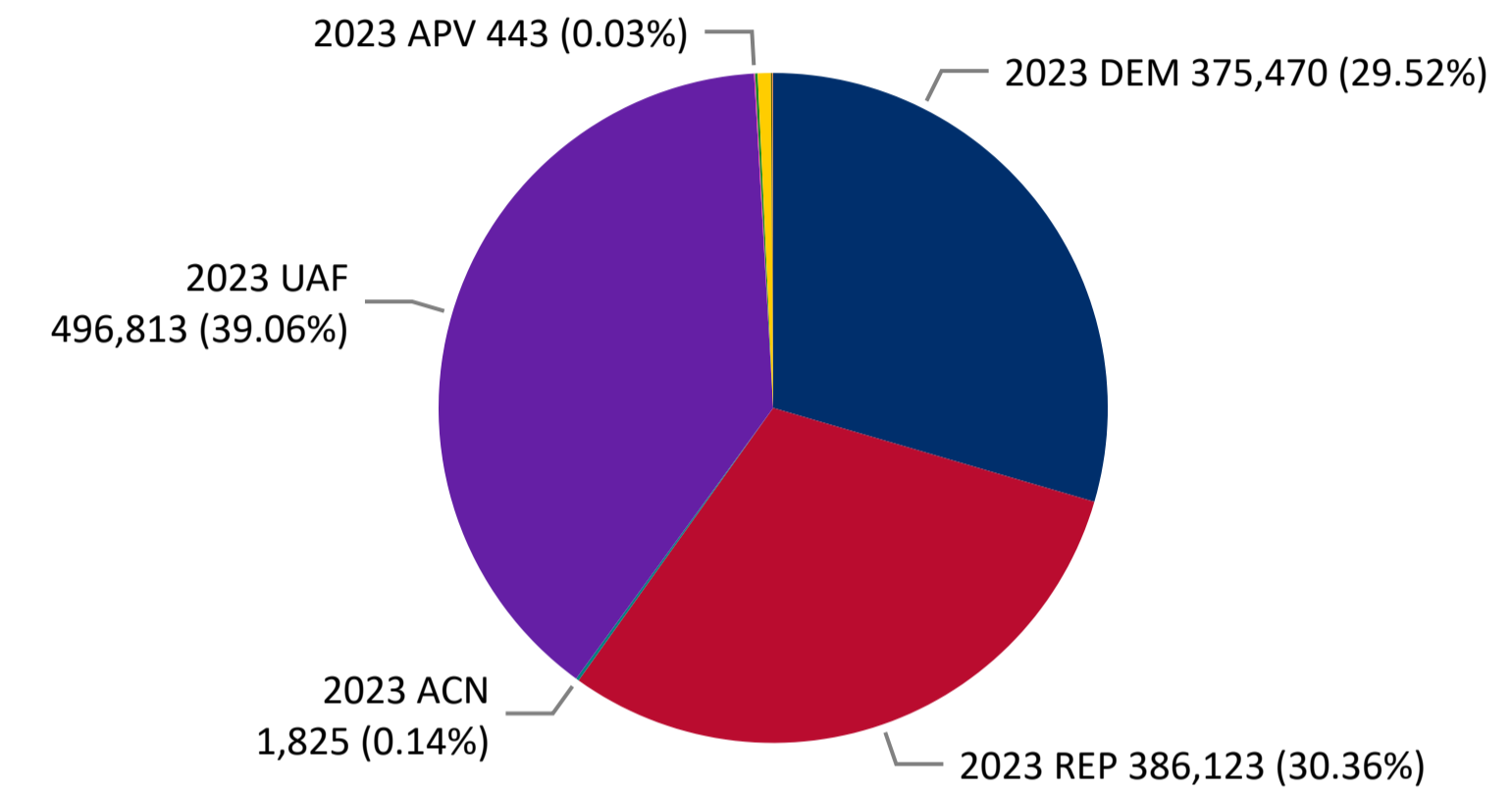
1,271,871

November 7, 2023
Election Day Reporting

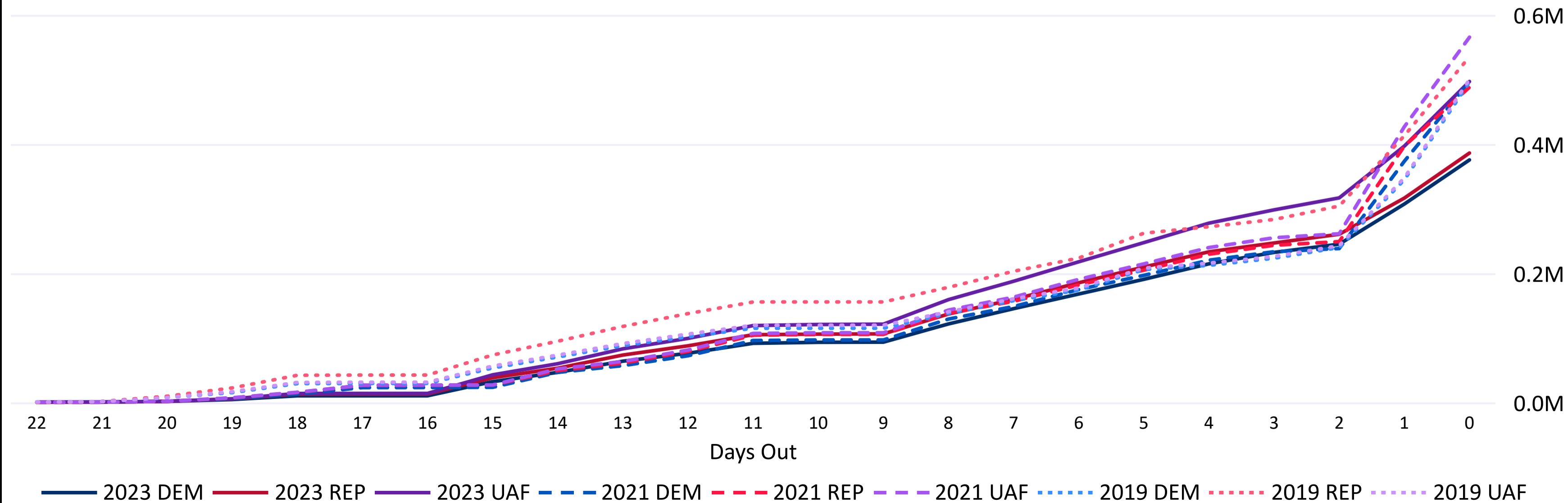
Ballots Returned by Major Party Registration



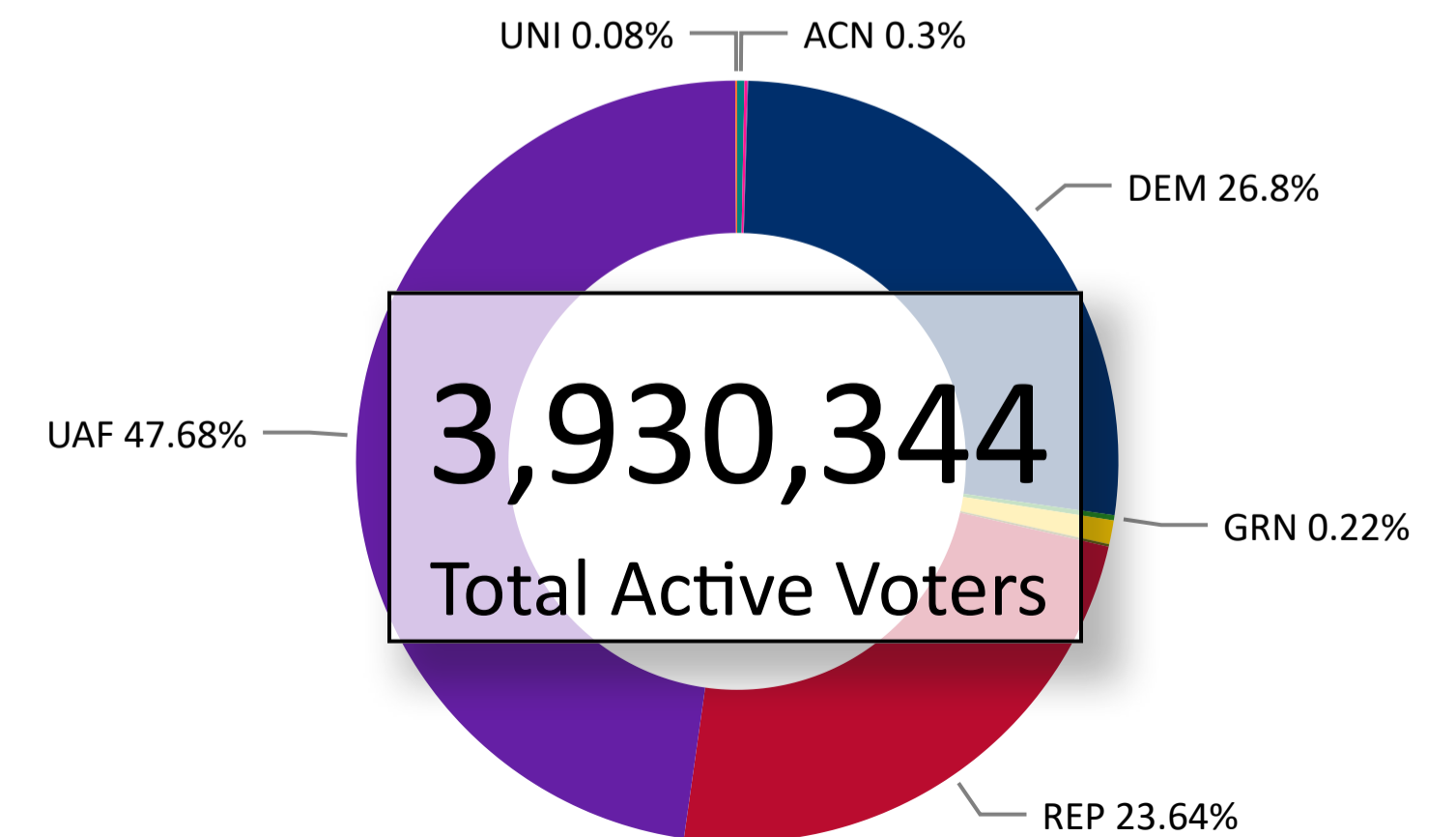
Ballots Returned by Party Registration



Trend Line of Ballots Returned by Day 2019, 2021 & 2023 by Major Party Registration



Percent of Total Active Voters by Party Registration

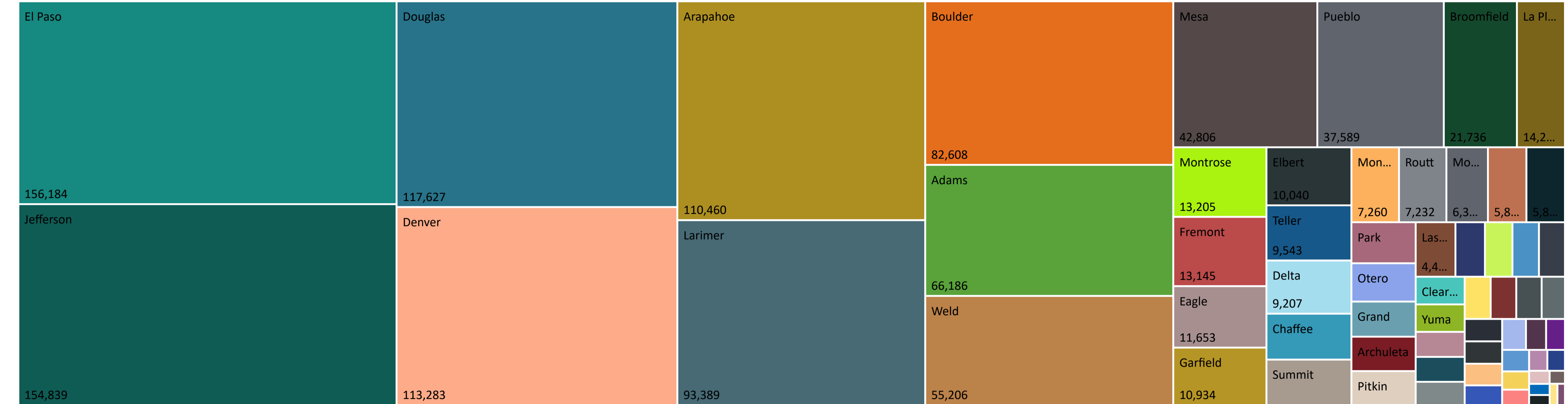


Total Ballots Returned

(as of 3:00 PM, November 7, 2023)

1,271,871

November 7, 2023
Election Day Reporting



66,186	3,275	110,460	4,502	1,182	1,183	82,608	21,736	7,941	546
Adams	Alamosa	Arapahoe	Archuleta	Baca	Bent	Boulder	Broomfield	Chaffee	Cheyenne
2,760	2,000	854	1,001	2,337	9,207	113,283	779	117,627	11,653
Clear Creek	Conejos	Costilla	Crowley	Custer	Delta	Denver	Dolores	Douglas	Eagle
156,184	10,040	13,145	10,934	2,183	4,592	5,877	327	2,488	403
El Paso	Elbert	Fremont	Garfield	Gilpin	Grand	Gunnison	Hinsdale	Huerfano	Jackson
154,839	428	2,202	14,263	1,706	93,389	4,414	1,266	5,874	42,806
Jefferson	Kiowa	Kit Carson	La Plata	Lake	Larimer	Las Animas	Lincoln	Logan	Mesa
466	2,881	7,260	13,205	6,334	5,015	2,235	5,370	1,516	4,468
Mineral	Moffat	Montezuma	Montrose	Morgan	Otero	Ouray	Park	Phillips	Pitkin
2,941	37,589	1,652	3,052	7,232	1,495	340	2,495	750	7,895
Prowers	Pueblo	Rio Blanco	Rio Grande	Routt	Saguache	San Juan	San Miguel	Sedgwick	Summit
9,543	1,708	55,206	2,743						
Teller	Washington	Weld	Yuma						

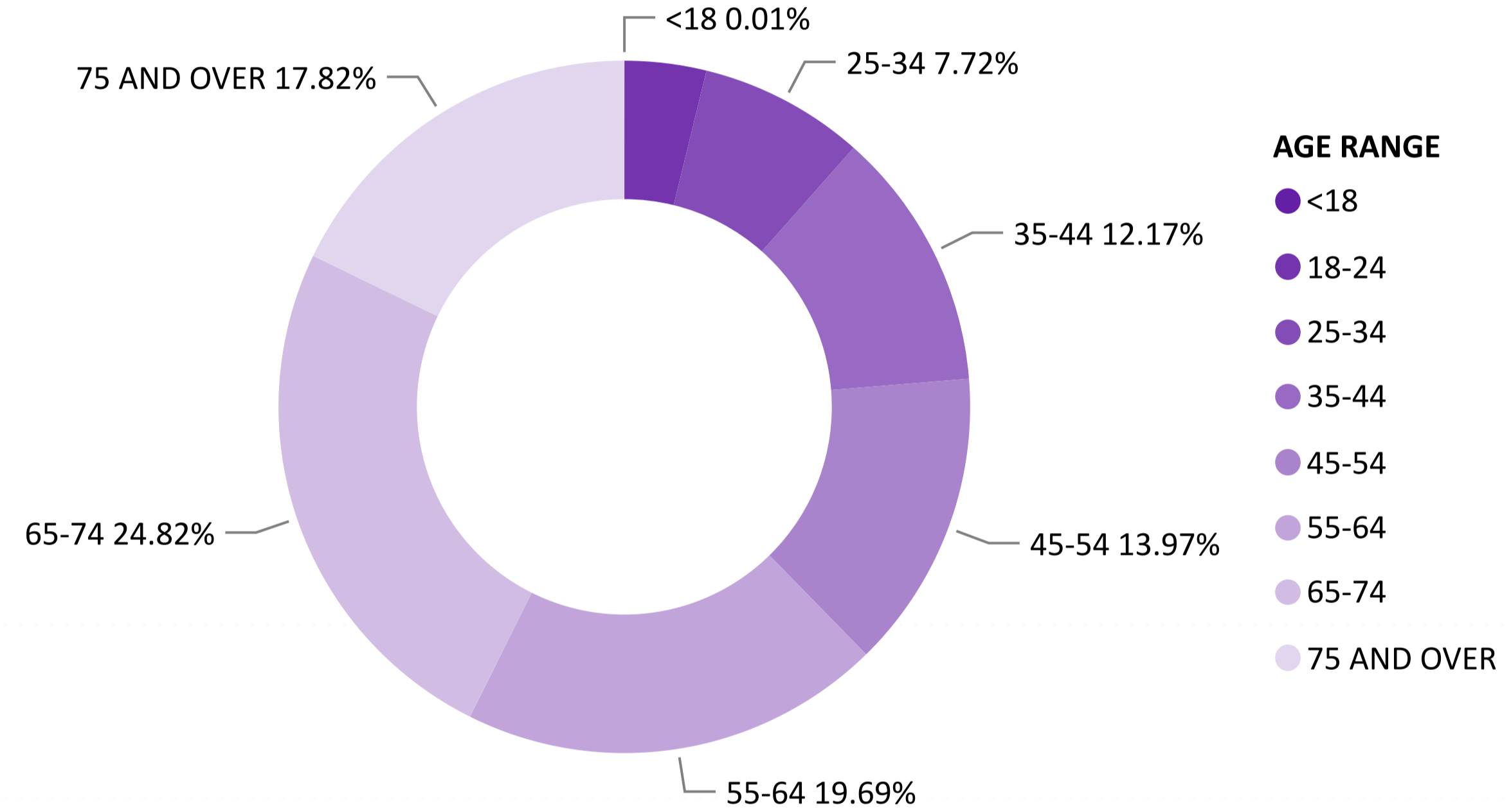
Total Ballots Returned

(as of 3:00 PM, November 7, 2023)

1,271,871

November 7, 2023
Election Day Reporting

Ballots Returned by Age Range



Ballots Returned by Gender/Age Range

