

Total Ballots Returned

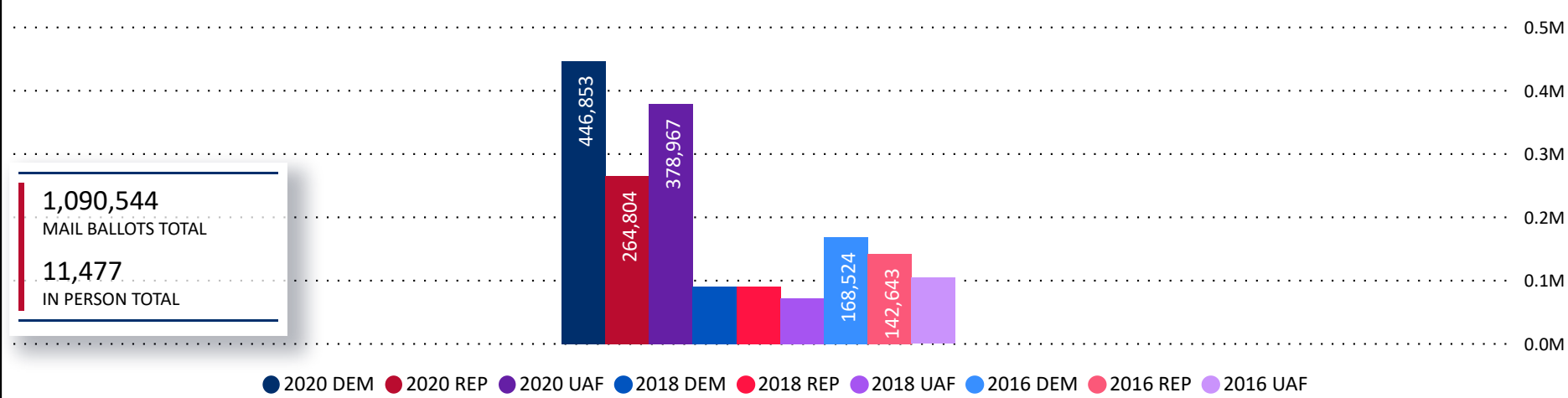
(as of October 20, 2020)

1,102,021

October 21, 2020

14 Days Out from Election Day

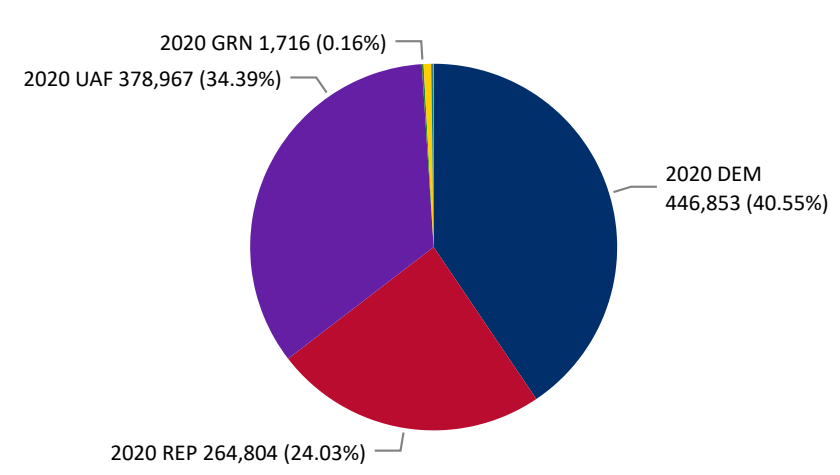
Ballots Returned 14 Days Out by Major Party Registration



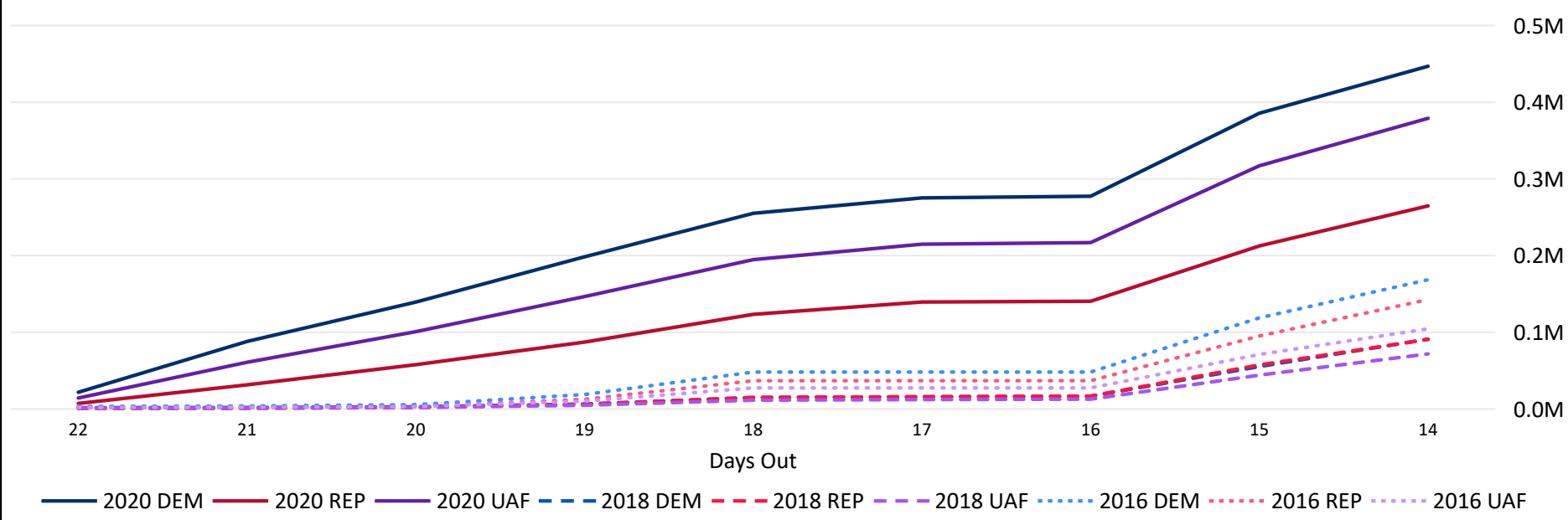
1,090,544
MAIL BALLOTS TOTAL

11,477
IN PERSON TOTAL

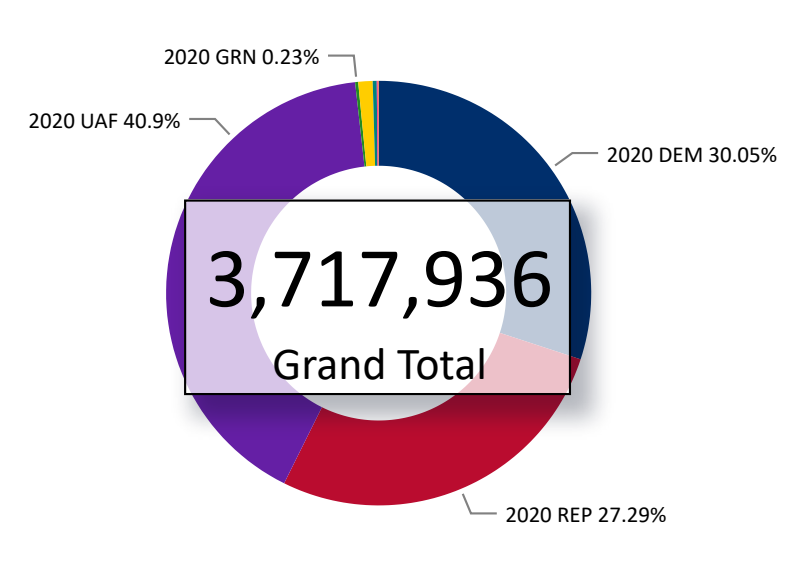
Ballots Returned by Party Registration



Trend Line of Ballots Returned by Day 2016, 2018 & 2020 by Major Party Registration



Percent of Total Active Voters by Party Registration



Total Ballots Returned

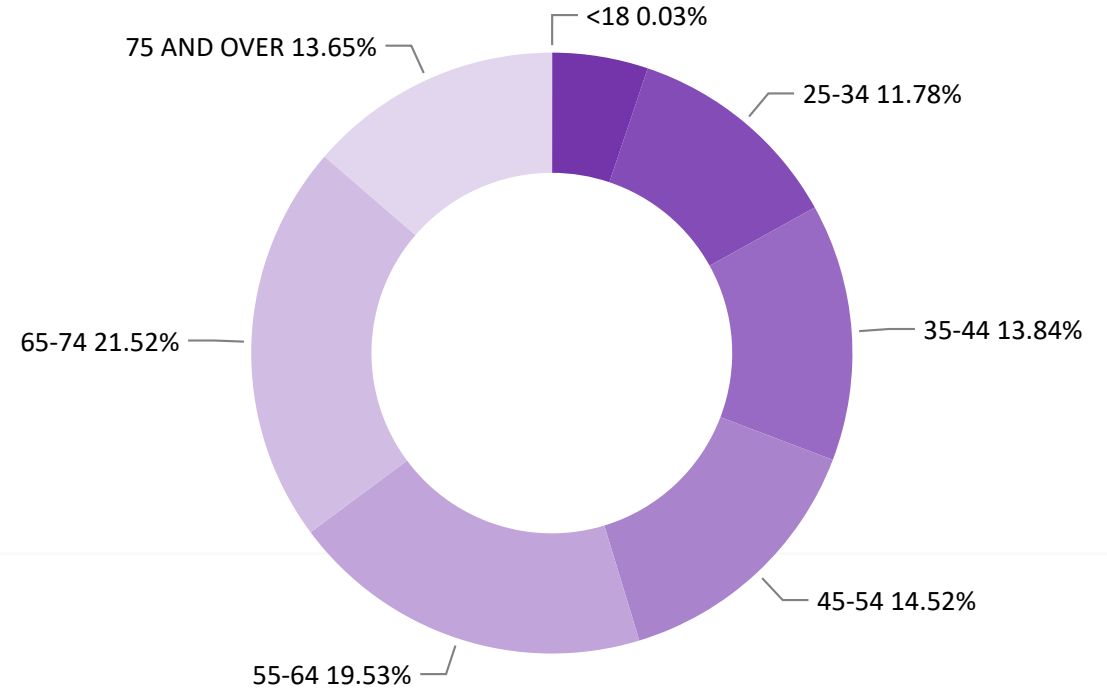
(as of October 20, 2020)

1,102,021

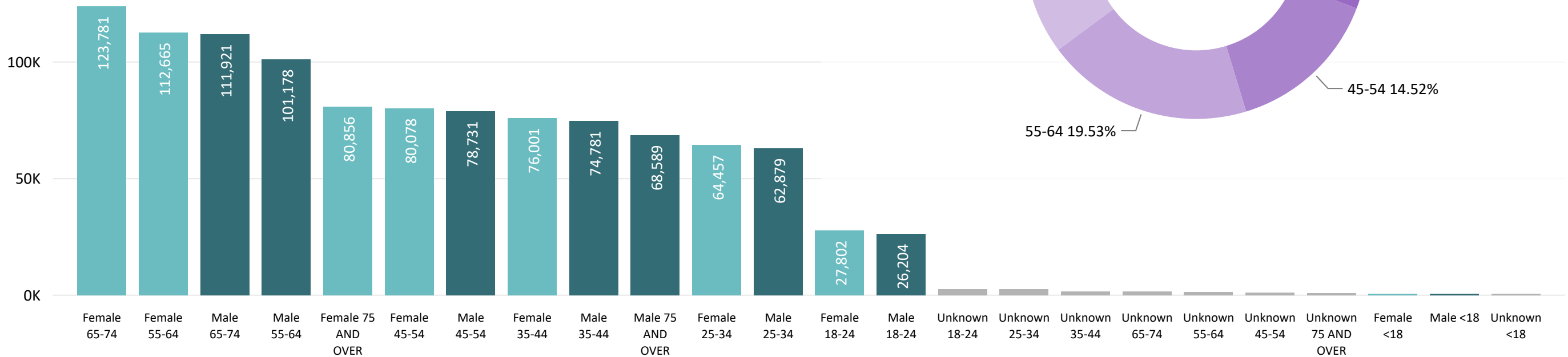
October 21, 2020

14 Days Out from Election Day

Ballots Returned by Age Range



Ballots Returned by Gender/Age Range



Total Ballots Returned

(as of October 20, 2020)

1,102,021

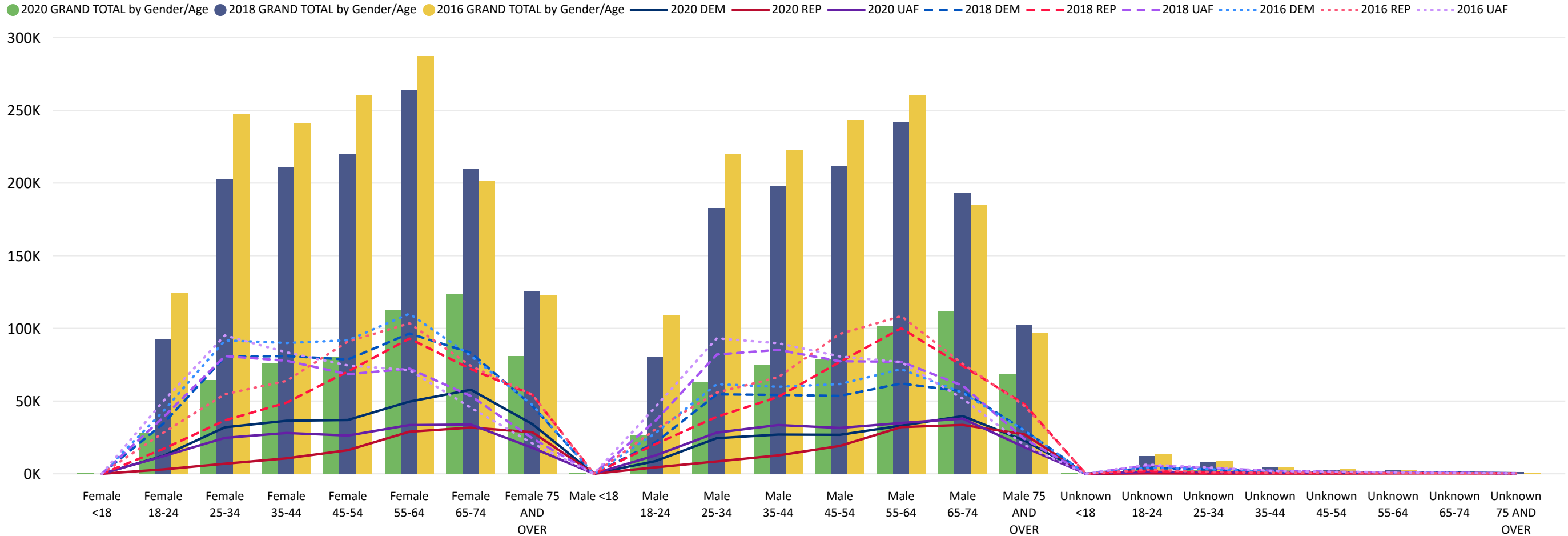
October 21, 2020

14 Days Out from Election Day

2020 General Election Ballot Return Reporting:
Comparison of 2020, 2018, & 2016 by Gender and Age
& Major Party

Chart reflects current totals for 2020
and final totals from 2018 & 2016

Comparison of Ballots Returned by Gender/Age Range & Major Party 2020, 2018, & 2016





Colorado Secretary of State

Total Ballots Returned

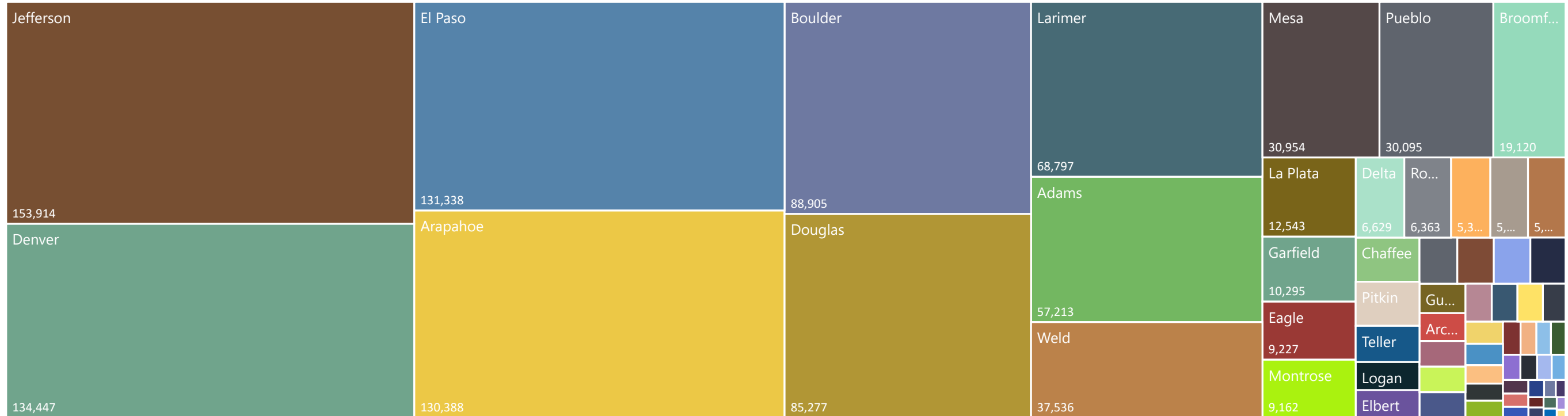
(as of October 20, 2020)

October 21, 2020

2020 General Election Ballot Return Reporting: by County

1,102,021

14 Days Out from Election Day



| | | | | | | | | | |
|-------------|------------|------------|------------|--------|----------|------------|------------|----------|----------|
| 57,213 | 1,984 | 130,388 | 2,189 | 596 | 751 | 88,905 | 19,120 | 4,791 | 342 |
| Adams | Alamosa | Arapahoe | Archuleta | Baca | Bent | Boulder | Broomfield | Chaffee | Cheyenne |
| 1,415 | 580 | 830 | 190 | 888 | 6,629 | 134,447 | 262 | 85,277 | 9,227 |
| Clear Creek | Conejos | Costilla | Crowley | Custer | Delta | Denver | Dolores | Douglas | Eagle |
| 131,338 | 2,981 | 5,120 | 10,295 | 823 | 2,763 | 2,293 | 266 | 1,657 | 284 |
| El Paso | Elbert | Fremont | Garfield | Gilpin | Grand | Gunnison | Hinsdale | Huerfano | Jackson |
| 153,914 | 258 | 993 | 12,543 | 1,091 | 68,797 | 2,867 | 582 | 3,049 | 30,954 |
| Jefferson | Kiowa | Kit Carson | La Plata | Lake | Larimer | Las Animas | Lincoln | Logan | Mesa |
| 199 | 1,461 | 5,363 | 9,162 | 2,960 | 2,862 | 1,636 | 2,009 | 459 | 4,780 |
| Mineral | Moffat | Montezuma | Montrose | Morgan | Otero | Ouray | Park | Phillips | Pitkin |
| 1,365 | 30,095 | 1,168 | 1,993 | 6,363 | 628 | 115 | 1,690 | 458 | 5,130 |
| Prowers | Pueblo | Rio Blanco | Rio Grande | Routt | Saguache | San Juan | San Miguel | Sedgwick | Summit |
| 3,915 | 711 | 37,536 | 1,071 | | | | | | |
| Teller | Washington | Weld | Yuma | | | | | | |