

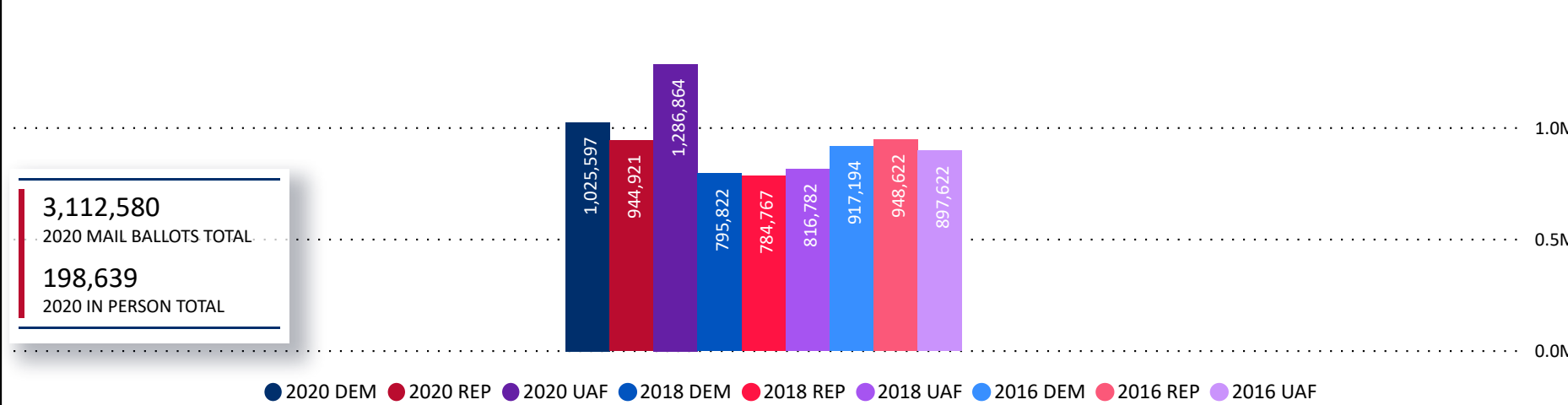
Total Ballots Returned

AS OF NOVEMBER 5 AT 11:30 PM

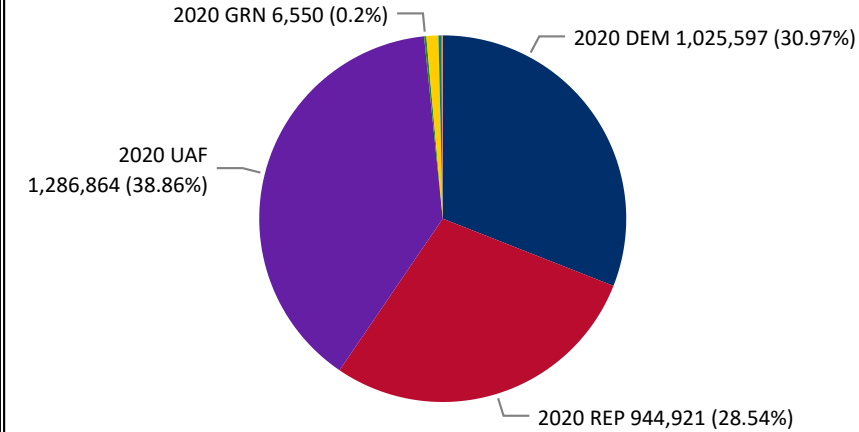
3,311,219

November 6, 2020
ELECTION DAY RETURNS

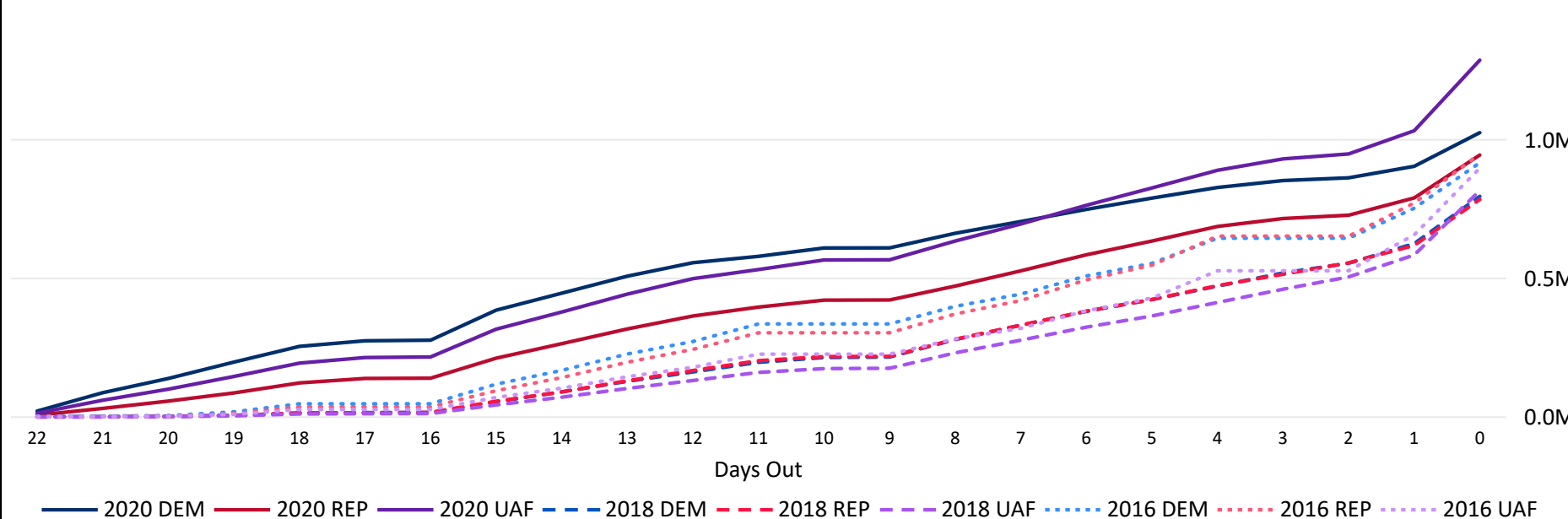
Ballots Returned November 4th as of 3:15 PM by Major Party Registration



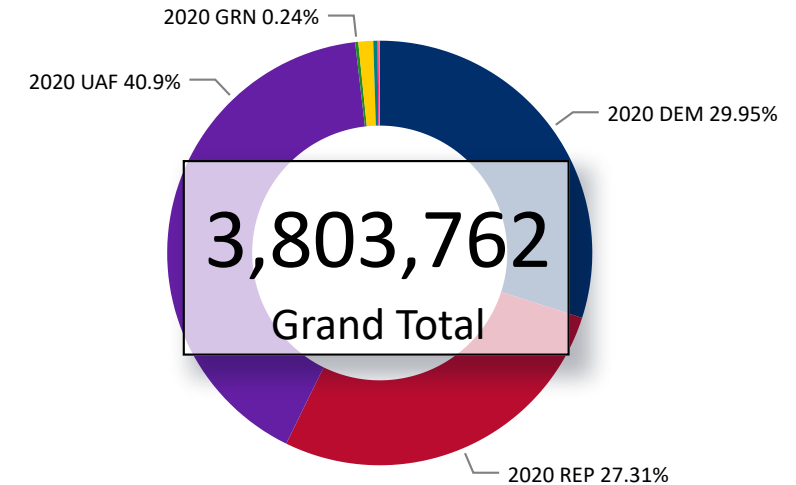
Ballots Returned by Party Registration



Trend Line of Ballots Returned by Day 2016, 2018 & 2020 by Major Party Registration



Percent of Total Active Voters by Party Registration



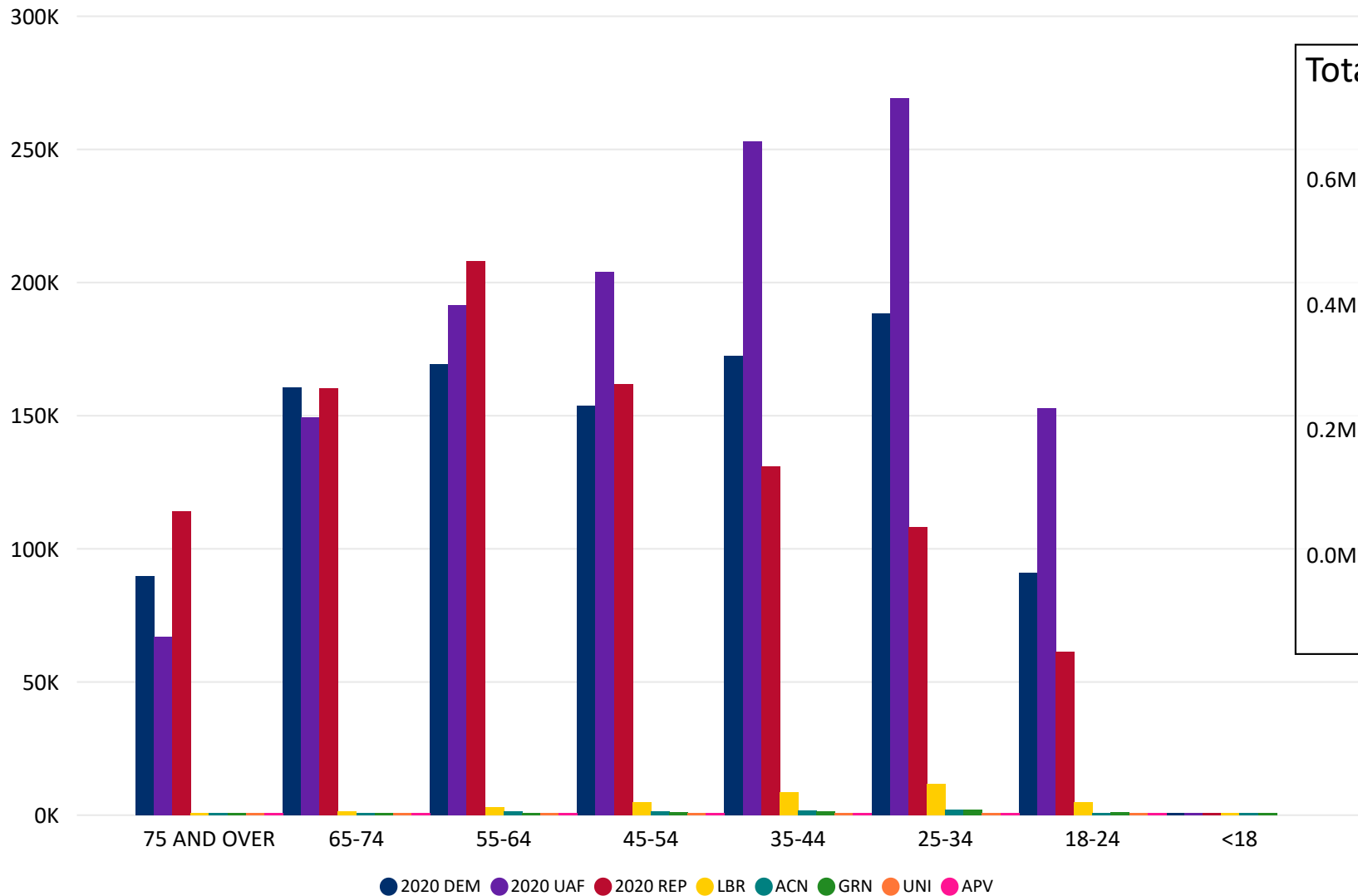
Total Ballots Returned

AS OF NOVEMBER 5 AT 11:30 PM

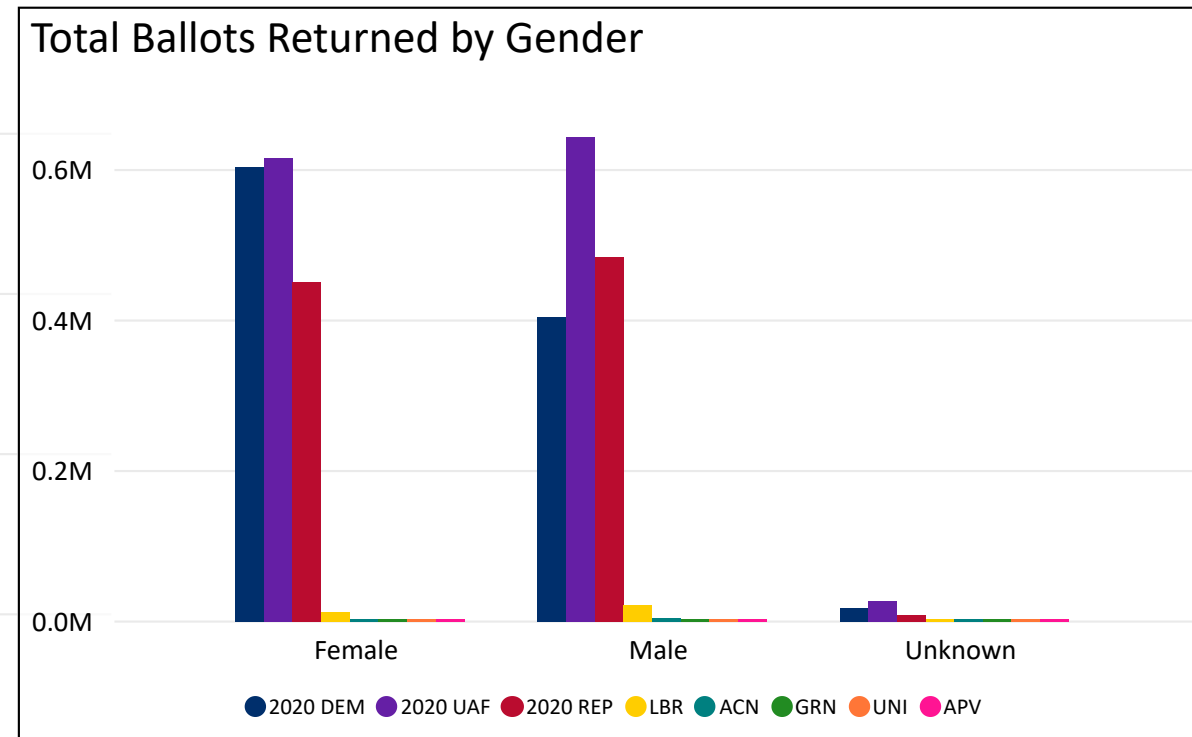
3,311,219

November 6, 2020
ELECTION DAY RETURNS

Ballot Type Returned by Age Range



Total Ballots Returned by Gender



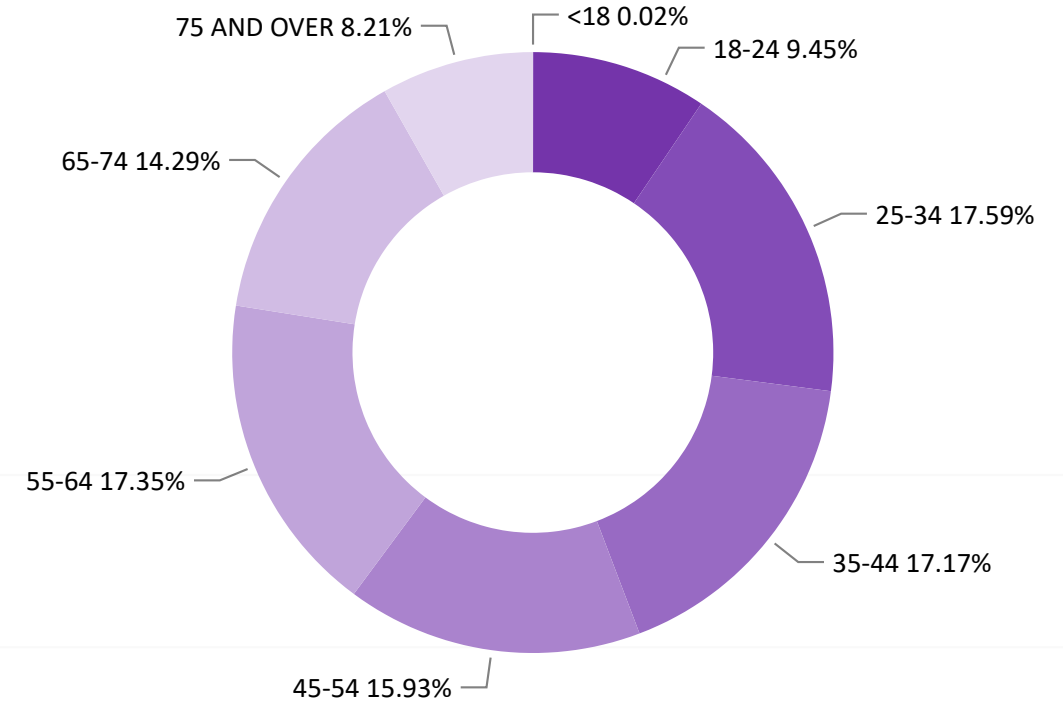
Total Ballots Returned

AS OF NOVEMBER 5 AT 11:30 PM

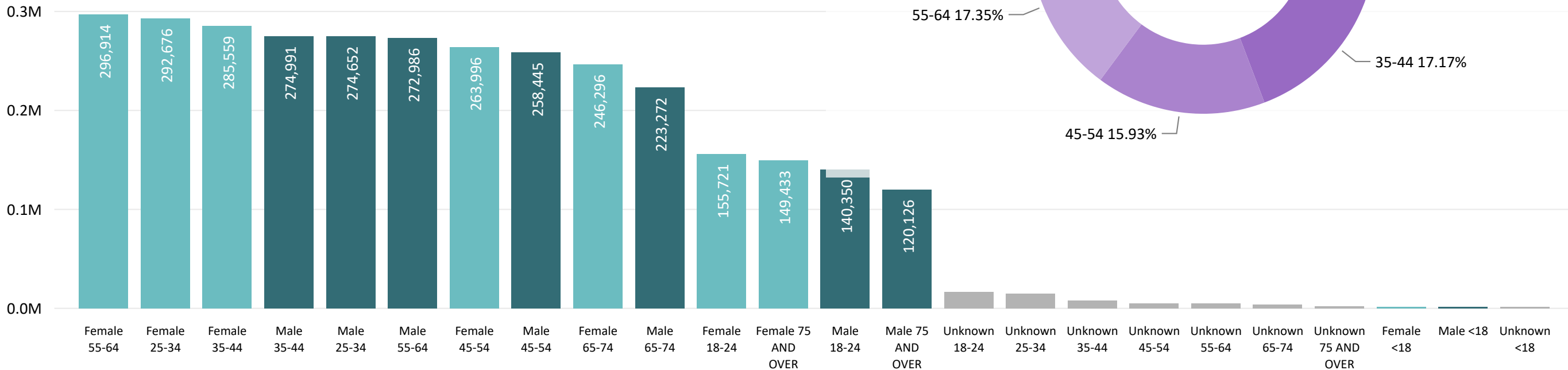
3,311,219

November 6, 2020
ELECTION DAY RETURNS

Ballots Returned by Age Range



Ballots Returned by Gender/Age Range



Total Ballots Returned

AS OF NOVEMBER 5 AT 11:30 PM

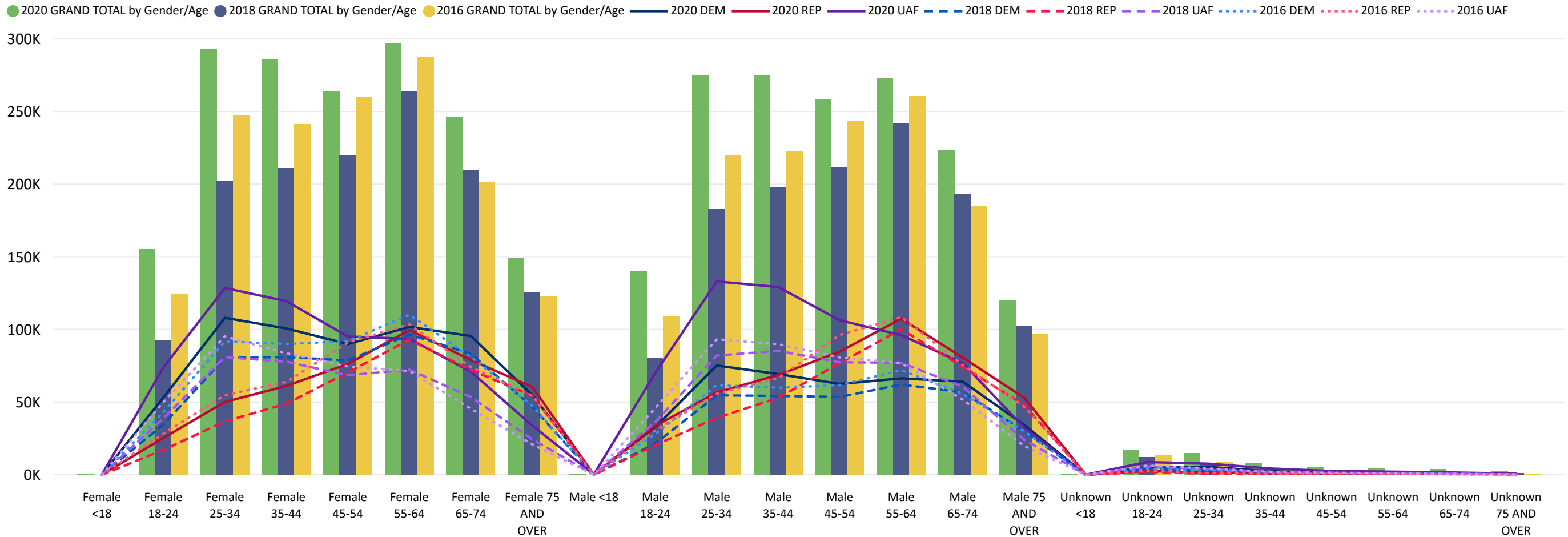
3,311,219

November 6, 2020
ELECTION DAY RETURNS

2020 General Election Ballot Return Reporting:
Comparison of 2020, 2018, & 2016 by Gender and Age
& Major Party

Chart reflects current totals for 2020
and final totals from 2018 & 2016

Comparison of Ballots Returned by Gender/Age Range & Major Party 2020, 2018, & 2016

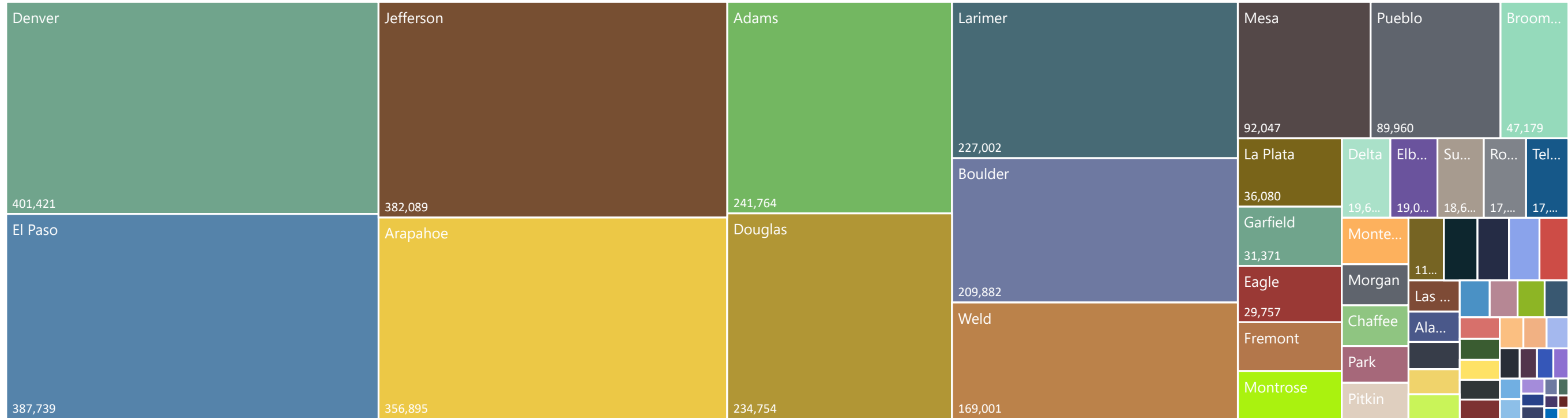


Total Ballots Returned

AS OF NOVEMBER 5 AT 11:30 PM

2020 General Election Ballot Return Reporting: by County **3,311,219**

November 6, 2020
ELECTION DAY RETURNS



241,764	7,936	356,895	9,233	2,254	2,325	209,882	47,179	13,850	1,155
Adams	Alamosa	Arapahoe	Archuleta	Baca	Bent	Boulder	Broomfield	Chaffee	Cheyenne
6,555	4,422	2,147	1,781	3,679	19,631	401,421	1,465	234,754	29,757
Clear Creek	Conejos	Costilla	Crowley	Custer	Delta	Denver	Dolores	Douglas	Eagle
387,739	19,029	25,844	31,371	4,262	10,072	11,289	639	4,459	892
El Paso	Elbert	Fremont	Garfield	Gilpin	Grand	Gunnison	Hinsdale	Huerfano	Jackson
382,089	910	3,916	36,080	4,027	227,002	8,110	2,672	10,650	92,047
Jefferson	Kiowa	Kit Carson	La Plata	Lake	Larimer	Las Animas	Lincoln	Logan	Mesa
764	7,086	15,754	25,192	13,885	9,699	4,069	12,452	2,499	12,196
Mineral	Moffat	Montezuma	Montrose	Morgan	Otero	Ouray	Park	Phillips	Pitkin
5,615	89,960	3,721	6,382	17,135	3,455	571	5,216	1,478	18,682
Prowers	Pueblo	Rio Blanco	Rio Grande	Routt	Saguache	San Juan	San Miguel	Sedgwick	Summit
17,130	3,034	169,001	5,059						
Teller	Washington	Weld	Yuma						