

# Latitude 5590

## Owners Manual



## Notes, cautions, and warnings

 | **NOTE:** A NOTE indicates important information that helps you make better use of your product.

 | **CAUTION:** A CAUTION indicates either potential damage to hardware or loss of data and tells you how to avoid the problem.

 | **WARNING:** A WARNING indicates a potential for property damage, personal injury, or death.

© 2018 Dell Inc. or its subsidiaries. All rights reserved. Dell, EMC, and other trademarks are trademarks of Dell Inc. or its subsidiaries. Other trademarks may be trademarks of their respective owners.

<b>1 Working on your computer.....</b>	<b>6</b>
Safety precautions.....	6
Standby power.....	6
Bonding .....	6
Electrostatic discharge — ESD protection.....	6
ESD field service kit .....	7
Transporting sensitive components.....	8
Before working inside your computer.....	8
After working inside your computer.....	8
<b>2 Removing and installing components.....</b>	<b>10</b>
Removing and installing components.....	10
Recommended tools.....	10
Screw size list.....	10
Subscriber Identity Module(SIM) board.....	11
Base cover.....	12
Battery.....	13
Solid State Drive — optional .....	14
Hard drive.....	16
WLAN card.....	18
WWAN card.....	19
Coin cell battery.....	21
Memory modules.....	22
Keyboard.....	23
Heat sink .....	26
System fan.....	27
Power connector port.....	28
Chassis frame.....	29
System board.....	31
Touchpad buttons board.....	34
SmartCard module.....	36
LED board.....	38
Speaker.....	40
Hinge cap.....	41
Display assembly.....	42
Display bezel.....	46
Display hinges.....	47
Display panel.....	49
Display (eDP) cable.....	51
Camera.....	52
Display back cover assembly.....	53
Palm rest.....	54

<b>3 Technology and components.....</b>	<b>56</b>
Power adapter.....	56
Kaby Lake — 7th Generation Intel Core processors.....	56
Kaby lake Specifications.....	57
Kaby Lake Refresh — 8th Generation Intel Core processors.....	57
Kaby Lake Refresh Specifications.....	58
DDR4.....	58
DDR4 Details.....	58
Memory Errors.....	59
HDMI 1.4- HDMI 2.0.....	59
HDMI 1.4- HDMI 2.0 Features.....	59
Advantages of HDMI.....	60
USB features.....	60
USB 3.0/USB 3.1 Gen 1 (SuperSpeed USB).....	60
Speed.....	61
Applications.....	61
Compatibility.....	62
Advantages of Displayport over USB Type-C.....	62
USB Type-C.....	62
Alternate Mode.....	62
USB Power Delivery.....	62
USB Type-C and USB 3.1.....	63
<b>4 System specifications.....</b>	<b>64</b>
Technical specifications.....	64
System specifications.....	64
Processor specifications.....	64
Memory specifications.....	64
Storage specifications.....	65
Audio specifications.....	65
Video specifications.....	65
Camera specifications.....	66
Communication specifications.....	66
Port and connector specifications.....	66
Contactless smart card specifications.....	67
Display specifications.....	67
Keyboard specifications.....	68
Touchpad specifications.....	68
Battery specifications.....	68
AC Adapter specifications.....	69
Physical specifications.....	69
Environmental specifications.....	70
<b>5 System setup options.....</b>	<b>71</b>
Boot Sequence.....	71
Navigation keys.....	72



System Setup overview.....	72
Accessing System Setup.....	72
General screen options.....	72
System Configuration screen options.....	73
Video screen options.....	76
Security screen options.....	76
Secure Boot screen options.....	78
Intel Software Guard Extensions.....	78
Performance screen options.....	79
Power Management screen options.....	79
POST Behavior screen options.....	81
Virtualization support screen options.....	82
Wireless screen options.....	82
Maintenance screen options.....	83
System Log screen options.....	83
Updating the BIOS in Windows .....	83
System and setup password.....	84
Assigning a system password and setup password.....	84
Deleting or changing an existing system and or setup password.....	84
<b>6 Software.....</b>	<b>86</b>
Supported operating systems.....	86
Downloading drivers.....	86
Downloading the chipset driver.....	86
Intel chipset drivers.....	87
Intel HD Graphics drivers.....	87
<b>7 Troubleshooting.....</b>	<b>88</b>
Enhanced Pre-Boot System Assessment — ePSA diagnostics.....	88
Running the ePSA diagnostics.....	88
Real Time Clock reset.....	88
<b>8 Contacting Dell.....</b>	<b>90</b>



# Working on your computer

## Safety precautions

The safety precautions chapter details the primary steps to be taken before performing any disassembly instructions.

Observe the following safety precautions before you perform any installation or break/fix procedures involving disassembly or reassembly:

- Turn off the system and all attached peripherals.
- Disconnect the system and all attached peripherals from AC power.
- Disconnect all network cables, telephone, and telecommunications lines from the system.
- Use an ESD field service kit when working inside any notebook to avoid electrostatic discharge (ESD) damage.
- After removing any system component, carefully place the removed component on an anti-static mat.
- Wear shoes with non-conductive rubber soles to reduce the chance of getting electrocuted.

## Standby power

Dell products with standby power must be unplugged before you open the case. Systems that incorporate standby power are essentially powered while turned off. The internal power enables the system to be remotely turned on (wake on LAN) and suspended into a sleep mode and has other advanced power management features.

Unplugging, pressing and holding the power button for 15 seconds should discharge residual power in the system board, notebooks

## Bonding

Bonding is a method for connecting two or more grounding conductors to the same electrical potential. This is done through the use of a field service electrostatic discharge (ESD) kit. When connecting a bonding wire, ensure that it is connected to bare metal and never to a painted or non-metal surface. The wrist strap should be secure and in full contact with your skin, and ensure that you remove all jewelry such as watches, bracelets, or rings prior to bonding yourself and the equipment.

## Electrostatic discharge — ESD protection

ESD is a major concern when you handle electronic components, especially sensitive components such as expansion cards, processors, memory DIMMs, and system boards. Very slight charges can damage circuits in ways that may not be obvious, such as intermittent problems or a shortened product life span. As the industry pushes for lower power requirements and increased density, ESD protection is an increasing concern.

Due to the increased density of semiconductors used in recent Dell products, the sensitivity to static damage is now higher than in previous Dell products. For this reason, some previously approved methods of handling parts are no longer applicable.

Two recognized types of ESD damage are catastrophic and intermittent failures.

- **Catastrophic** – Catastrophic failures represent approximately 20 percent of ESD-related failures. The damage causes an immediate and complete loss of device functionality. An example of catastrophic failure is a memory DIMM that has received a static shock and immediately generates a "No POST/No Video" symptom with a beep code emitted for missing or nonfunctional memory.
- **Intermittent** – Intermittent failures represent approximately 80 percent of ESD-related failures. The high rate of intermittent failures means that most of the time when damage occurs, it is not immediately recognizable. The DIMM receives a static shock, but the

tracing is merely weakened and does not immediately produce outward symptoms related to the damage. The weakened trace may take weeks or months to melt, and in the meantime may cause degradation of memory integrity, intermittent memory errors, etc.

The more difficult type of damage to recognize and troubleshoot is the intermittent (also called latent or "walking wounded") failure.

Perform the following steps to prevent ESD damage:

- Use a wired ESD wrist strap that is properly grounded. The use of wireless anti-static straps is no longer allowed; they do not provide adequate protection. Touching the chassis before handling parts does not ensure adequate ESD protection on parts with increased sensitivity to ESD damage.
- Handle all static-sensitive components in a static-safe area. If possible, use anti-static floor pads and workbench pads.
- When unpacking a static-sensitive component from its shipping carton, do not remove the component from the anti-static packing material until you are ready to install the component. Before unwrapping the anti-static packaging, ensure that you discharge static electricity from your body.
- Before transporting a static-sensitive component, place it in an anti-static container or packaging.

## ESD field service kit

The unmonitored Field Service kit is the most commonly used service kit. Each Field Service kit includes three main components: anti-static mat, wrist strap, and bonding wire.

### Components of an ESD field service kit

The components of an ESD field service kit are:

- **Anti-Static Mat** – The anti-static mat is dissipative and parts can be placed on it during service procedures. When using an anti-static mat, your wrist strap should be snug and the bonding wire should be connected to the mat and to any bare metal on the system being worked on. Once deployed properly, service parts can be removed from the ESD bag and placed directly on the mat. ESD-sensitive items are safe in your hand, on the ESD mat, in the system, or inside a bag.
- **Wrist Strap and Bonding Wire** – The wrist strap and bonding wire can be either directly connected between your wrist and bare metal on the hardware if the ESD mat is not required, or connected to the anti-static mat to protect hardware that is temporarily placed on the mat. The physical connection of the wrist strap and bonding wire between your skin, the ESD mat, and the hardware is known as bonding. Use only Field Service kits with a wrist strap, mat, and bonding wire. Never use wireless wrist straps. Always be aware that the internal wires of a wrist strap are prone to damage from normal wear and tear, and must be checked regularly with a wrist strap tester in order to avoid accidental ESD hardware damage. It is recommended to test the wrist strap and bonding wire at least once per week.
- **ESD Wrist Strap Tester** – The wires inside of an ESD strap are prone to damage over time. When using an unmonitored kit, it is a best practice to regularly test the strap prior to each service call, and at a minimum, test once per week. A wrist strap tester is the best method for doing this test. If you do not have your own wrist strap tester, check with your regional office to find out if they have one. To perform the test, plug the wrist-strap's bonding-wire into the tester while it is strapped to your wrist and push the button to test. A green LED is lit if the test is successful; a red LED is lit and an alarm sounds if the test fails.
- **Insulator Elements** – It is critical to keep ESD sensitive devices, such as plastic heat sink casings, away from internal parts that are insulators and often highly charged.
- **Working Environment** – Before deploying the ESD Field Service kit, assess the situation at the customer location. For example, deploying the kit for a server environment is different than for a desktop or portable environment. Servers are typically installed in a rack within a data center; desktops or portables are typically placed on office desks or cubicles. Always look for a large open flat work area that is free of clutter and large enough to deploy the ESD kit with additional space to accommodate the type of system that is being repaired. The workspace should also be free of insulators that can cause an ESD event. On the work area, insulators such as Styrofoam and other plastics should always be moved at least 12 inches or 30 centimeters away from sensitive parts before physically handling any hardware components.
- **ESD Packaging** – All ESD-sensitive devices must be shipped and received in static-safe packaging. Metal, static-shielded bags are preferred. However, you should always return the damaged part using the same ESD bag and packaging that the new part arrived in. The ESD bag should be folded over and taped shut and all the same foam packing material should be used in the original box that the new part arrived in. ESD-sensitive devices should be removed from packaging only at an ESD-protected work surface, and parts should never be placed on top of the ESD bag because only the inside of the bag is shielded. Always place parts in your hand, on the ESD mat, in the system, or inside an anti-static bag.
- **Transporting Sensitive Components** – When transporting ESD sensitive components such as replacement parts or parts to be returned to Dell, it is critical to place these parts in anti-static bags for safe transport.



## ESD protection summary

It is recommended that all field service technicians use the traditional wired ESD grounding wrist strap and protective anti-static mat at all times when servicing Dell products. In addition, it is critical that technicians keep sensitive parts separate from all insulator parts while performing service and that they use anti-static bags for transporting sensitive components.

## Transporting sensitive components

When transporting ESD sensitive components such as replacement parts or parts to be returned to Dell, it is critical to place these parts in anti-static bags for safe transport.

## Lifting equipment

Adhere to the following guidelines when lifting heavy weight equipment:

**△ CAUTION: Do not lift greater than 50 pounds. Always obtain additional resources or use a mechanical lifting device.**

- 1 Get a firm balanced footing. Keep your feet apart for a stable base, and point your toes out.
- 2 Tighten stomach muscles. Abdominal muscles support your spine when you lift, offsetting the force of the load.
- 3 Lift with your legs, not your back.
- 4 Keep the load close. The closer it is to your spine, the less force it exerts on your back.
- 5 Keep your back upright, whether lifting or setting down the load. Do not add the weight of your body to the load. Avoid twisting your body and back.
- 6 Follow the same techniques in reverse to set the load down.

## Before working inside your computer

- 1 Ensure that your work surface is flat and clean to prevent the computer cover from being scratched.
- 2 Turn off your computer.
- 3 If the computer is connected to a docking device (docked), undock it.
- 4 Disconnect all network cables from the computer (if available).

**△ CAUTION: If your computer has an RJ45 port, disconnect the network cable by first unplugging the cable from your computer.**

- 5 Disconnect your computer and all attached devices from their electrical outlets.
- 6 Open the display.
- 7 Press and hold the power button for few seconds, to ground the system board.

**△ CAUTION: To guard against electrical shock unplug your computer from the electrical outlet before performing Step # 8.**

**△ CAUTION: To avoid electrostatic discharge, ground yourself by using a wrist grounding strap or by periodically touching an unpainted metal surface at the same time as touching a connector on the back of the computer.**

- 8 Remove any installed ExpressCards or Smart Cards from the appropriate slots.

## After working inside your computer

After you complete any replacement procedure, ensure you connect any external devices, cards, and cables before turning on your computer.



**⚠ CAUTION:** To avoid damage to the computer, use only the battery designed for this particular Dell computer. Do not use batteries designed for other Dell computers.

- 1 Replace the battery.
- 2 Replace the base cover.
- 3 Connect any external devices, such as a port replicator or media base, and replace any cards, such as an ExpressCard.
- 4 Connect any telephone or network cables to your computer.

**⚠ CAUTION:** To connect a network cable, first plug the cable into the network device and then plug it into the computer.

- 5 Connect your computer and all attached devices to their electrical outlets.
- 6 Turn on your computer.



# Removing and installing components

This section provides detailed information on how to remove or install the components from your computer.

## Removing and installing components

This section provides detailed information on how to remove or install the components from your computer.

### Recommended tools

The procedures in this document require the following tools:

- Phillips #0 screwdriver
- Phillips #1 screwdriver
- Plastic scribe

**NOTE:** The #0 screw driver is for screws 0-1 and the #1 screw driver is for screws 2-4

### Screw size list

Table 1.

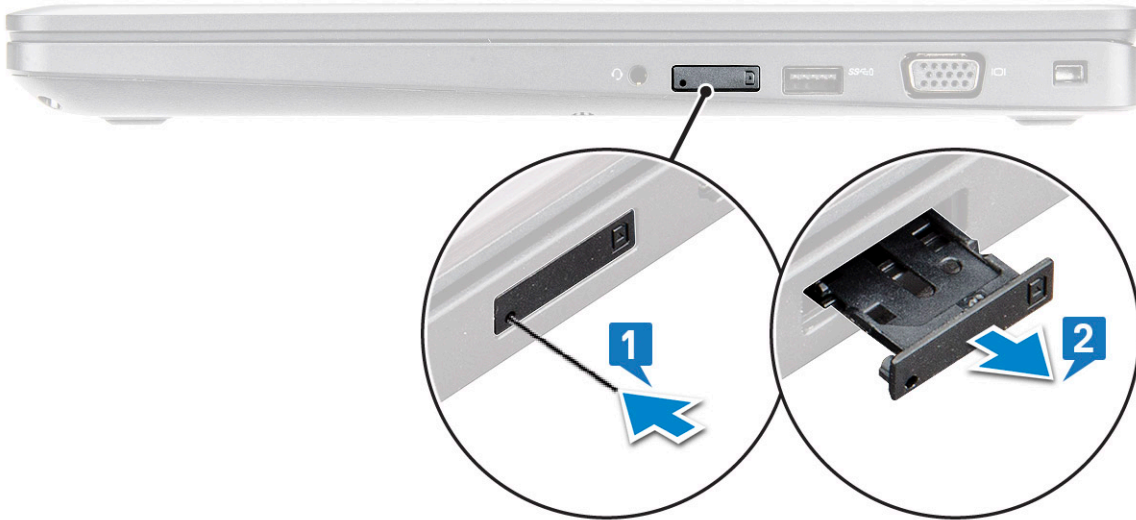
Component	M2.0x3.0	M2.5x3.5	M2.5x5.0	M2.0x2.5	M2x3.0 (OD4.5)	M2x5
Base cover			8			
Battery			1			
Soild State Drive	1					
SSD frame	1					
WLAN card	1					
Keyboard				6		
Heat sink	4					
System board	3					3
Power connector	1					
Chassis frame	5					2
Smart card reader	2					
Touchpad panel	2					
LED board	1					
Hinge cap					2	
Display assembly						6

Component	M2.0x3.0	M2.5x3.5	M2.5x5.0	M2.0x2.5	M2x3.0 (OD4.5)	M2x5
Hinge		6				
Display panel	4					
Hard drive						4
WWAN	1					

## Subscriber Identity Module(SIM) board

### Installing the Subscriber Identification Module card

- 1 Insert a paperclip or a Subscriber Identification Module (SIM) card removal tool into the pinhole [1].
- 2 Pull the SIM card tray to remove it [2].
- 3 Place the SIM on the SIM card tray.
- 4 Push the SIM card tray into the slot until it clicks into place.



### Removing the Subscriber Identification Module card

**⚠ CAUTION:** Removing the Subscriber Identification Module (SIM) card when the computer is on may cause data loss or damage the card. Ensure your computer is turned off or the network connections are disabled.

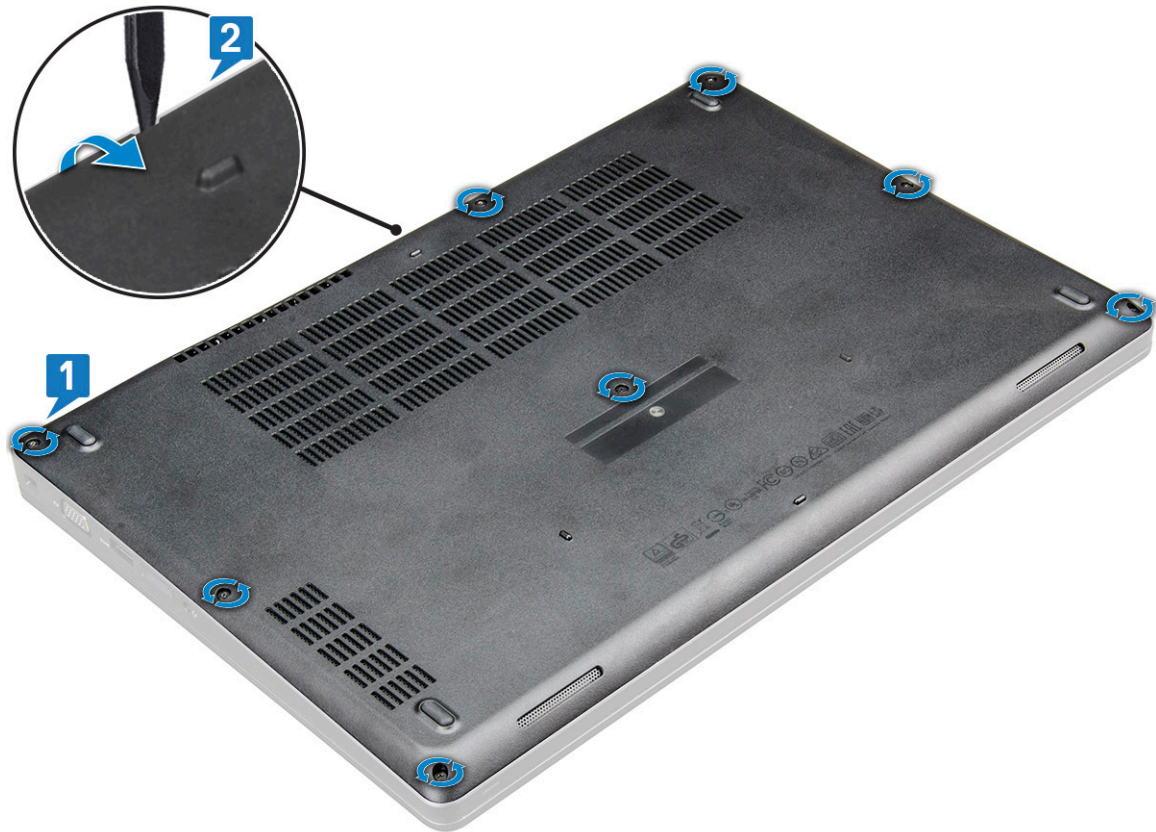
- 1 Insert a paperclip or a SIM card removal tool into the pinhole on the SIM card tray.
- 2 Pull the SIM card tray to remove it.
- 3 Remove the SIM card from the SIM card tray.
- 4 Push the SIM card tray into the slot until it clicks into place.

# Base cover

## Removing the base cover

- 1 Follow the procedure in [Before working inside your computer](#).
- 2 To remove the base cover:
  - a Loosen the M2x5 (8) captive screws that secure the base cover to the laptop [1].
  - b Pry the base cover from the edge [2].

**NOTE:** Ensure to use a plastic scribe to pry the base cover from the edge.



- 3 Lift the base cover away from the laptop.



## Installing the base cover

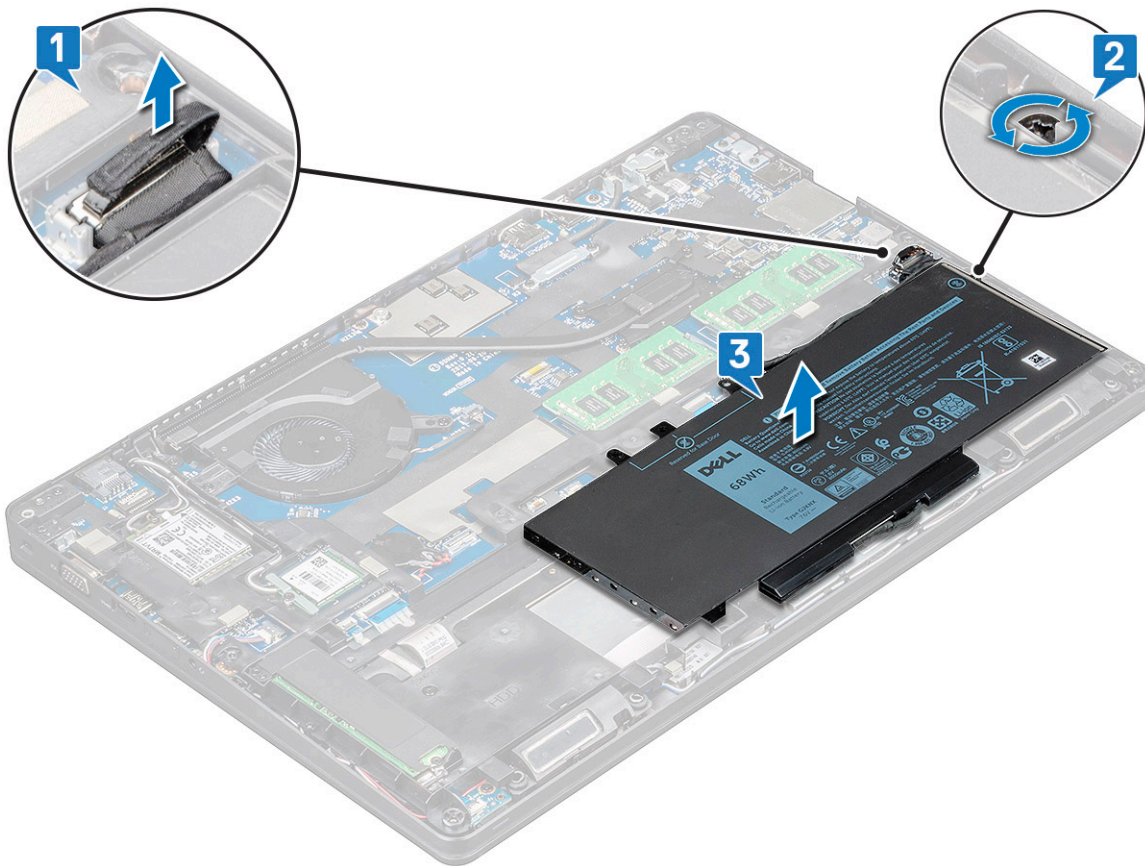
- 1 Align the base cover with the screw holders on the laptop .
- 2 Press the edges of the cover until it clicks into place.
- 3 Tighten the M2x5 screws to secure the base cover to the laptop.
- 4 Follow the procedure in [After working inside your computer](#).

## Battery

### Removing the battery

**NOTE:** A 4-cell 68Whr battery has only 1 screw.

- 1 Follow the procedure in [Before working inside your computer](#).
- 2 Remove the [base cover](#).
- 3 To remove the battery:
  - a Disconnect the battery cable from the connector on the system board [1].
  - b Loosen the M2x5 screw (1) that secure the battery to the laptop [2].
  - c Lift the battery away from the laptop chassis [3].



## Installing the battery

**NOTE:** 68Whr battery can use either a M.2 or 7mm SATA drive.

- 1 Insert the battery into the slot on the laptop.
  - NOTE:** Wrap the battery cable below the battery routing channel to enable proper connection to the connector.
- 2 Connect the battery cable to the connector on the system board.
- 3 Tighten the M2x5 screw to secure the battery to the laptop.
- 4 Install the [base cover](#).
- 5 Follow the procedure in [After working inside your computer](#).

## Solid State Drive — optional

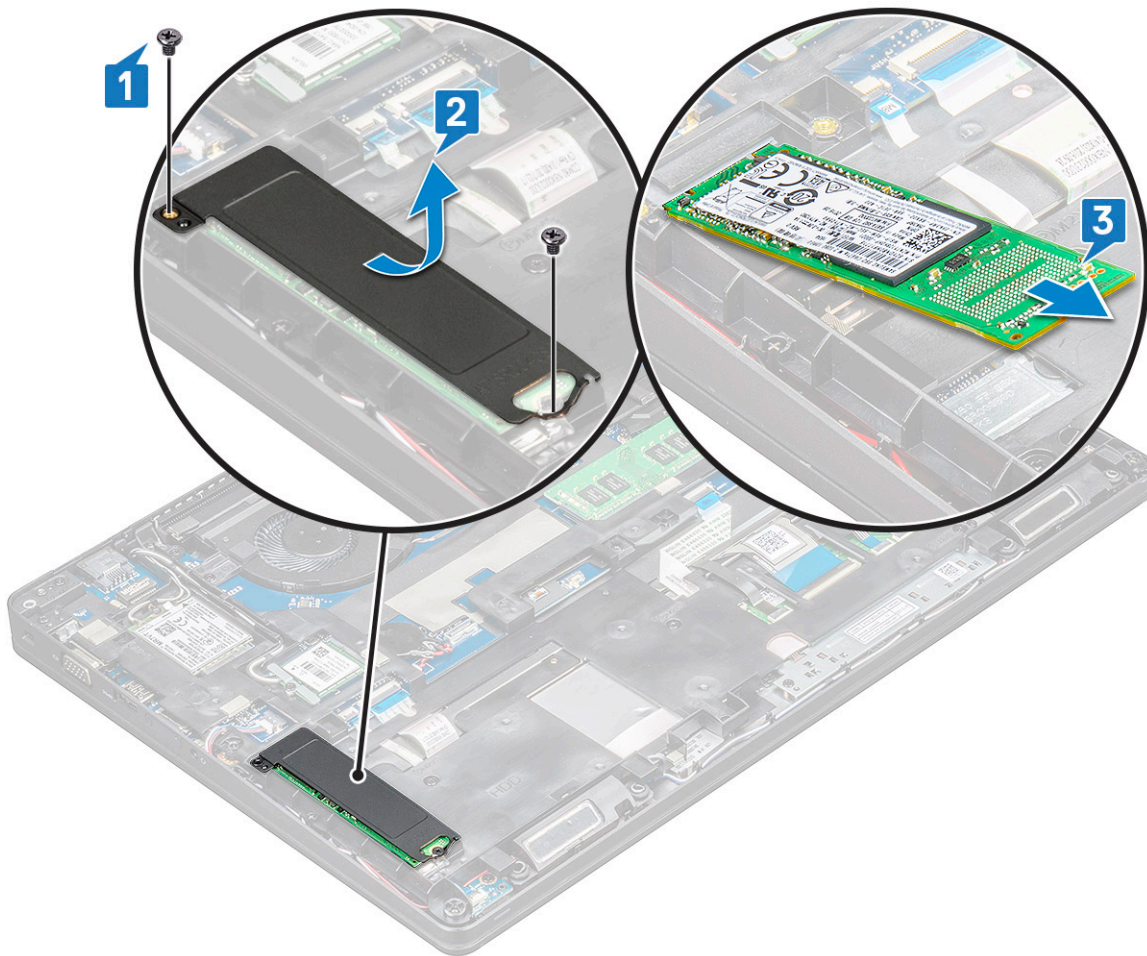
### Removing the M.2 Solid State Drive - SSD

- 1 Follow the procedure in [Before working inside your computer](#).
- 2 Remove the:
  - a [base cover](#)
  - b [battery](#)
- 3 To remove the SSD:
  - a Remove the M2.0x3.0 screw (1) that secures the SSD bracket to the laptop and lift the SSD bracket that secures the SSD card to the system board [1],[2] .

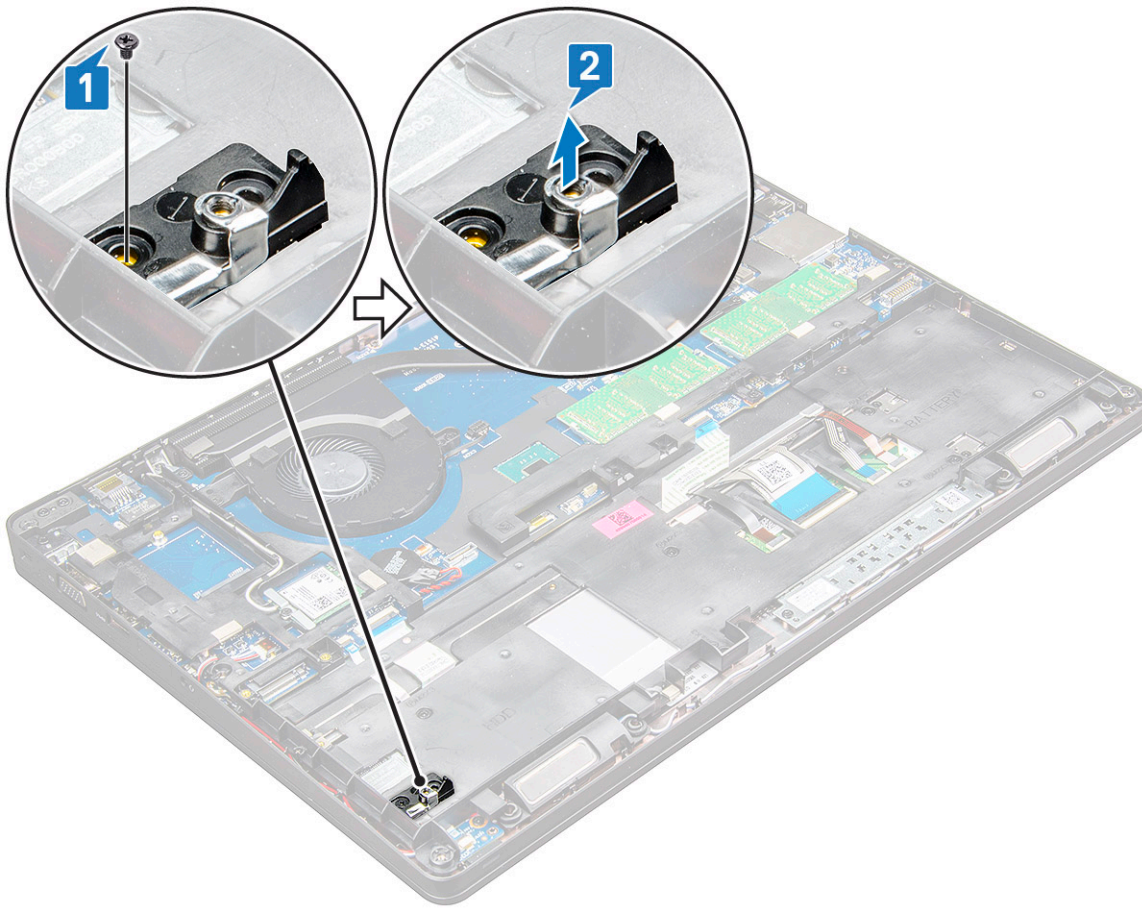
**NOTE:** System shipped with NVMe SSDs, the SSD do not require removal of mylar shield.

- b Remove the SSD screw (1) that secures the SSD card to the system board .
- c Lift and pull the SSD card from the laptop [3].

**NOTE:** For models shipped with NVMe SSDs, remove the thermal plate placed over the SSD.



- 4 To remove the SSD clip:
  - a Remove the M2.0x3.0 screw that secures the SSD clip to the laptop [1].
  - b Lift the SSD clip away from the laptop [2].



## Installing the M.2 Solid State Drive - SSD

**NOTE:** Before installing SSD card, ensure that the battery is fully charged or the power cable is plugged in.

- 1 Place the SSD clip on the laptop.
- 2 Tighten the M2.0x3.0 screw that secures SSD clip to the laptop.
- 3 Insert the SSD into the socket on the laptop.
- 4 Place the SSD bracket and tighten the M2.0x3.0 screw (2) to secure the SSD to the laptop.
- 5 Install the:
  - a battery
  - b base cover
- 6 Follow the procedure in [After working inside your computer](#).

## Hard drive

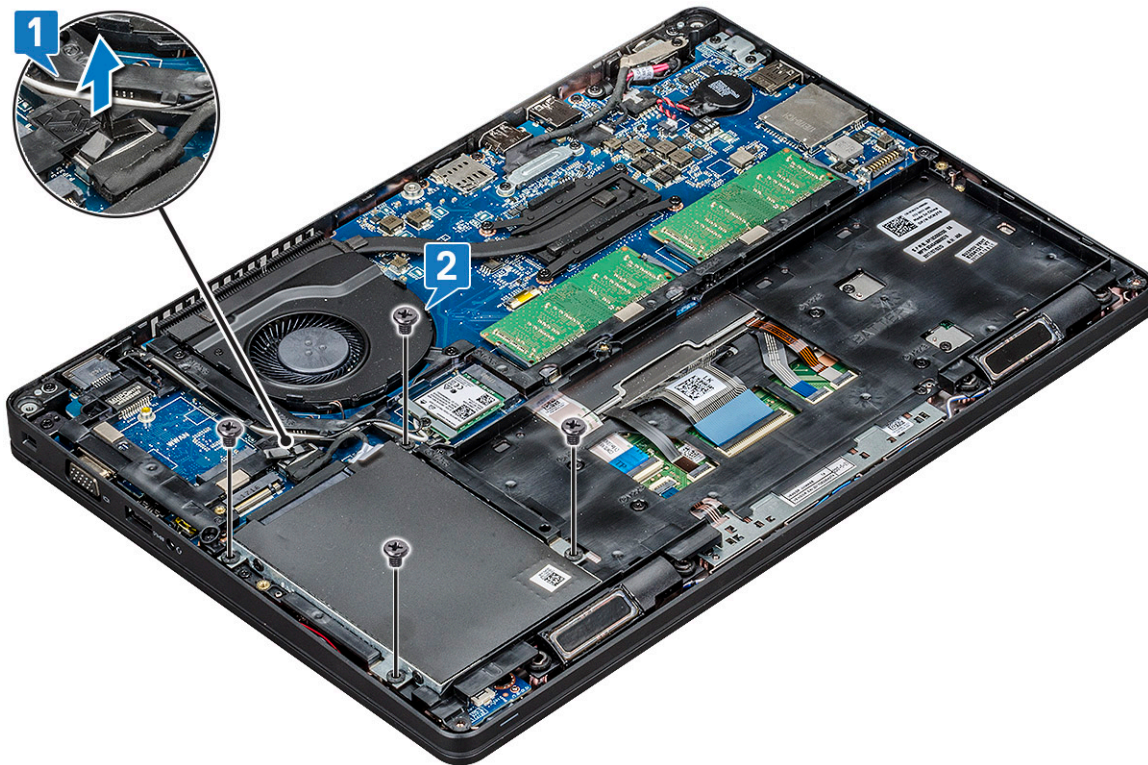
### Removing hard drive

- 1 Follow the procedure in [Before working inside your computer](#).
- 2 Remove the [base cover](#).
- 3 Do not remove the battery, instead disconnect the battery cable from the system board.
- 4 To remove the hard drive:
  - a Disconnect the hard drive cable from the connector on the system board [1].

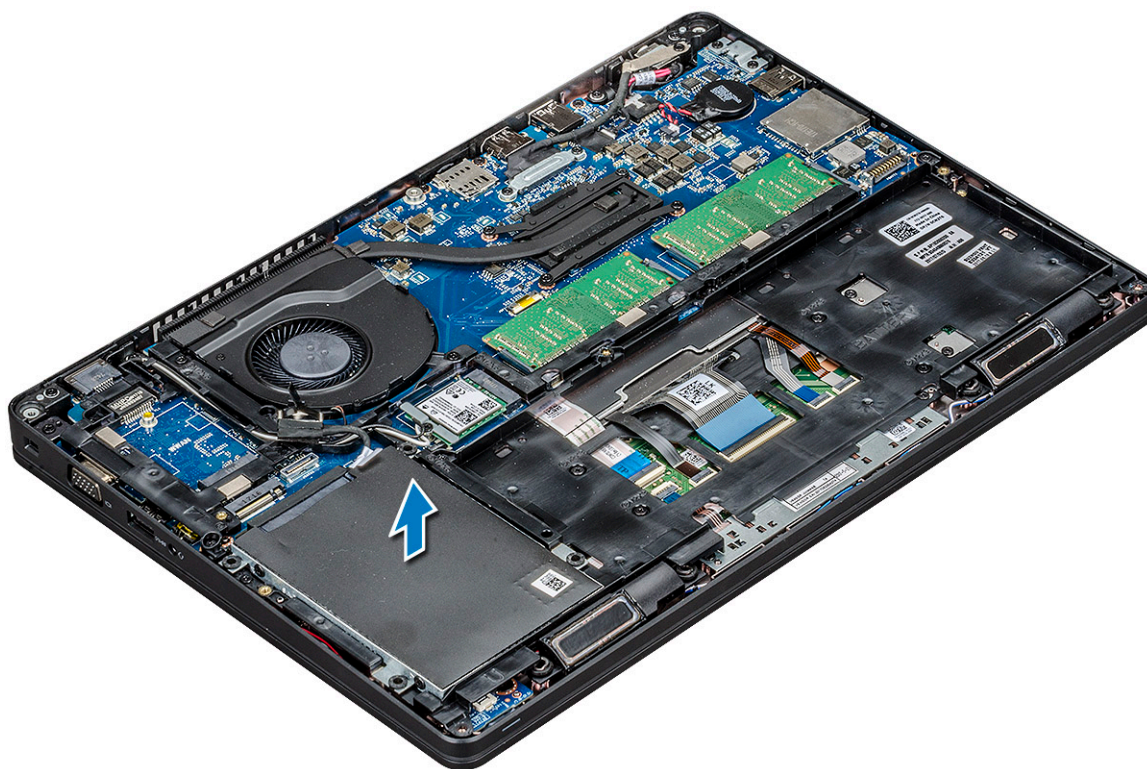


**NOTE:** The system default configuration is HDD. The laptop is either shipped with HDD or SSD.

- b Remove the M2 x 2.7+2.7 screws (4) that secure the hard drive to the system [2].



- 5 Lift the hard drive away from the system.



## Installing hard drive

- 1 Insert the hard drive into the slot on the system.
- 2 Replace the screws to secure the hard drive to the system.
- 3 Replace the hard drive cable.
- 4 Replace the screws to secure the hard drive assembly to the system.
- 5 Connect the hard drive cable to the connector on the system board.
- 6 If you have not removed the battery, you must connect the battery cable to the system board.
- 7 Install the [base cover](#).
- 8 Follow the procedures in [After working inside your system](#).

## WLAN card

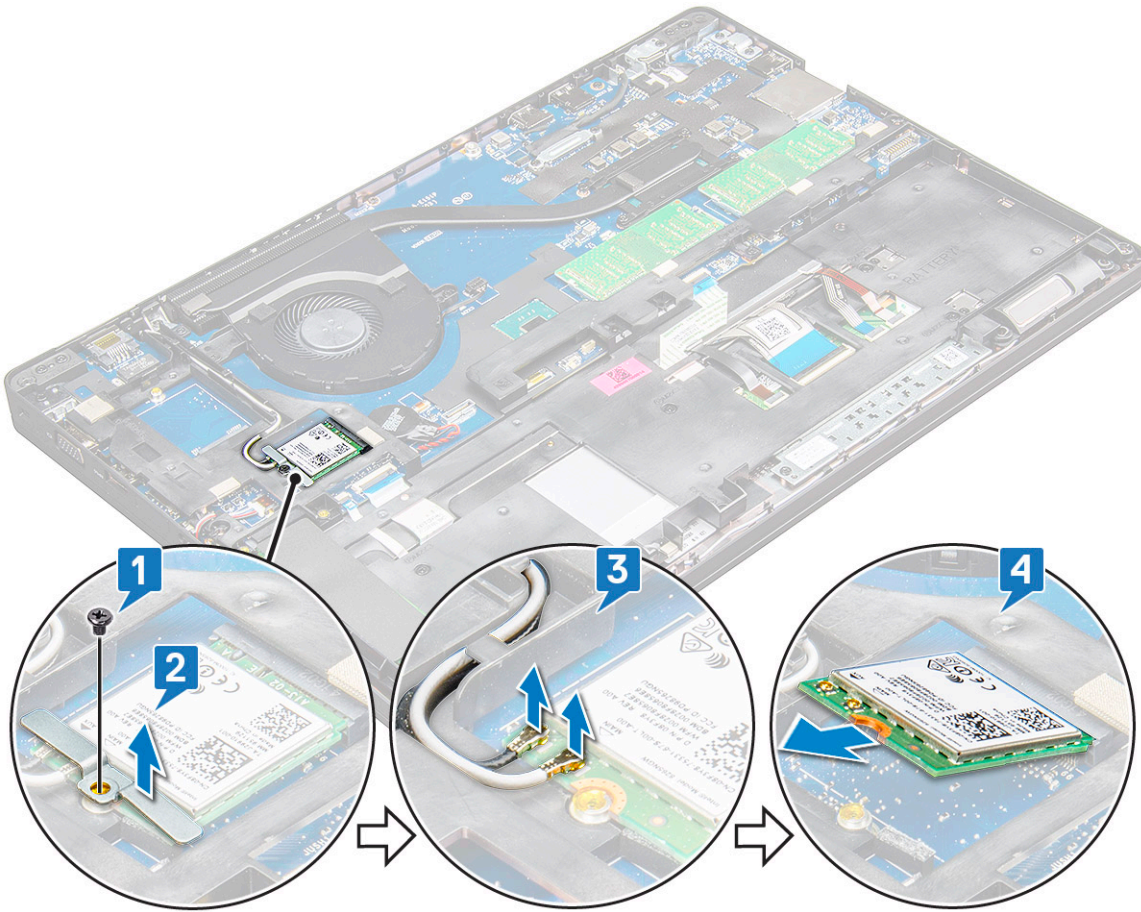
### Removing the WLAN card

- 1 Follow the procedure in [Before working inside your computer](#).
- 2 Remove the:
  - a [base cover](#)
  - b [battery](#)
- 3 To remove the WLAN card:
  - a Remove the M2.0x3.0 screw (1) that secures the WLAN card to the laptop [1].
  - b Lift the metal bracket that secures the WLAN cables to the WLAN card [2].
  - c Disconnect the WLAN cables from the connectors on the WLAN card [3].

**NOTE:** The WLAN card is held in place with an adhesive foam spacer.

  - d Pull the WLAN card to release it from the connector on the system board[4].

**NOTE:** Ensure NOT to pull the WLAN card more than 35°, to avoid pin damage.



## Installing the WLAN card

- 1 Insert the WLAN card into the slot on the laptop.
- 2 Route the WLAN cables through the routing channel.
- 3 Connect the WLAN cables to the connectors on the WLAN Card.
- 4 Place the metal bracket and tighten the M2.0x3.0 screw to secure the WLAN card to the system board.
- 5 Install the:
  - a [battery](#)
  - b [base cover](#)
- 6 Follow the procedure in [After working inside your system](#).

## WWAN card

### Removing WWAN card

- 1 Follow the procedure in [Before working inside your computer](#).
- 2 Remove the:
  - a [base cover](#)
  - b [battery](#)
- 3 To remove the WWAN card:
  - a Remove the M2.0 x 3.0 screw (1) that secures the metal bracket to the WWAN card [1].

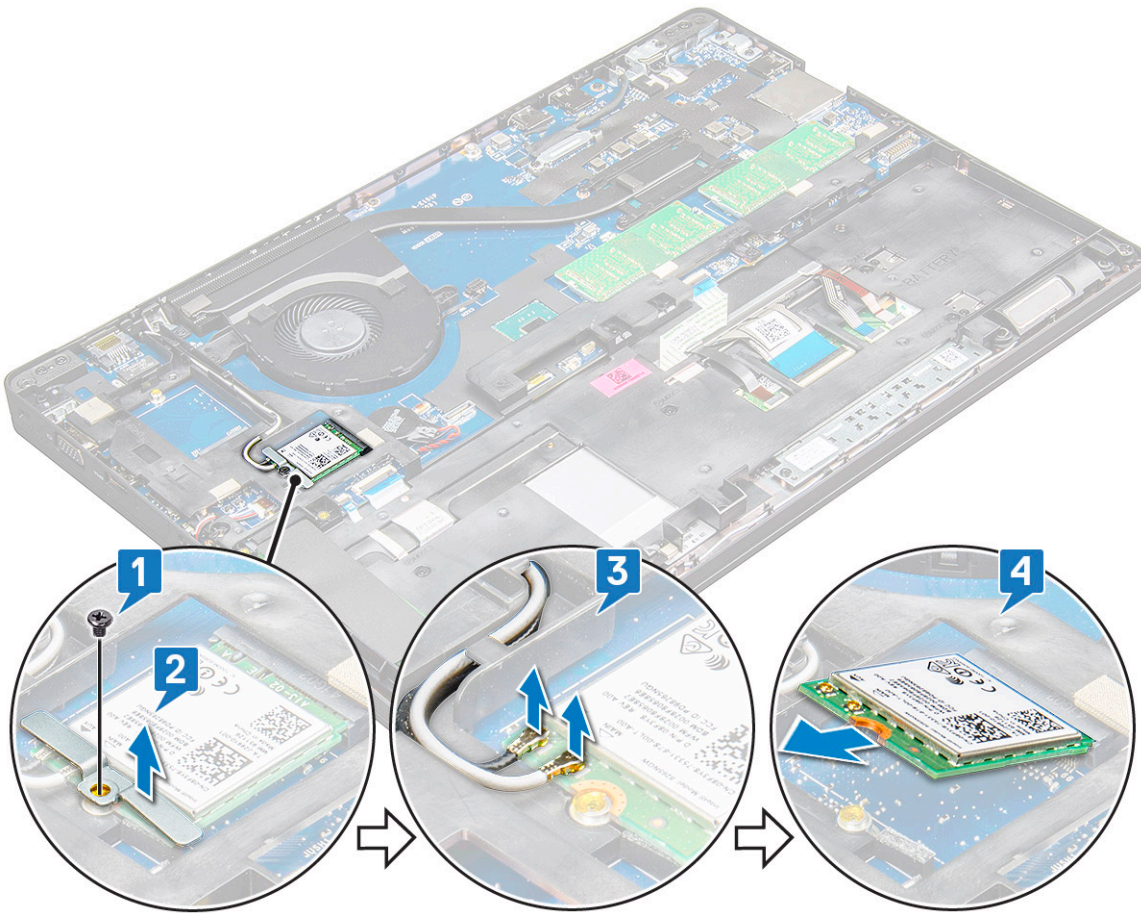
① **NOTE:** Do not pull the WWAN card more than 35°, to avoid pin damage.

- b Lift the metal bracket that secures the WWAN card to the system board [2].
- c Disconnect the WWAN cables from the connectors on the WWAN card with a plastic scribe.[3].

① **NOTE:** Do press the WWAN card, and then release the cables from the connectors.

- d Pull the WWAN card to release it from the connector on the system board [4].

① **NOTE:** Do not lift the WWAN card by an angle more than 35°.



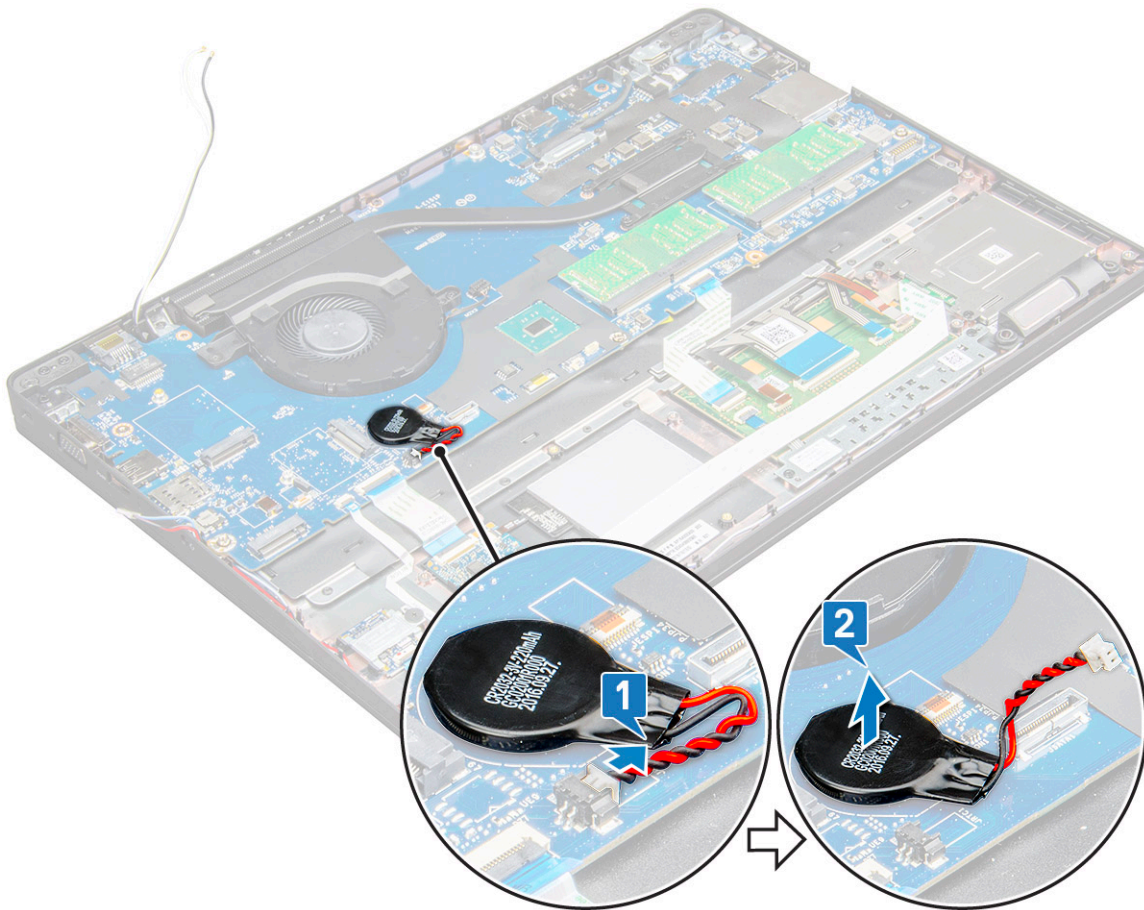
## Installing the WWAN card

- 1 Insert the WWAN card into the slot on the laptop.
- 2 Connect the WWAN cables to the connectors on the WWAN card.
- 3 Place the metal bracket and tighten the M2.0 x 3.0 screw to secure it to the laptop.
- 4 Install the:
  - a [battery](#)
  - b [base cover](#)
- 5 Follow the procedure in [After working inside your system](#).

# Coin cell battery

## Removing the coin cell battery

- 1 Follow the procedure in [Before working inside your computer](#).
- 2 Remove the:
  - a [base cover](#)
  - b [battery](#)
- 3 To remove the coin cell battery:
  - a Disconnect the coin cell battery cable from the connector on the system board [1].
  - b Pry the coin cell battery to release from the adhesive and lift it away from the system board [2].



## Installing the coin cell battery

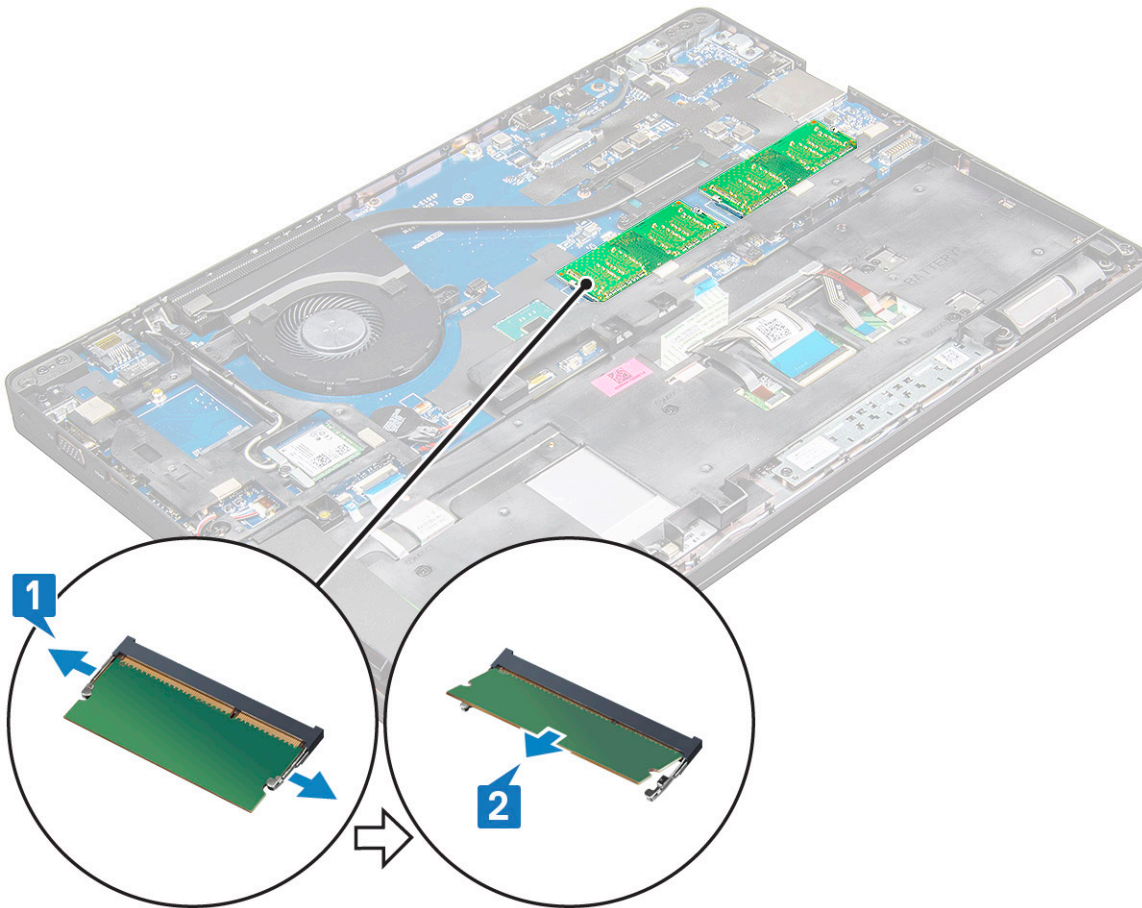
- 1 Place the coin cell battery on the system board.
- 2 Connect the coin cell battery cable to the connector on the system board.  
**NOTE:** Route the coin cell battery cable carefully to avoid damaging the cable.
- 3 Install the:
  - a [battery](#)
  - b [base cover](#)
- 4 Follow the procedure in [After working inside your computer](#).



# Memory modules

## Removing the memory module

- 1 Follow the procedure in [Before working inside your computer](#).
- 2 Remove the:
  - a [base cover](#)
  - b [battery](#)
- 3 To remove the memory module:
  - a Press the clips securing the memory module until the memory pops-up [1].
  - b Pull the memory module from the connector on the system board [2].



## Installing the memory module

- 1 Insert the memory module into the memory module socket until the clips secure the memory module.

**NOTE:** Ensure to insert the memory module at an angle NOT more than 30°. Press the memory module down to engage the retaining clips.

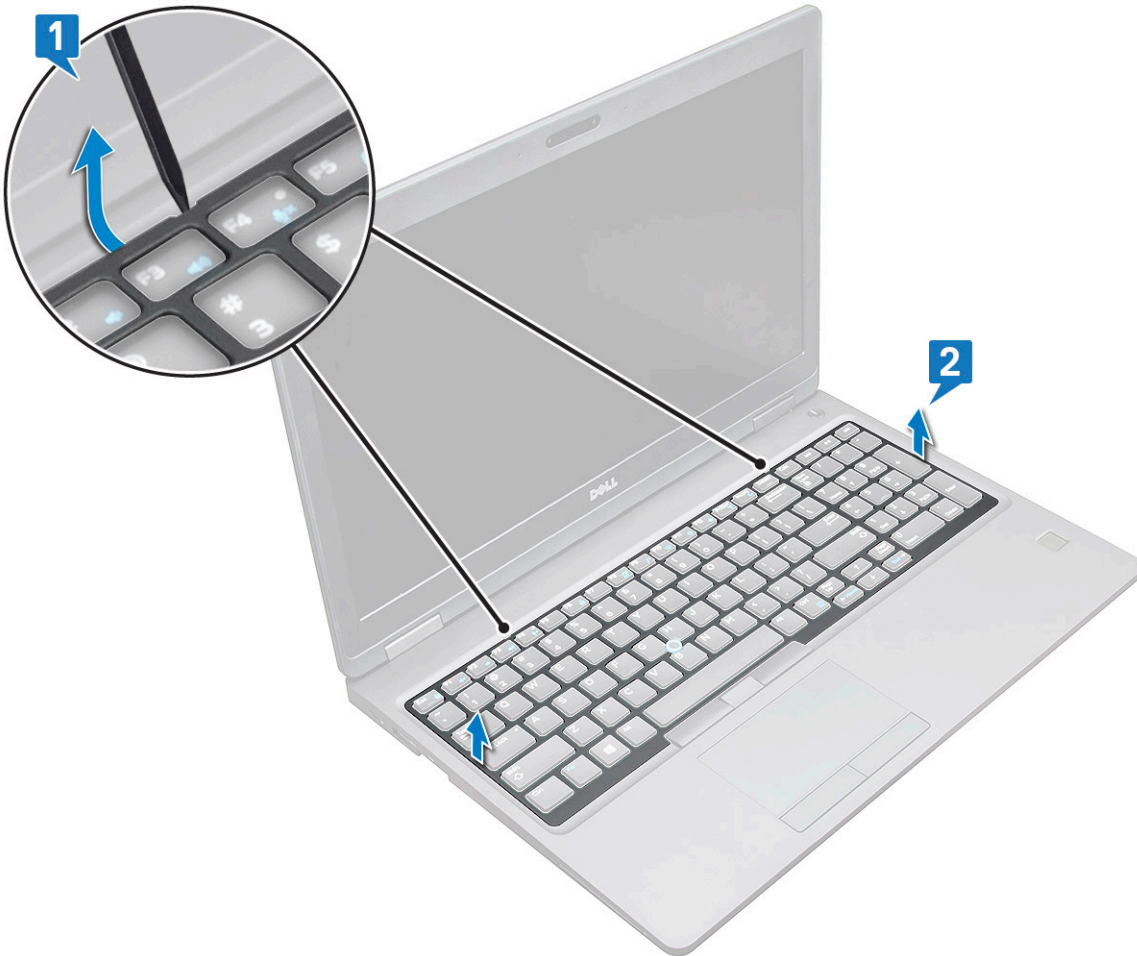
- 2 Install the:
  - a [battery](#)
  - b [base cover](#)
- 3 Follow the procedures in [After working inside your computer](#).

# Keyboard

## Removing keyboard lattice

- 1 Follow the procedure in [Before working inside your computer](#).
- 2 Pry the keyboard lattice from the edges [1] and lift the lattice away from the system [2].

**NOTE:** Gently pull or lift keyboard lattice in clockwise or anticlockwise direction to avoid breakage.



**NOTE:** Do use a plastic scribe to pry the keyboard trim from the edges.

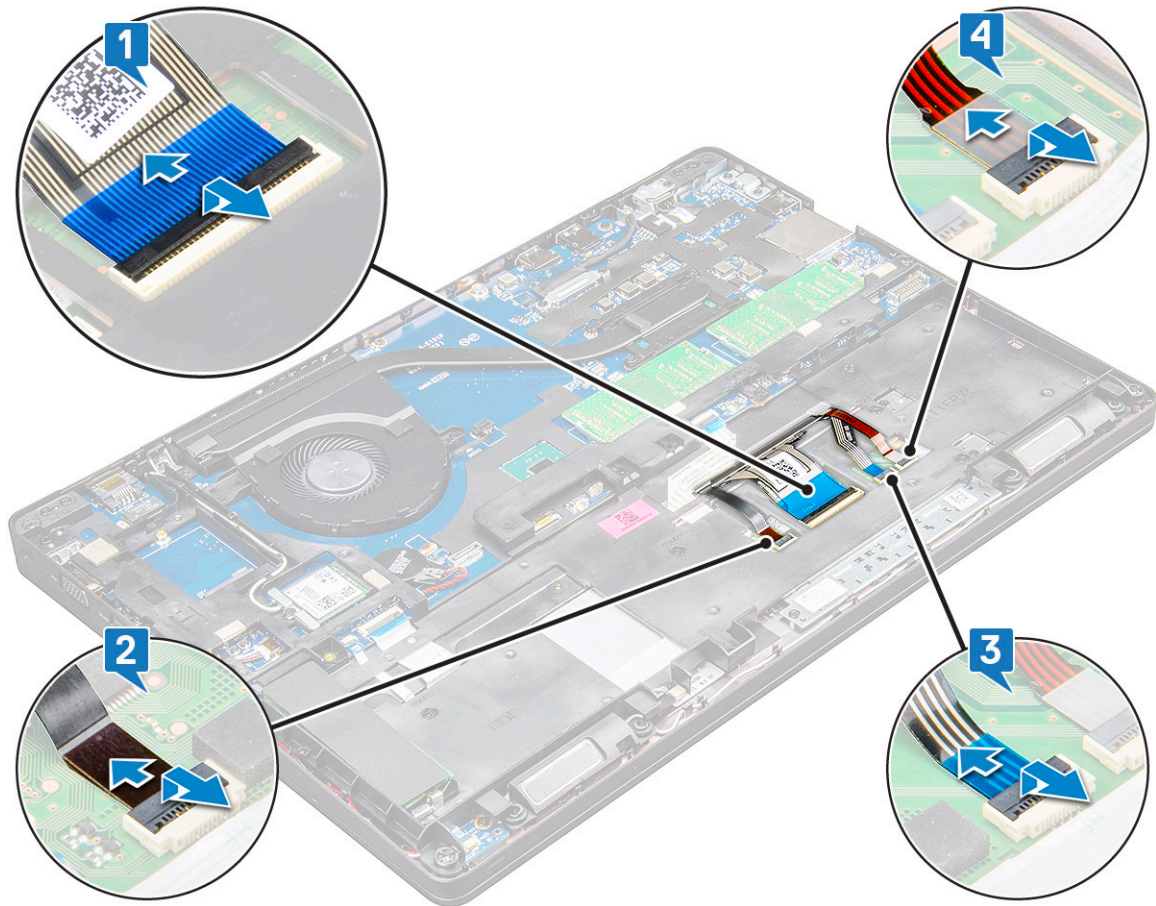
## Removing the keyboard

- 1 Follow the procedure in [Before working inside your computer](#).
- 2 Remove the:
  - a base cover
  - b battery
  - c keyboard lattice
- 3 To remove the keyboard:
  - a Lift the latch and disconnect the keyboard cable from the connector on the system [1].



b Lift the latch and disconnect the keyboard backlight cable from the connector on the system [2].

**NOTE:** Number of cables to disconnect is based on the keyboard type.



c Lift the latch and disconnect the cable from the connector on the system board [3].

d Lift the latch and disconnect the cable from the connector on the system board [4].

e Turn over the system and open the laptop in working mode.

f Remove the M2 x 2 (6) screws that secure the keyboard to the system [1].

g Pry the keyboard from the bottom side and lift it away from the system [2] along with the keyboard cable and the keyboard back light cable.

**WARNING:** Gently pull the keyboard cable and the keyboard back light cable routed under the system to avoid damage to the cables.





## Installing the keyboard


- 1 Hold the keyboard and route the keyboard cable and the keyboard backlight cable through the palmrest in the system.
- 2 Align the keyboard with the screw holders on the system.
- 3 Replace the M2\*2 screws (6) to secure the keyboard to the system.
- 4 Turn the system and connect the keyboard cable and the keyboard backlight cable to the connector in the system.
- 5 If you have not removed the battery, you must connect the battery cable to the system board.
- 6 Install the:
  - a keyboard lattice
  - b battery
  - c base cover
- 7 Follow the procedure in [After working inside your computer](#).

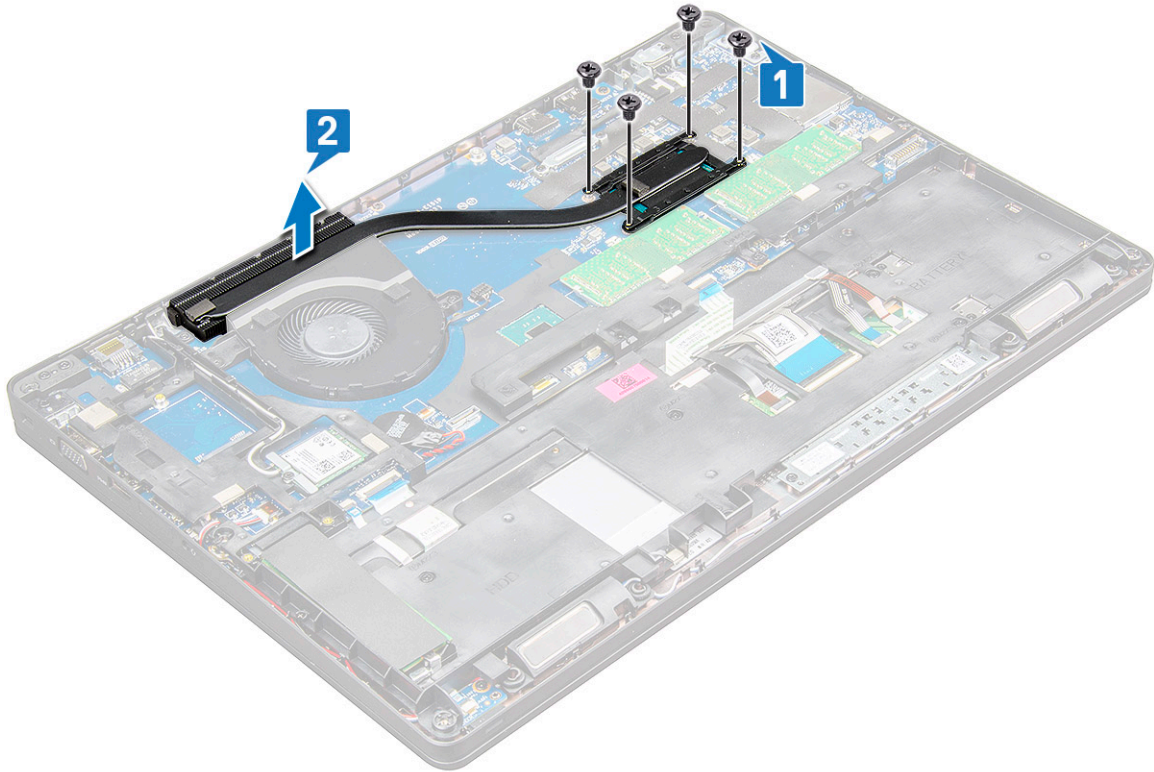
## Installing the keyboard trim

- 1 Align the keyboard trim with the tabs on the computer and press the keyboard until the keyboard clicks into place.
- 2 Follow the procedure in [After working inside your system](#).

## Heat sink

### Removing the heat sink

- 1 Follow the procedure in [Before working inside your computer](#).
- 2 Remove the:
  - a base cover
  - b battery
- 3 To remove the heat sink :
  - a Remove the M2.0x3.0 screws (4) that secures the heat sink to the system board [1].  
 **NOTE: Remove the screws that secure the heat sink sink .**
  - b Lift the heat sink away from the system board [2].



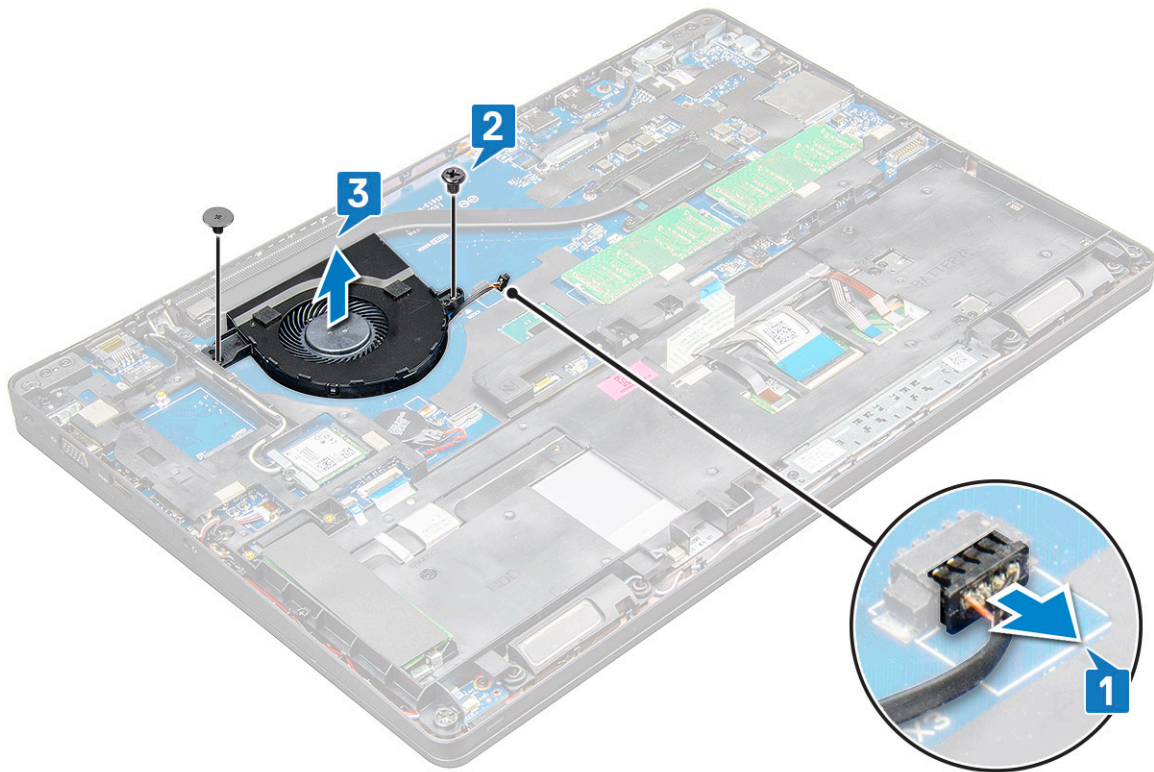
## Installing the heat sink

- 1 Place the heat sink on the system board and align the heat sink with the screw holders.
- 2 Tighten the M2.0x3.0 screws (2) to secure the heat sink to the system board.
- 3 Connect the heat sink to the connector on the system board.
- 4 Install the:
  - a battery
  - b base cover
- 5 Follow the procedure in [After working inside your computer](#).

## System fan

### Removing the system fan

- 1 Follow the procedure in [Before working inside your computer](#).
- 2 Remove the:
  - a base cover
  - b battery
- 3 To remove the system fan:
  - a Disconnect the system fan cable from the connector on the system board [1].
  - b Remove the M2.0x3.0 screws (2) that secures the system fan to the system board [2]
  - c Lift the system fan away from the system board [3].



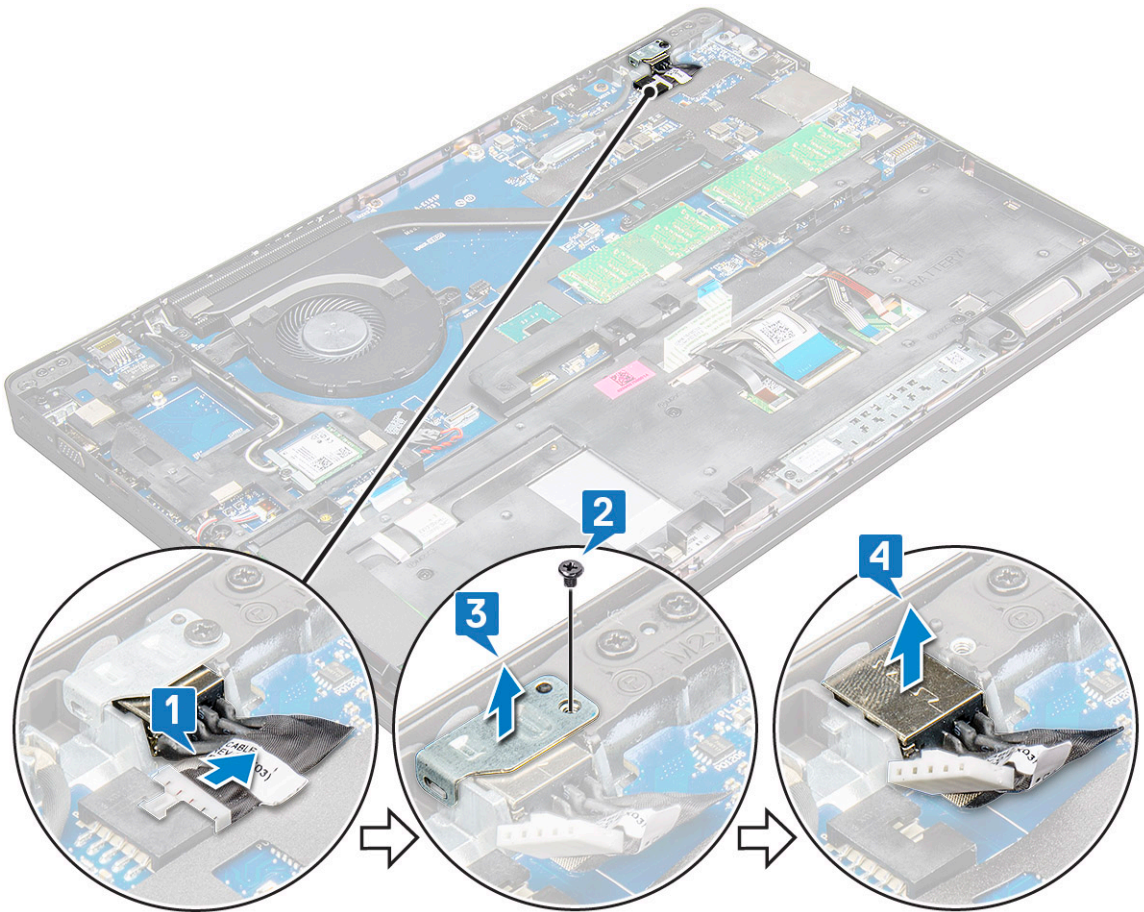
## Installing the system fan

- 1 Place the system fan on the system board and align the system fan on the screw holders.
- 2 Tighten the M2.0x3.0 screws to secure the heat sink to the system board.
- 3 Connect the fan cable to the connector on the system board.
- 4 Install the:
  - a [battery](#)
  - b [base cover](#)
- 5 Follow the procedure in [After working inside your computer](#).

## Power connector port

### Removing the power connector port

- 1 Follow the procedure in [Before working inside your computer](#).
- 2 Remove the:
  - a [base cover](#)
  - b [battery](#)
- 3 To remove the power connector port:
  - a Disconnect the power connector port cable from the connector on the system board [1].  
**ⓘ | NOTE: Use a plastic scribe to release the cable from the connector. Do not pull the cable as it may result in breakage.**
  - b Remove the M2.0x3.0 screw to release the metal bracket that secures the power connector port [2].
  - c Remove the metal bracket that secures the power connector port [3].
  - d Lift the power connector port away from the laptop [4].



## Installing the power connector port

- 1 Insert the power connector port into the slot on the laptop.
- 2 Place the metal bracket on the power connector port.
- 3 Tighten the M2.0x3.0 screw to secure the metal bracket to the power connector port on the laptop.
- 4 Connect the power connector port cable to the connector on the system board.
- 5 Install the:
  - a battery
  - b base cover
- 6 Follow the procedure in [After working inside your computer](#).

## Chassis frame

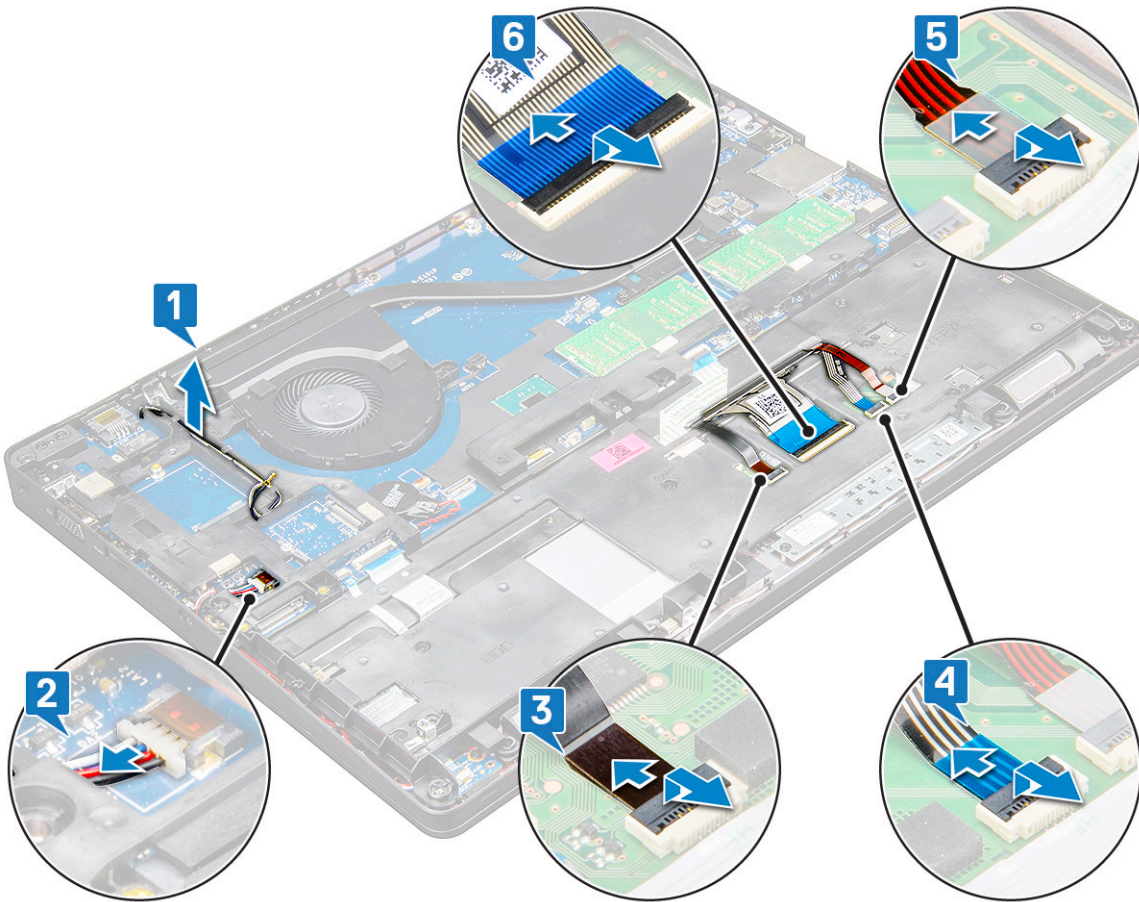
### Removing the chassis frame

- 1 Follow the procedure in [Before working inside your computer](#).
- 2 Remove the:
  - a SIM card module
  - b base cover
  - c battery
  - d WLAN card
  - e WWAN card

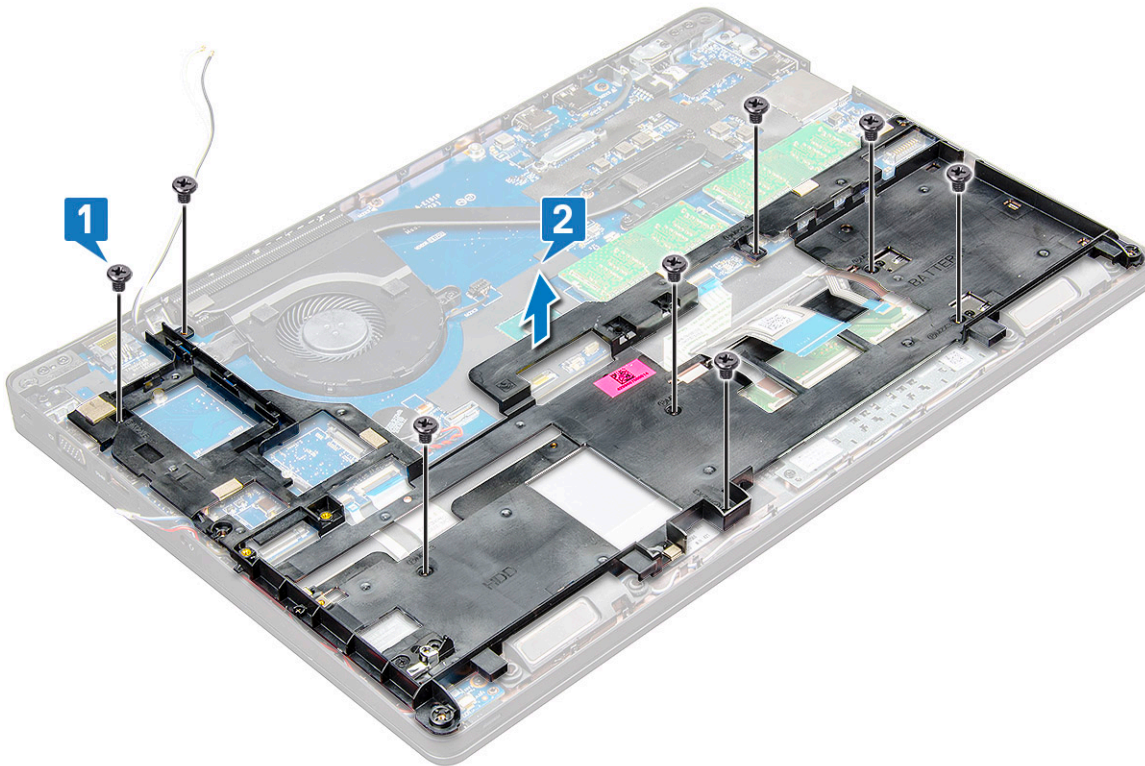


f SSD card

- 3 To release the chassis frame:
  - a Release the WLAN and WWAN cables from the routing channels [1].
  - b Disconnect the speaker cable from the connector on the system board [2].
  - c Lift the latch to disconnect the keyboard cable[3], touchpad cable[4], pointstick cable[5] and backlight cable (optional) [6] from the connector on the system board.



- 4 To remove the chassis frame:
  - a Remove the M2.0x3.0, M2x5 screws (8) that secure the chassis frame to the laptop[1].
  - b Lift the chassis frame away from the laptop [2].



## Installing the chassis frame

- 1 Place the chassis frame on the computer and tighten the screws (M2x5, M2.0x3.0).

**NOTE:** When reinstalling the chassis frame ensure the keyboard cables are NOT under the frame, but run through the opening in the frame.

- 2 Connect the speaker, keyboard cable, touchpad cable, pointstick cable and backlight cable(optional).
- 3 Route the WLAN and WWAN cable.

**NOTE:** Ensure the coin cell battery cable is properly routed in between the chassis frame and the system board to avoid damages to the cable.

- 4 Install the:
  - a SSD card
  - b WWAN card
  - c WLAN card
  - d battery
  - e base cover
  - f SIM card module
- 5 Follow the procedure in [After working inside your system](#).

## System board

### Removing the system board

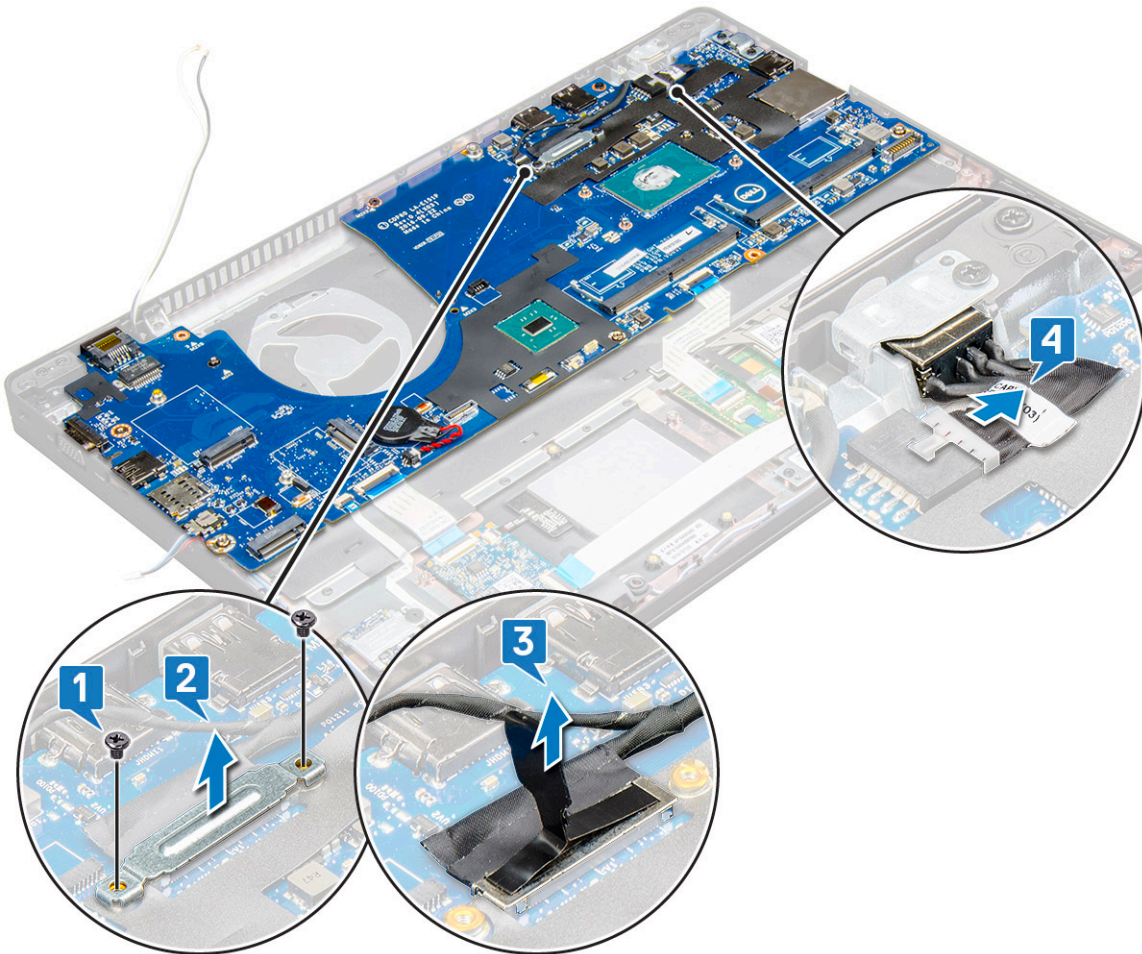
- 1 Follow the procedure in [Before working inside your computer](#).
- 2 Remove the:



- a SIM card module
- b base cover
- c battery
- d WLAN card
- e WWAN card
- f SSD card or hard drive
- g memory module
- h heat sink
- i coin cell battery
- j Power connector port
- k chassis frame

3 To release the system board:

- a Remove the M2.0x3.0 screws that secures the metal bracket to the system board [1].
- b Lift the metal bracket that secures the display cable to the system board [ 2].
- c Disconnect the display cable from the connectors on the system board [3].
- d Disconnect the power cable [4].

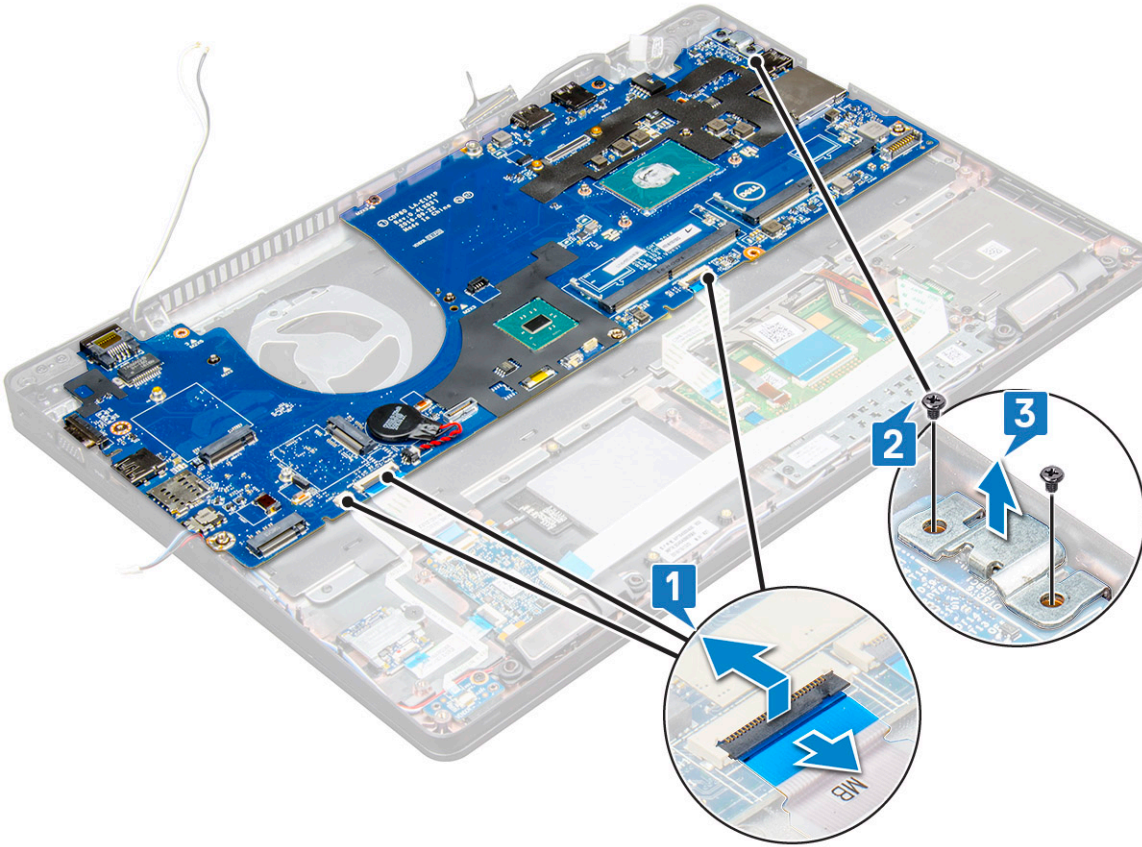


4 To remove the system board:

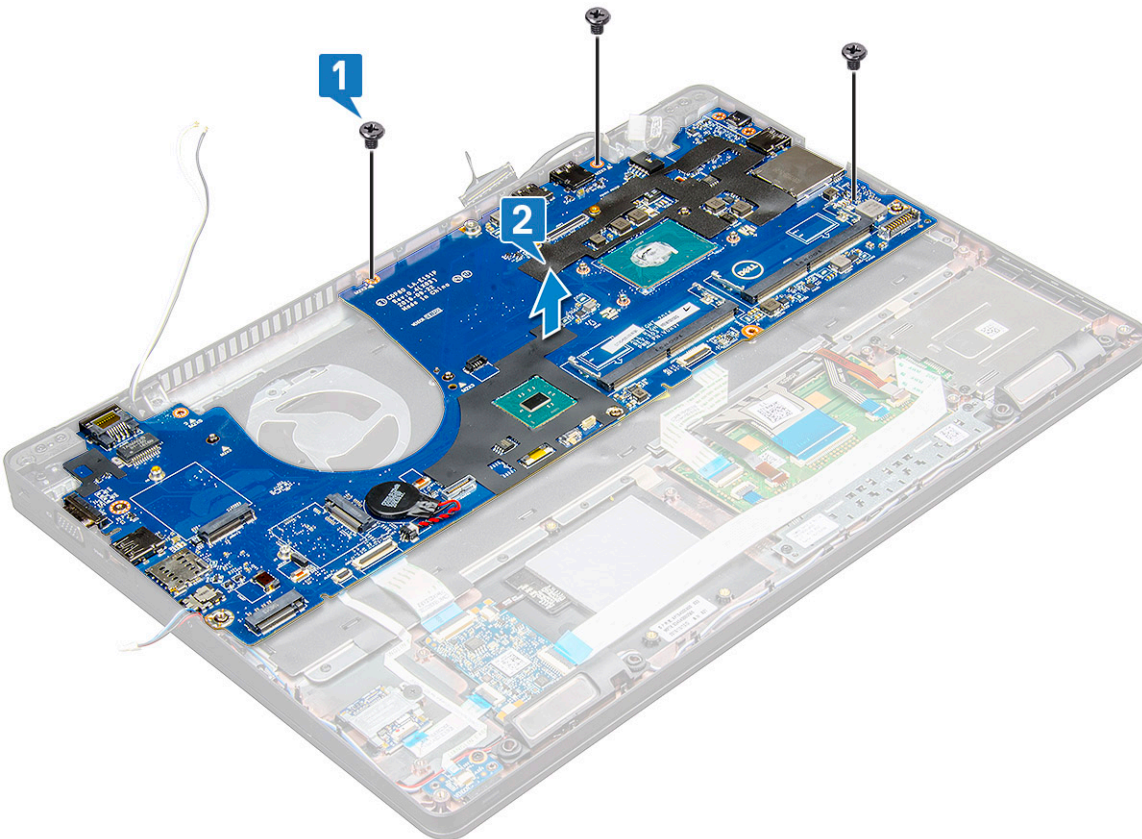
- a Disconnect the LED board, mother board and touchpad cable from the connectors on the system board [1].
- b Remove the M2.0x5.0 screws (2) that secure the metal bracket to the system board and lift the bracket away from the system board [2,3].

**NOTE:** The metal bracket referred is the USB-C port bracket.





5 Remove the M2.0x3.0 screws (3) and lift the system board away from the computer [1, 2].



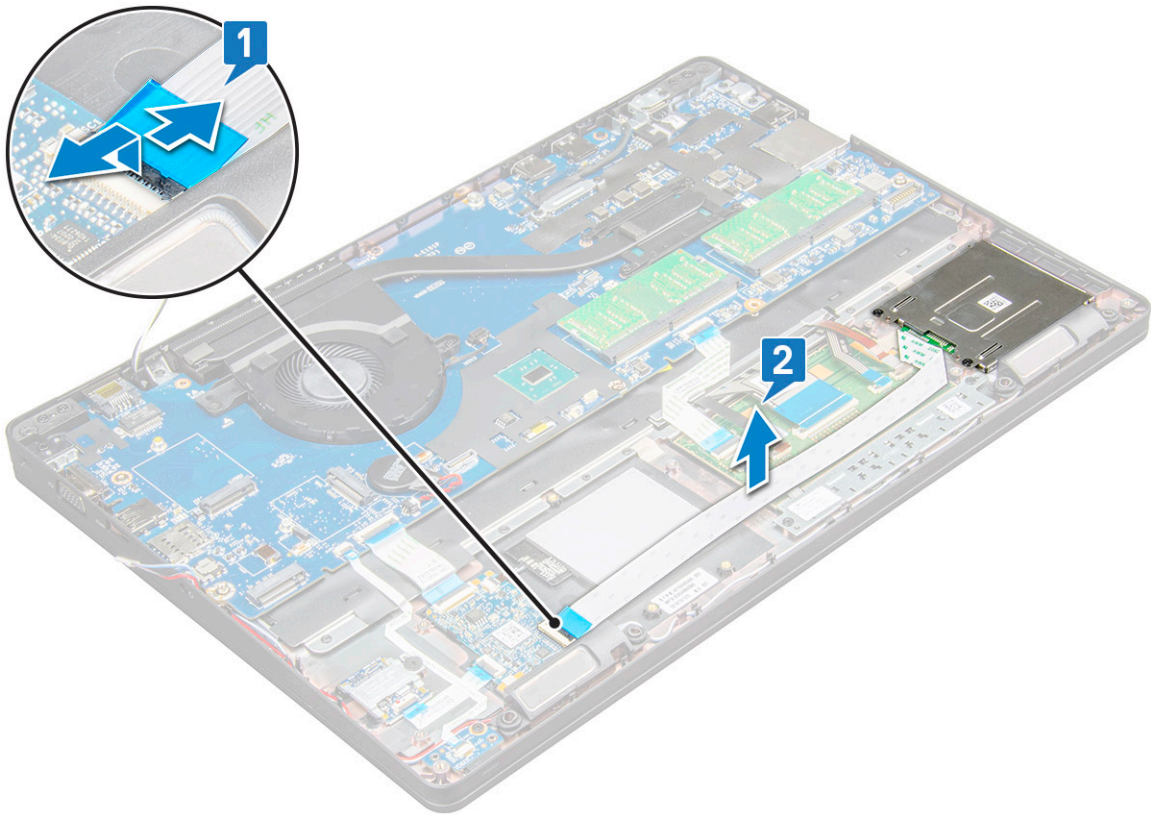
## Installing the system board

- 1 Align the system board with the screw holders on the laptop.
- 2 Tighten the M2.0x3.0 screws to secure the system board to the laptop.
- 3 Place the metal bracket and tighten the M2.0x5.0 screws on the system board.  
**i** | **NOTE: The metal bracket referred is the USB-C bracket.**
- 4 Connect the LED, mother board and touchpad cable to the system board.
- 5 Connect the power cable.
- 6 Connect the display cable on the system board.
- 7 Place the eDP cable and metal bracket to system board and tighten the M2.0x3.0 screws to secure to the system board.
- 8 Install the:
  - a chassis frame
  - b coin cell battery
  - c heat sink
  - d memory module
  - e SSD card or hard drive
  - f WWAN
  - g WLAN card
  - h battery
  - i base cover
  - j SIM card module
- 9 Follow the procedure in [After working inside your computer](#).

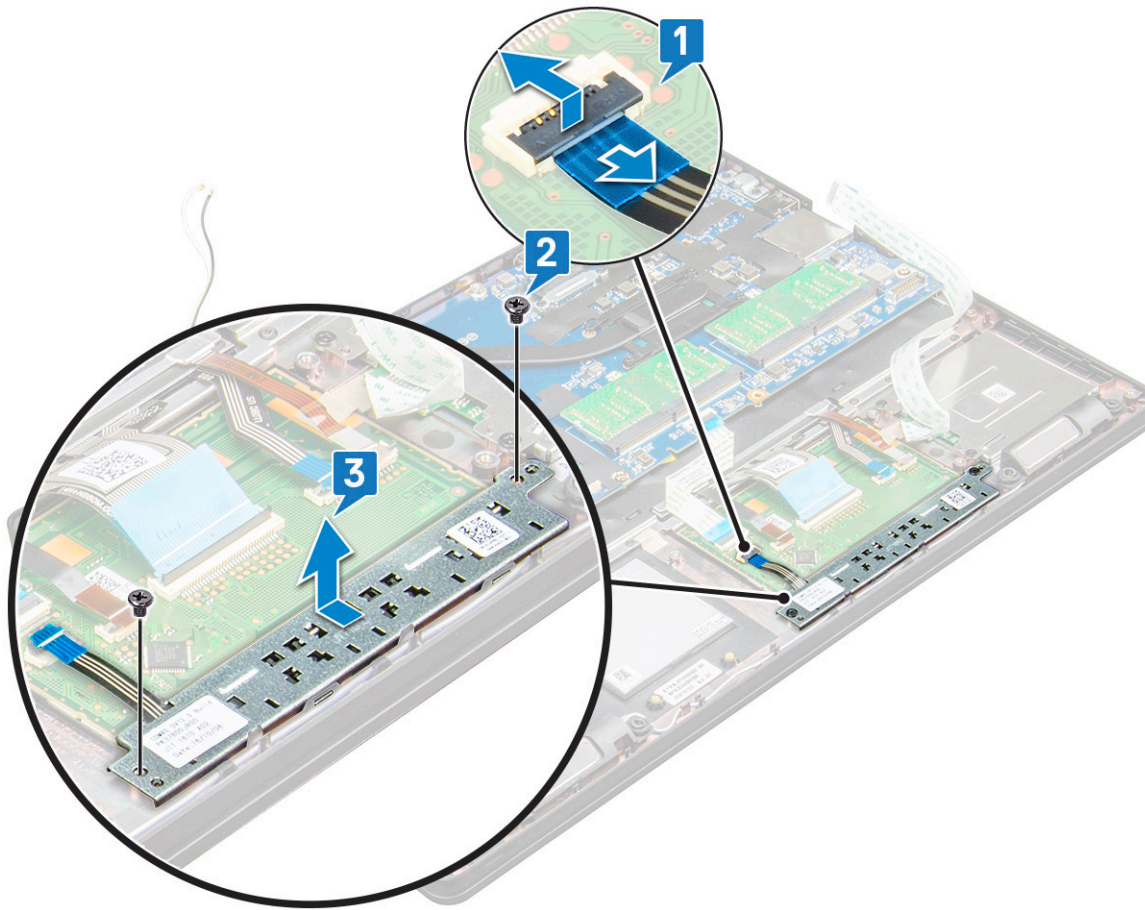
## Touchpad buttons board

### Removing the touchpad buttons

- 1 Follow the procedure in [Before working inside your computer](#).
- 2 Remove the:
  - a base cover
  - b battery
  - c WLAN card
  - d WWAN
  - e SSD card or hard drive
  - f chassis frame
- 3 To release the touchpad panel:
  - a Lift the latch and disconnect the SmartCard reader cable from the connector on the system board [1].
  - b Peel off the SmartCard reader cable from the adhesive [2].



- 4 To remove the touchpad panel:
  - a Lift the latch and disconnect the touchpad panel cable from the connector on the system board [1].
  - b Remove the M2.0x3.0 screws (2) that secure the touchpad panel to the laptop [2].
  - c Lift the touchpad panel away from the laptop [3].



## Installing the touchpad panel

- 1 Place the touchpad panel into the slot on the system board.
- 2 Tighten the M2.0x3.0 screws to secure the touchpad panel.
- 3 Connect the touchpad cable.
- 4 Connect the SmartCard reader cable to the laptop.
- 5 Install the:
  - a chassis frame
  - b SSD card or hard drive
  - c WWAN
  - d WLAN card
  - e battery
  - f base cover
- 6 Follow the procedure in [After working inside your computer](#).

## SmartCard module

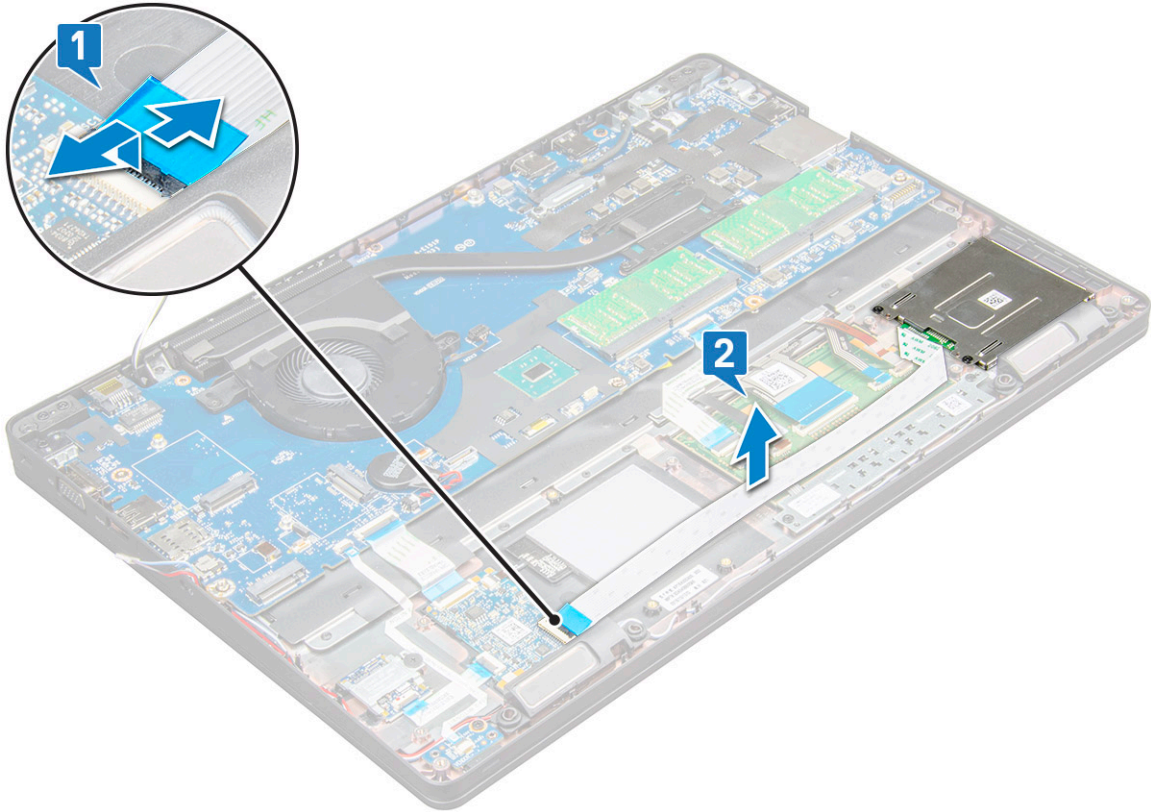
### Removing the SmartCard reader

- 1 Follow the procedure in [Before working inside your computer](#).
- 2 Remove the:
  - a base cover

- b battery
- c WLAN card
- d WWAN
- e SSD card or hard drive
- f chassis frame

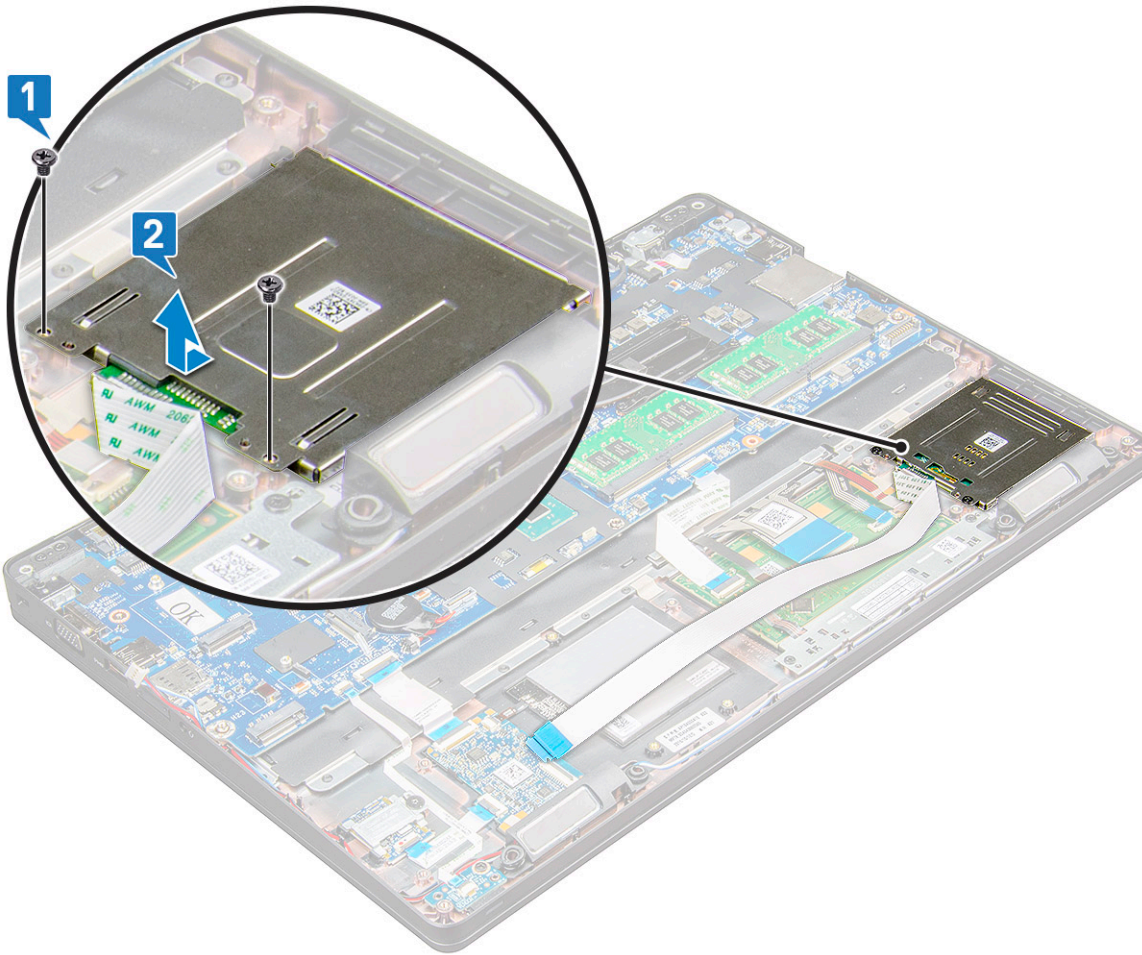
3 To release the SmartCard reader:

- a Disconnect the SmartCard reader board cable from the connector on the system board [1].
- b Peel off the cable to release from the adhesive [2].



4 To remove the SmartCard reader:

- a Remove the M2.0x3.0 screws (2) that secure the SmartCard reader board to the palmrest [1].
- b Pull the SmartCard reader board to release on the system board [2].



## Installing the SmartCard reader

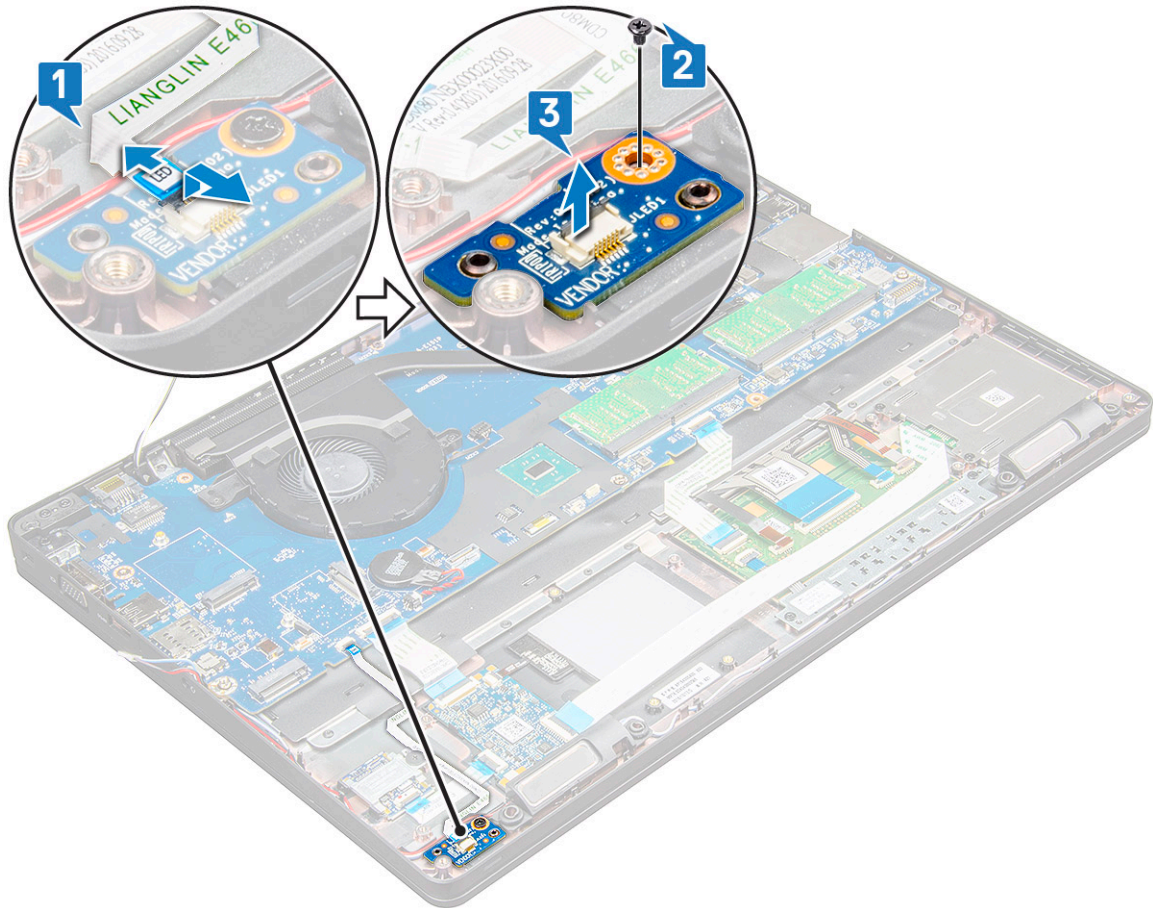
- 1 Place the SmartCard reader on the laptop.
- 2 Tighten the M2.0x3.0 screws to secure the SmartCard reader to the laptop.
- 3 Affix the SmartCard reader cable and connect the cable to the connector on the system board.
- 4 Install the:
  - a chassis frame
  - b SSD card or hard drive
  - c WWAN
  - d WLAN card
  - e battery
  - f base cover
- 5 Follow the procedure in [After working inside your computer](#).

## LED board

### Removing the LED board

- 1 Follow the procedure in [Before working inside your computer](#).
- 2 Remove the:

- a base cover
  - b battery
  - c WLAN card
  - d WWAN
  - e SSD card or hard drive
  - f chassis frame
- 3 To remove the LED board:
- a Lift the latch and disconnect the LED board cable from the connector on the LED board [1].
  - b Remove the M2.0x3.0 screw that secures the LED board to the laptop [2].
  - c Lift the LED board away from the laptop [3].



## Installing the LED board

- 1 Place the LED board on the laptop.
- 2 Tighten the M2.0x3.0 screw to secure the LED board to the laptop.
- 3 Connect the LED board cable to the connector on the LED board.
- 4 Install the:
  - a chassis frame
  - b SSD card or hard drive
  - c WWAN
  - d WLAN card
  - e battery
  - f base cover
- 5 Follow the procedure in [After working inside your computer](#).



# Speaker

## Removing the speaker

1 Follow the procedure in [Before working inside your computer](#).

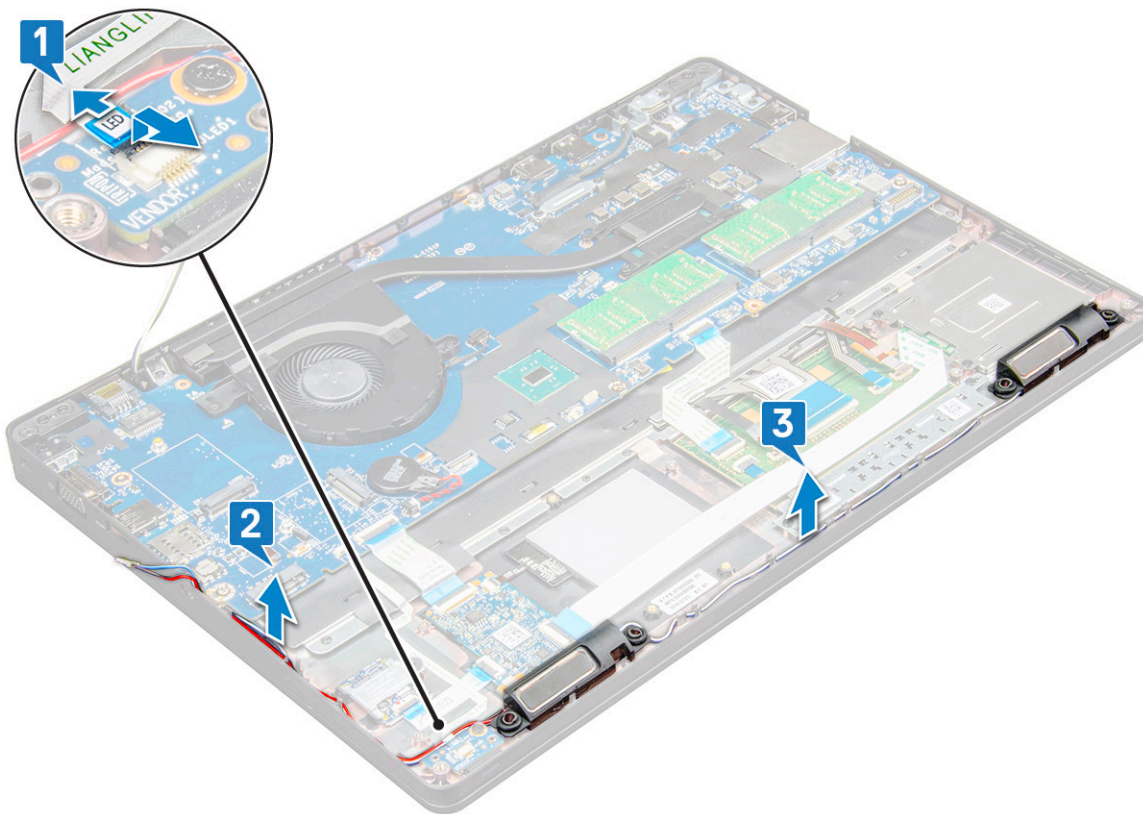
2 Remove the:

- a base cover
- b battery
- c WLAN card
- d WWAN
- e SSD card or hard drive
- f chassis frame

3 To disconnect the cables:

**NOTE:** Speaker cables are disconnected to remove the chassis frame.

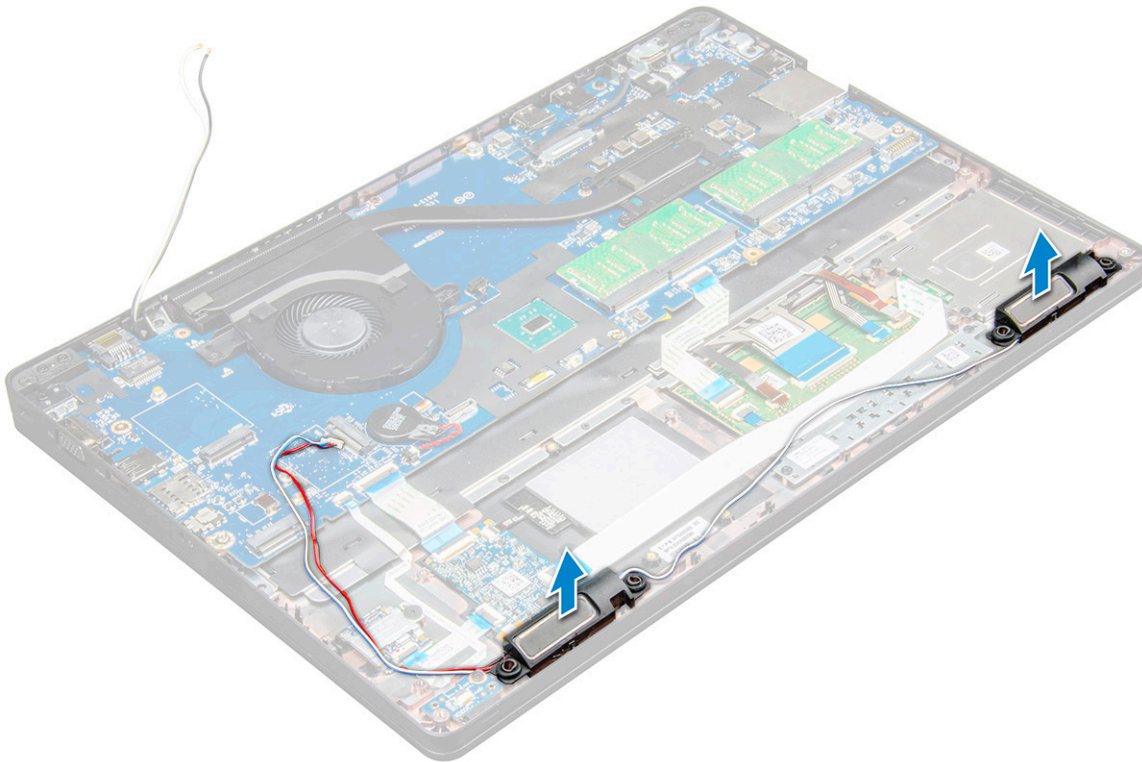
- a Lift the latch and disconnect the LED board cable [1].
- b Disconnect and unrout the speaker cable [2].
- c Remove the speaker cable from the routing clips [3].



4 Lift the speakers from the laptop.

**NOTE:** Speaker are fixed to the laptop in the speaker holder, lift the speaker gently to avoid damage to the holders.





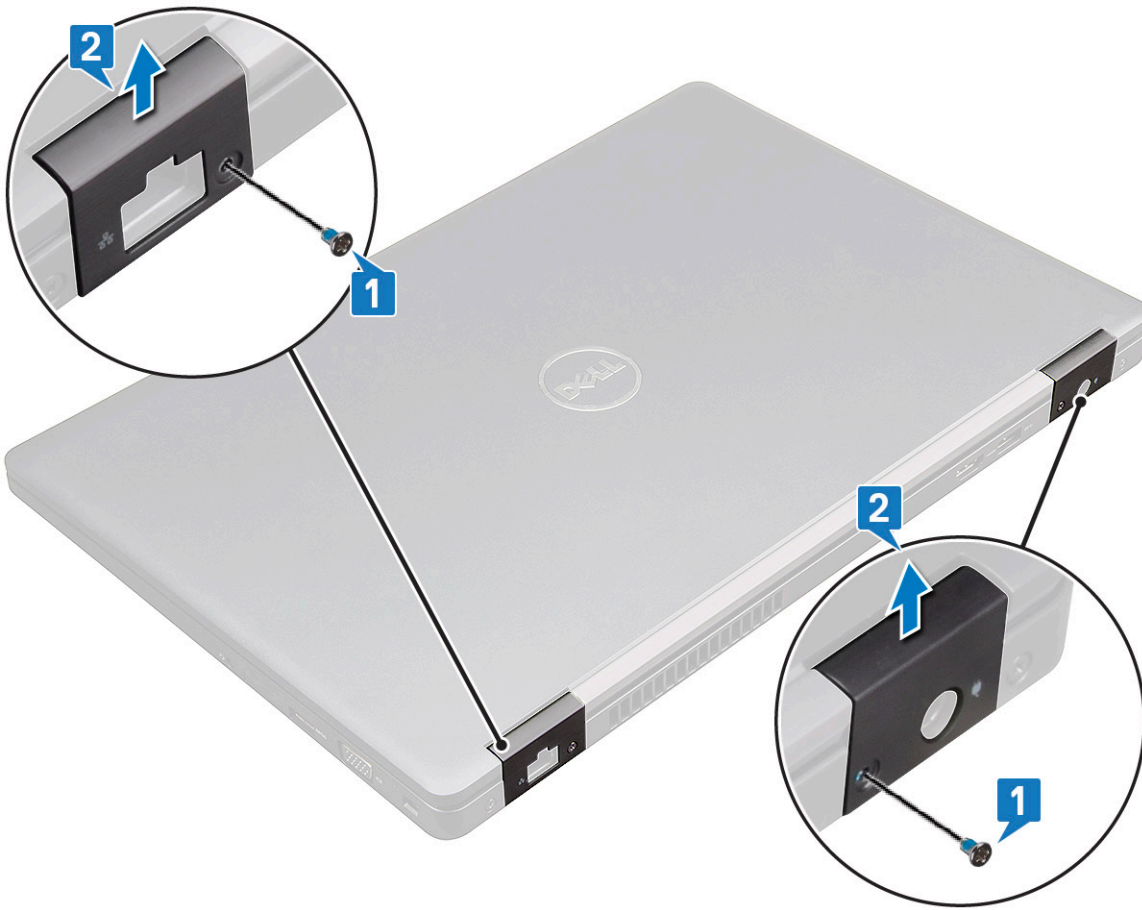
## Installing the speaker

- 1 Place the speakers into the slots on the laptop.
- 2 Route the speaker cable through the retention clips through the routing channel.
- 3 Connect the speaker and LED board cable to the laptop.
- 4 Install the:
  - a chassis frame
  - b SSD card or hard drive
  - c WWAN
  - d WLAN card
  - e battery
  - f base cover
- 5 Follow the procedure in [After working inside your computer](#).

## Hinge cap

### Removing the hinge cap

- 1 Follow the procedure in [Before working inside your computer](#).
- 2 Remove the:
  - a base cover
  - b battery
- 3 To remove the hinge cap:
  - a Remove the M2x3.0 (OD4.5) screws that secure the hinge cap to the laptop [1].
  - b Remove the hinge cap from the laptop [2].



## Installing the hinge cap

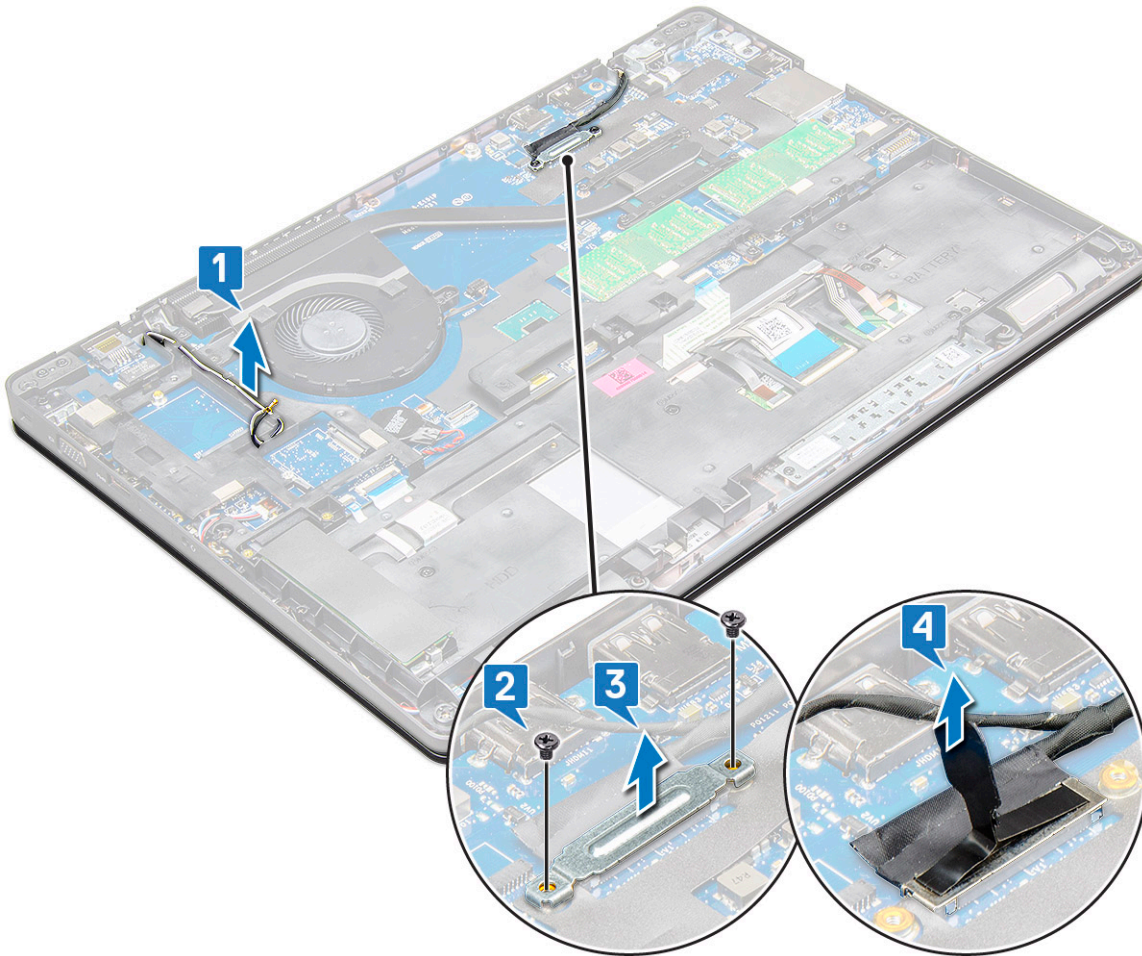
- 1 Place the hinge bracket to align with the screw holders on the laptop.
- 2 Tighten the M2x3.0 (OD4.5) screws to secure the display assembly to the laptop.
- 3 Install the:
  - a battery
  - b base cover
- 4 Follow the procedure in [After working inside your computer](#).

## Display assembly

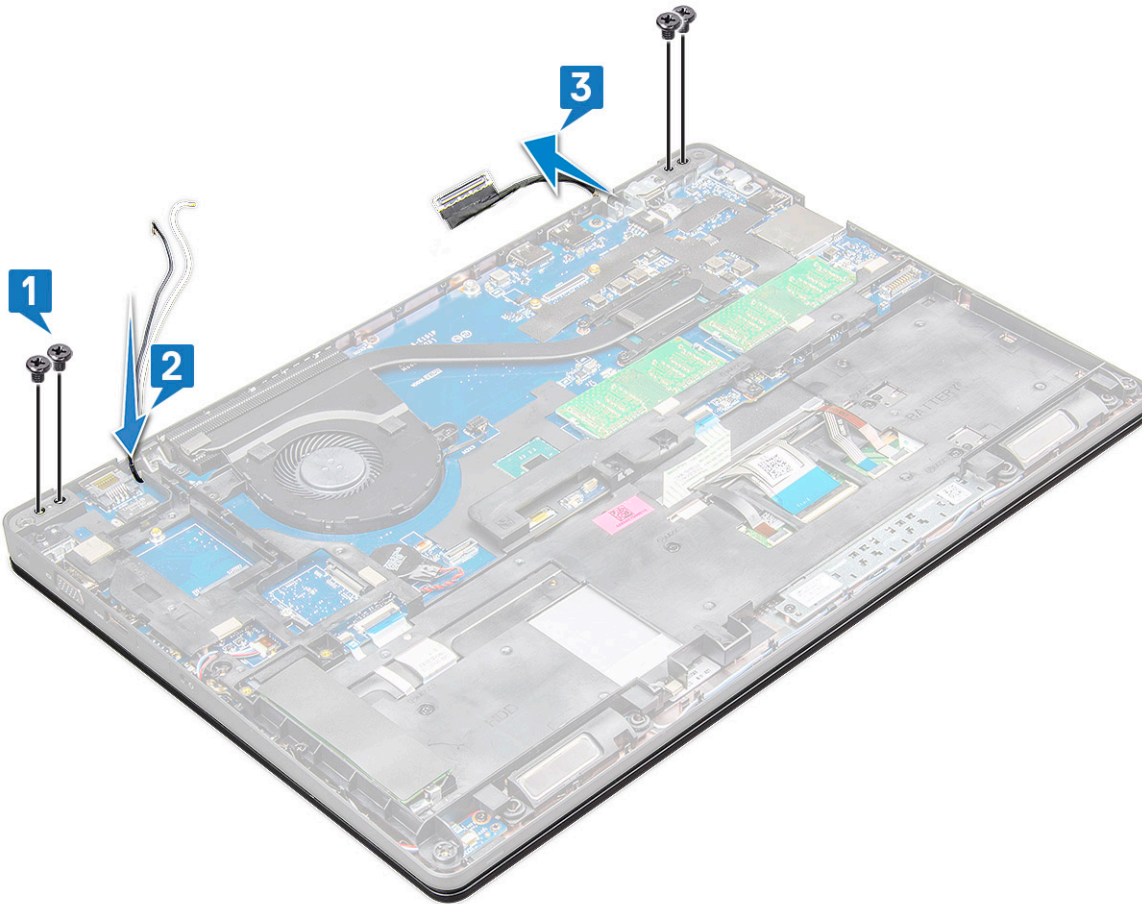
### Removing the display assembly

- 1 Follow the procedure in [Before working inside your computer](#).
- 2 Remove the:
  - a base cover
  - b battery
  - c WWAN
  - d WLAN card
  - e hinge cap
- 3 To disconnect the display cable:
  - a Release the WLAN cable from the routing channels [1].

- b Remove the M2.0x3.0 screws (2) and lift the metal bracket that secure the display cable on the computer [2,3].
- c Disconnect the display cable [4].



- 4 To remove hinge screws:
  - a Remove the M2.0x5.0 screws (4) that secure the display assembly to the system board [1].
  - b Release the antenna cables and display cable from the routing channel [2, 3].



- 5 Turn over the laptop.
- 6 To remove the display assembly:
  - a Remove the M2.0x5.0 screws (2) that secure the display assembly to the laptop [1].
  - b Flip to open the display [2].



7 Slide upward the display assembly away from the system base.




## Installing the display assembly

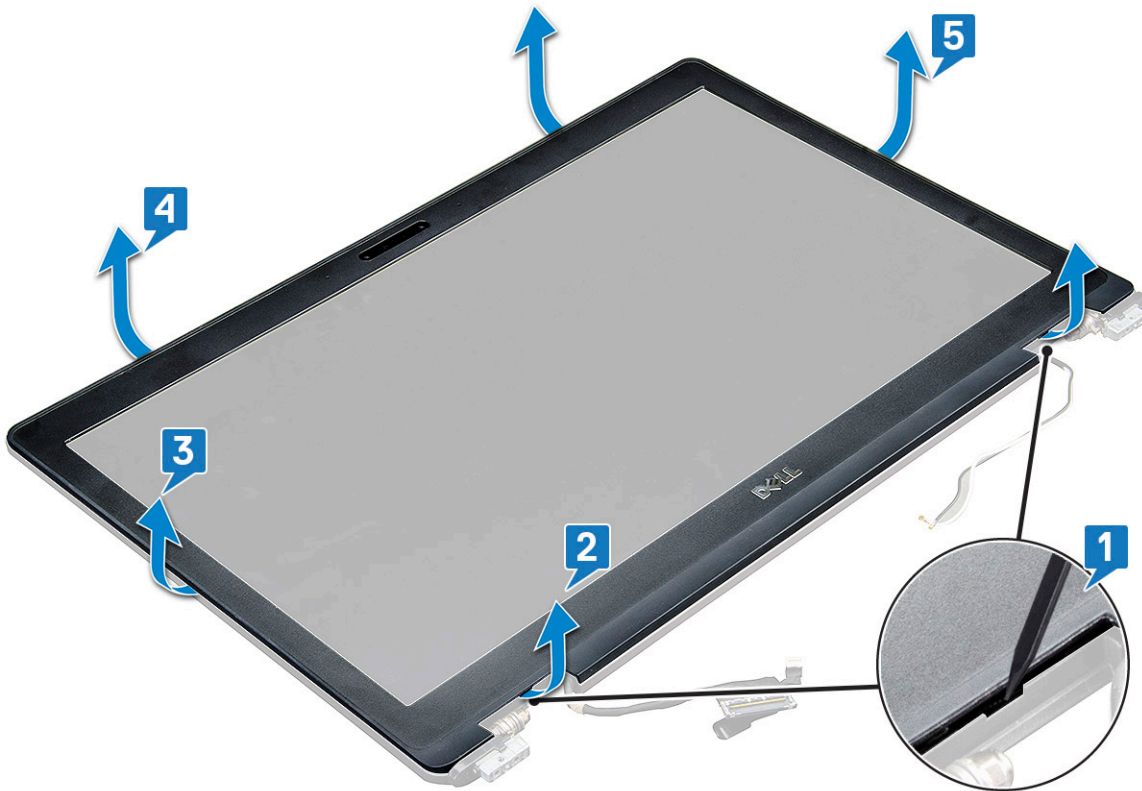
- 1 Place the display assembly to align with the screw holders on the laptop.
- 2 Tighten the M2.0x5.0 screws to secure the display assembly to the laptop.
- 3 Turn over the laptop.
- 4 Route the display cable through the routing channel and route the antenna cables by pushing it through the hole.
- 5 Connect the antenna cables and display cable to the connectors.
- 6 Place the display cable bracket over the connector and tighten the M2.0x5.0 screws to secure the display cable to the laptop.
- 7 Install the:
  - a [hinge cap](#)
  - b [WWAN](#)
  - c [WLAN card](#)
  - d [battery](#)
  - e [base cover](#)
- 8 Follow the procedure in [After working inside your computer](#).

## Display bezel

### Removing display bezel

- 1 Follow the procedure in [Before working inside your computer](#).
- 2 Remove the:
  - a [base cover](#)
  - b [battery](#)
  - c [WLAN card](#)
  - d [WWAN](#)
  - e [display assembly](#)
- 3 To remove the display bezel:
  - a Pry the display bezel at the base of the display [1].
  - b Lift the display bezel to release it [2].
  - c Pry the edges on the side of the display to release the display bezel [3, 4,5].

 **CAUTION:** The adhesive used on the LCD bezel to seal it with the LCD itself, makes it hard to remove the bezel as the adhesive is very strong and tends to stay stuck to the LCD portion and can peel the layers up or crack the glass when trying to pry the two items apart.



## Installing display bezel

- 1 Place the display bezel on the display assembly.
  - ① **NOTE:** Remove the protective covering on the adhesive on the LCD bezel before placing on the display assembly.
- 2 Starting from the top corner, press clockwise on the display bezel and work around the entire bezel until it clicks on to the display assembly.
- 3 Install the:
  - a display assembly
  - b WWAN
  - c WLAN card
  - d battery
  - e base cover
- 4 Follow the procedure in [After working inside your computer](#).

## Display hinges

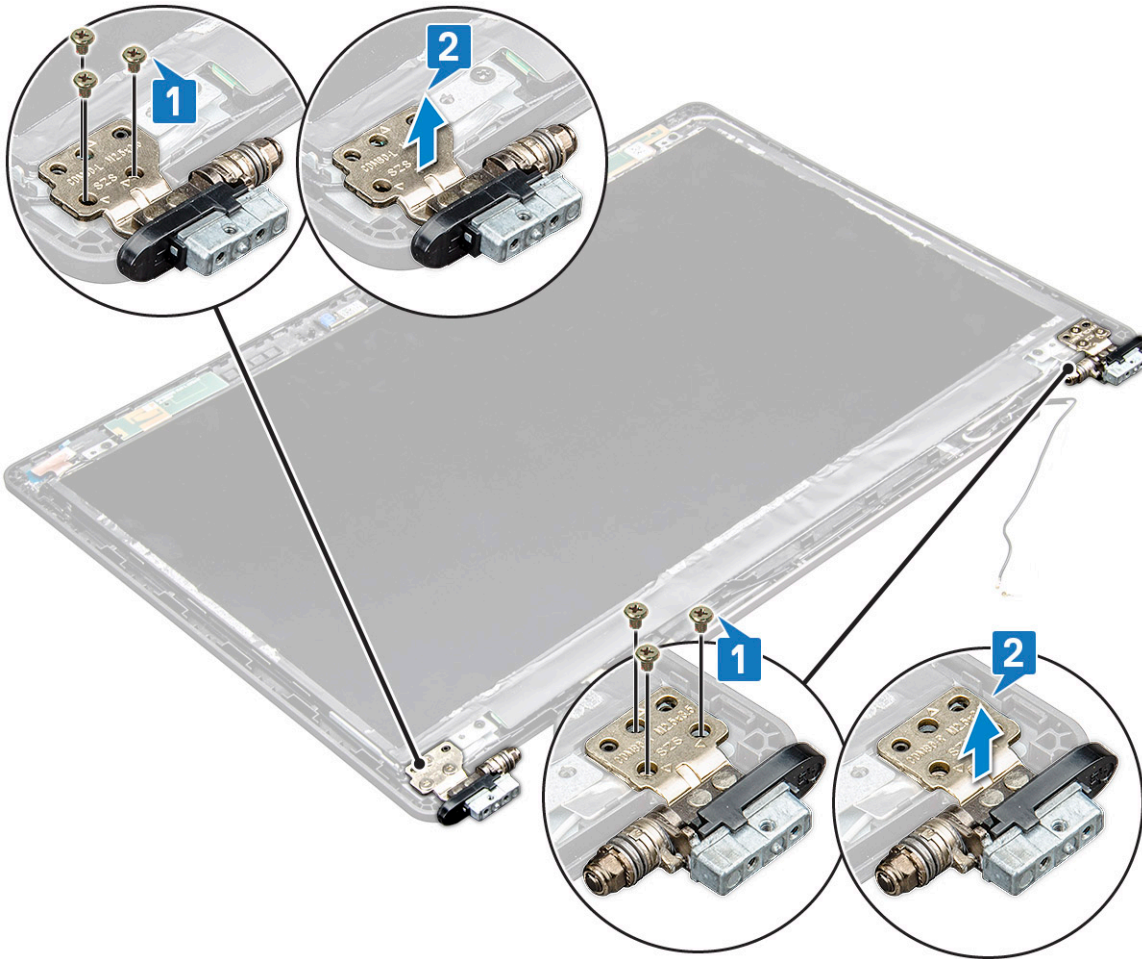
### Removing the display hinge

- 1 Follow the procedure in [Before working inside your computer](#).
- 2 Remove the:
  - a base cover
  - b battery
  - c WWAN
  - d WLAN card
  - e hinge cap



- f display assembly
- g display bezel

- 3 To remove the display hinge:
  - a Remove the M2.5x3.5 screws (3) that secure the display hinge to the display assembly [1].
  - b Lift the display hinge away from the display assembly [2].
  - c Repeat the step 3a. and 3b. to remove the other display hinge.



## Installing the display hinge

- 1 Place the display hinge cover on the display assembly.
- 2 Tighten the M2.5x3.5 screw to secure the display hinge cover to the display assembly.
- 3 Repeat the same procedure step 1-2 to install the other display hinge cover.
- 4 Install the:
  - a display bezel
  - b display assembly
  - c hinge cap
  - d WWAN
  - e WLAN card
  - f battery
  - g base cover
- 5 Follow the procedure in [After working inside your computer](#).



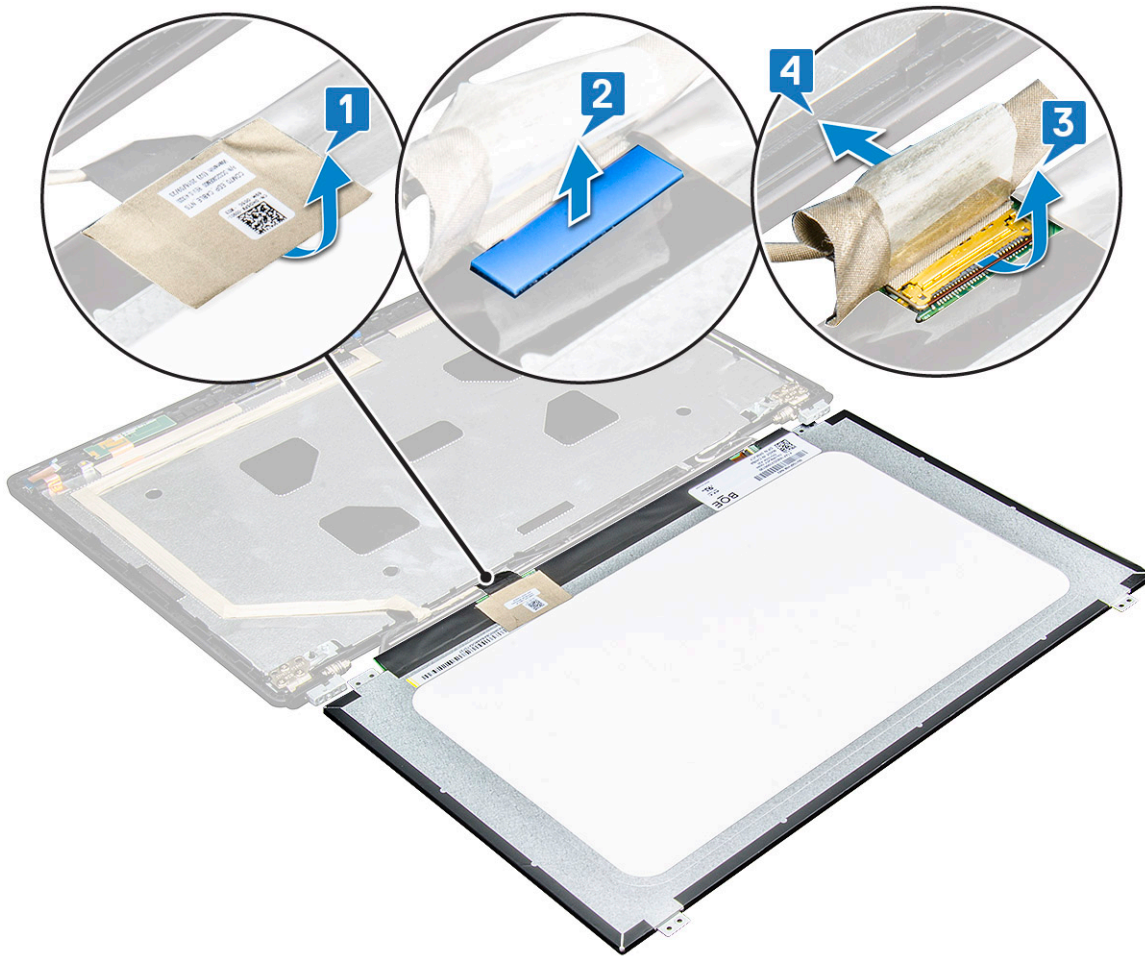
# Display panel

## Removing the display panel

- 1 Follow the procedure in [Before working inside your computer](#).
- 2 Remove the:
  - a [base cover](#)
  - b [battery](#)
  - c [WWAN](#)
  - d [WLAN card](#)
  - e [hinge cap](#)
  - f [display assembly](#)
  - g [display bezel](#)
- 3 Remove the M2.0x3.0 screws (4) that secure the display panel to the display assembly [1] and lift to turn over the display panel to access the eDP cable [2].



- 4 To remove the display panel:
  - a Peel off the adhesive tape [1].
  - b Lift the blue tape that secures the display cable [2].
  - c Lift the latch to disconnect the display cable from the connector on the display panel [3] [4].



## Installing the display panel

- 1 Connect the eDP cable to the connector and affix the blue tape.
- 2 Affix the adhesive tape to secure the eDP cable.
- 3 Replace the display panel to align with the screw holders on the display assembly.
- 4 Tighten the M2.0x3.0 screws to secure the display panel to the display assembly.
- 5 Install the:
  - a [display bezel](#)
  - b [display assembly](#)
  - c [hinge cap](#)
  - d [WWAN](#)
  - e [WLAN card](#)
  - f [battery](#)
  - g [base cover](#)
- 6 Follow the procedure in [After working inside your computer](#).

# Display (eDP) cable

## Removing the eDP cable

- 1 Follow the procedure in [Before working inside your computer](#).
- 2 Remove the:
  - a base cover
  - b battery
  - c WWAN
  - d WLAN card
  - e display assembly
  - f display bezel
- 3 Peel off the eDP cable from the adhesive to remove it from the display.



## Installing the eDP cable

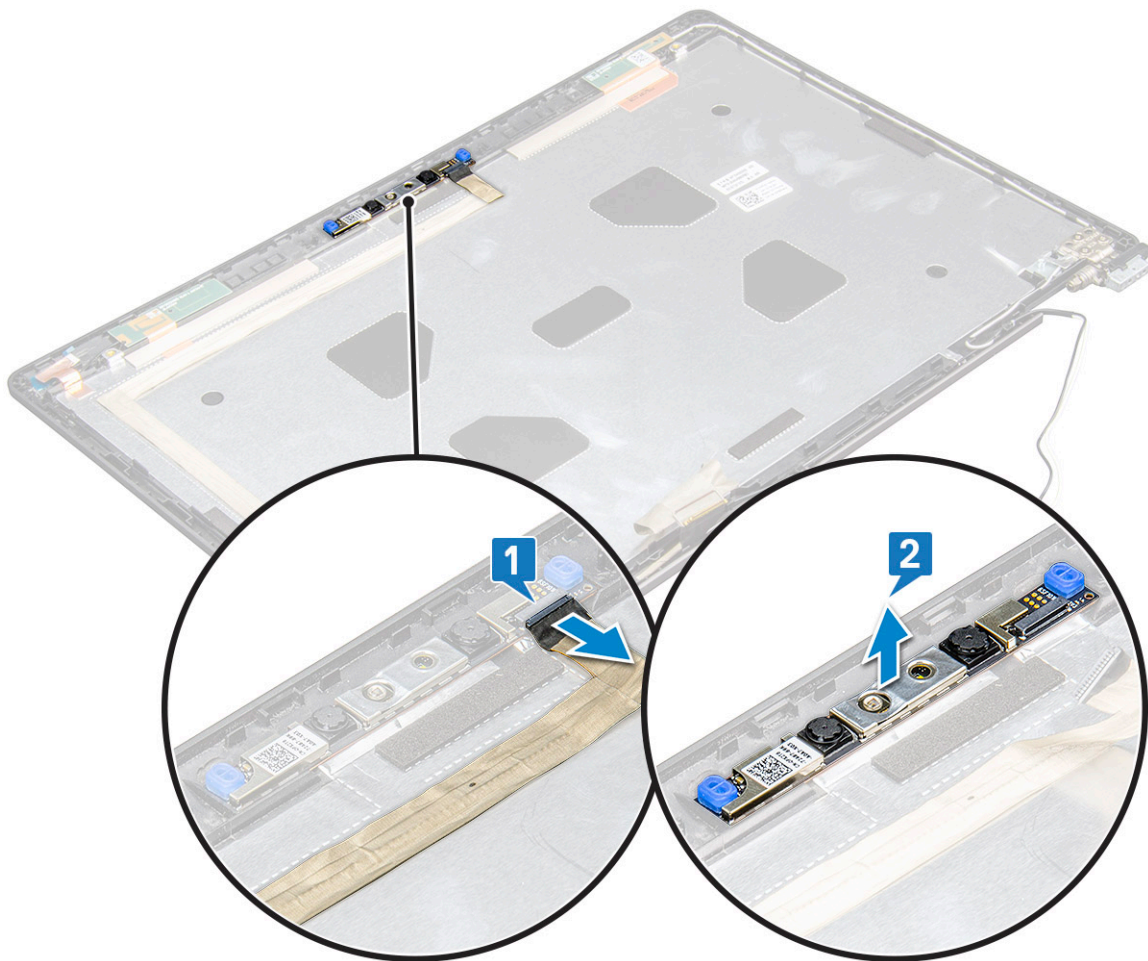
- 1 Affix the eDP cable on the display assembly.
- 2 Install the:
  - a display panel
  - b display bezel
  - c display assembly
  - d hinge cap
  - e WWAN
  - f WLAN card
  - g battery
  - h base cover
- 3 Follow the procedure in [After working inside your computer](#).



# Camera

## Removing camera

- 1 Follow the procedure in [Before working inside your computer](#).
- 2 Remove the:
  - a [base cover](#)
  - b [battery](#)
  - c [WLAN](#)
  - d [WWAN](#)
  - e [display assembly](#)
  - f [display bezel](#)
  - g [display panel](#)
- 3 To remove the camera:
  - a Disconnect the camera cable from the connector on the display panel[1].
  - b Carefully pry and lift the camera module from the display back cover [2].



## Installing camera

- 1 Insert the camera into the slot on the display assembly.
- 2 Connect the display cable to the connector.
- 3 Affix the two conductive tape above the camera.
- 4 Install the:
  - a display panel
  - b display bezel
  - c display assembly
  - d WLAN
  - e WWAN
  - f memory module
  - g battery
  - h base cover
- 5 Follow the procedure in [After working inside your computer](#).

## Display back cover assembly

### Removing the display back cover assembly

These instructions are applicable only for a non-touch screen.

- 1 Follow the procedure in [Before working inside your computer](#).
- 2 Remove the:
  - a base cover
  - b battery
  - c WWAN card
  - d WLAN card
  - e display assembly
  - f display bezel
  - g display panel
  - h eDP cable
  - i camera
- 3 The display back cover assembly is the remaining component, after removing all the components.

### Installing the display back cover assembly

These instructions are applicable only for a non-touch screen.

- 1 The display back cover assembly is the remaining component, after removing all the components.
- 2 Install the:
  - a camera
  - b eDP cable
  - c display panel
  - d display bezel
  - e display assembly
  - f WWAN card
  - g WLAN card
  - h battery



i base cover

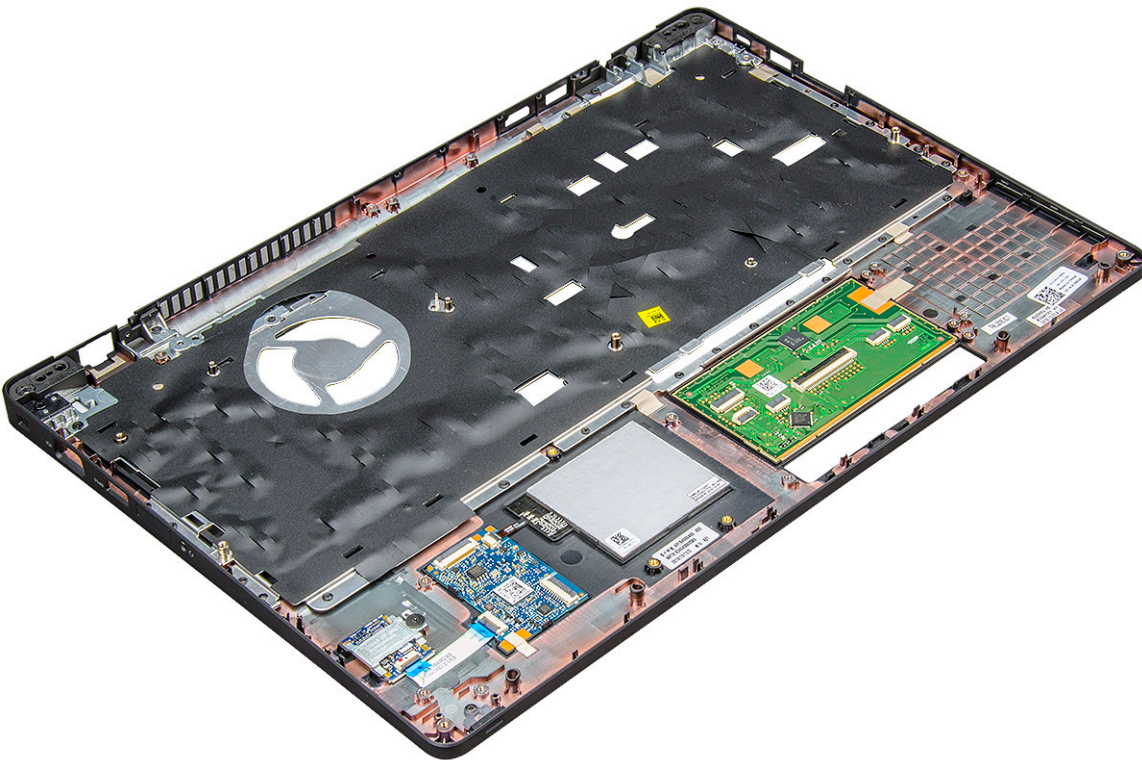
- 3 Follow the procedure in [After working inside your computer](#).

## Palm rest

### Replacing the palm rest

- 1 Follow the procedure in [Before working inside your computer](#).
- 2 Remove the:
  - a base cover
  - b battery
  - c keyboard
  - d WLAN card
  - e SSD card or hard drive
  - f memory module
  - g heat sink
  - h coin cell battery
  - i chassis frame
  - j system board
  - k hinge cap
  - l display assembly

**NOTE:** The component you are left with is the palm rest.



- 3 Install the following components on the new palm rest.
  - a display assembly
  - b hinge cap
  - c system board
  - d chassis frame

- e coin cell battery
- f heat sink
- g memory module
- h SSD card or hard drive
- i WLAN card
- j keyboard
- k battery
- l base cover

4 Follow the procedure in [After working inside your computer](#).



# Technology and components

This chapter details the technology and components available in the system.

Topics:

- [Power adapter](#)
- [Kaby Lake — 7th Generation Intel Core processors](#)
- [Kaby Lake Refresh — 8th Generation Intel Core processors](#)
- [DDR4](#)
- [HDMI 1.4- HDMI 2.0](#)
- [USB features](#)
- [USB Type-C](#)

## Power adapter

This laptop is shipped with 7.4mm barrel plug on power adapter.

**⚠ WARNING:** When you disconnect the power adapter cable from the laptop, grasp the connector, not the cable itself, and then pull firmly but gently to avoid damaging the cable.

**⚠ WARNING:** The power adapter works with electrical outlets worldwide. However, power connectors and power strips vary among countries. Using an incompatible cable or improperly connecting the cable to the power strip or electrical outlet may cause fire or equipment damage.

## Kaby Lake — 7th Generation Intel Core processors

The 7th Gen Intel Core processor (Kaby Lake) family is the successor of 6th generation processors (Sky Lake). It's main features include:

- Intel 14nm Manufacturing Process Technology
- Intel Turbo Boost Technology
- Intel Hyper Threading Technology
- Intel Built-in Visuals
  - Intel HD graphics - exceptional videos, editing smallest details in the videos
  - Intel Quick Sync Video - excellent video conferencing capability, quick video editing and authoring
  - Intel Clear Video HD - visual quality and color fidelity enhancements for HD playback and immersing web browsing
- Integrated memory controller
- Intel Smart Cache
- Optional Intel vPro technology (on i5/i7) with Active Management Technology 11.6
- Intel Rapid Storage Technology



# Kaby lake Specifications

**Table 2. Kaby lake specifications**

Processor number	Clock Speed	Cache	No. of cores/No. of threads	Power	Memory type	Graphics
Intel Core i3-7100U (3M Cache, up to 2.4 GHz), Dual Core	2.4 GHz	3 MB	2/4	15 W	DDR4-2133	Intel HD graphics 620
Intel Core i5-7200U (3M Cache, up to 3.1 GHz), Dual Core	2.5 GHz	3 MB	2/4	15 W	DDR4-2133	Intel HD graphics 620
Intel Core i5-7300U (3M Cache, up to 3.5 GHz),vPro, Dual Core	2.6 GHz	3 MB	2/4	15 W	DDR4-2133	Intel HD graphics 620
Intel Core i7-7600U (4M Cache, up to 3.9 GHz), vPro, Dual Core	2.8 GHz	4 MB	2/4	15 W	DDR4-2133	Intel HD graphics 620
Intel Core i5-7300HQ (6M Cache, up to 3.5GHz), Quad Core, 35W CTDP	2.5 GHz	6 MB	4/4	35 W	DDR4-2133; DDR4-2400	Intel HD Graphics 630
Intel Core i5-7440HQ (6M Cache, up to 3.8GHz), Quad Core, 35W CTDP	2.8 GHz	6 MB	4/4	35 W	DDR4-2133; DDR4-2400	Intel HD Graphics 630
Intel Core i7-7820HQ (8M Cache up to 3.9GHz), Quad Core, 35W CTDP	2.9 GHz	8 MB	4/8	35 W	DDR4-2133; DDR4-2400	Intel HD Graphics 630

## Kaby Lake Refresh — 8th Generation Intel Core processors

The 8th Gen Intel Core processor (Kaby Lake Refresh) family is the successor of 7th generation processors. Its main features include:

- Intel 14nm+ Manufacturing Process Technology
- Intel Turbo Boost Technology
- Intel Hyper Threading Technology
- Intel Built-in Visuals
  - Intel HD graphics - exceptional videos, editing smallest details in the videos
  - Intel Quick Sync Video - excellent video conferencing capability, quick video editing and authoring
  - Intel Clear Video HD - visual quality and color fidelity enhancements for HD playback and immersing web browsing
- Integrated memory controller
- Intel Smart Cache
- Optional Intel vPro technology (on i5/i7) with Active Management Technology 11.6
- Intel Rapid Storage Technology



# Kaby Lake Refresh Specifications

**Table 3. Kaby Lake Refresh specifications**

Processor number	Clock Speed	Cache	No. of cores/No. of threads	Power	Memory type	Graphics
Intel Core i7-8650U	4.2 GHz	8 MB	4/8	15 W	DDR4-2400 or LPDDR3-2133	Intel UHD graphics 620
Intel Core i7-8550U	4.0 GHz	8 MB	4/8	15 W	DDR4-2400 or LPDDR3-2133	Intel UHD graphics 620
Intel Core i5-8350U	3.6 GHz	6 MB	4/8	15 W	DDR4-2400 or LPDDR3-2133	Intel UHD graphics 620
Intel Core i5-8250U	3.4 GHz	6 MB	4/8	15 W	DDR4-2400 or LPDDR3-2133	Intel UHD graphics 620

## DDR4

DDR4 (double data rate fourth generation) memory is a higher-speed successor to the DDR2 and DDR3 technologies and allows up to 512 GB in capacity, compared to the DDR3's maximum of 128 GB per DIMM. DDR4 synchronous dynamic random-access memory is keyed differently from both SDRAM and DDR to prevent the user from installing the wrong type of memory into the system.

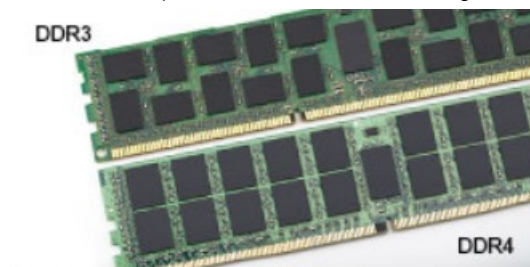
DDR4 needs 20 percent less or just 1.2 volts, compared to DDR3 which requires 1.5 volts of electrical power to operate. DDR4 also supports a new, deep power-down mode that allows the host device to go into standby without needing to refresh its memory. Deep power-down mode is expected to reduce standby power consumption by 40 to 50 percent.

## DDR4 Details

There are subtle differences between DDR3 and DDR4 memory modules, as listed below.

### Key notch difference

The key notch on a DDR4 module is in a different location from the key notch on a DDR3 module. Both notches are on the insertion edge but the notch location on the DDR4 is slightly different, to prevent the module from being installed into an incompatible board or platform.



**Figure 1. Notch difference**

### Increased thickness

DDR4 modules are slightly thicker than DDR3, to accommodate more signal layers.

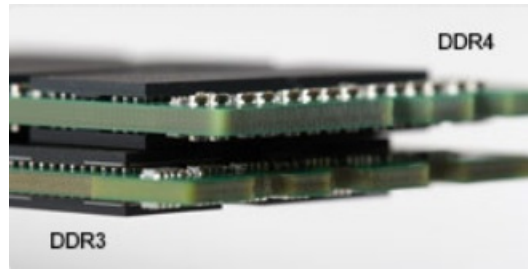


Figure 2. Thickness difference

Curved edge

DDR4 modules feature a curved edge to help with insertion and alleviate stress on the PCB during memory installation.



Figure 3. Curved edge

## Memory Errors

Memory errors on the system display the new ON-FLASH-FLASH or ON-FLASH-ON failure code. If all memory fails, the LCD does not turn on. Troubleshoot for possible memory failure by trying known good memory modules in the memory connectors on the bottom of the system or under the keyboard, as in some portable systems.

## HDMI 1.4- HDMI 2.0

This topic explains the HDMI 1.4/2.0 and its features along with the advantages.

HDMI (High-Definition Multimedia Interface) is an industry-supported, uncompressed, all-digital audio/video interface. HDMI provides an interface between any compatible digital audio/video source, such as a DVD player, or A/V receiver and a compatible digital audio and/or video monitor, such as a digital TV (DTV). The intended applications for HDMI TVs, and DVD players. The primary advantage is cable reduction and content protection provisions. HDMI supports standard, enhanced, or high-definition video, plus multichannel digital audio on a single cable.

**NOTE:** The HDMI 1.4 will provide 5.1 channel audio support.

## HDMI 1.4- HDMI 2.0 Features

- **HDMI Ethernet Channel** - Adds high-speed networking to an HDMI link, allowing users to take full advantage of their IP-enabled devices without a separate Ethernet cable
- **Audio Return Channel** - Allows an HDMI-connected TV with a built-in tuner to send audio data "upstream" to a surround audio system, eliminating the need for a separate audio cable
- **3D** - Defines input/output protocols for major 3D video formats, paving the way for true 3D gaming and 3D home theater applications
- **Content Type** - Real-time signaling of content types between display and source devices, enabling a TV to optimize picture settings based on content type
- **Additional Color Spaces** - Adds support for additional color models used in digital photography and computer graphics



- **4K Support** - Enables video resolutions far beyond 1080p, supporting next-generation displays that will rival the Digital Cinema systems used in many commercial movie theaters
- **HDMI Micro Connector** - A new, smaller connector for phones and other portable devices, supporting video resolutions up to 1080p
- **Automotive Connection System** - New cables and connectors for automotive video systems, designed to meet the unique demands of the motoring environment while delivering true HD quality

## Advantages of HDMI

- Quality HDMI transfers uncompressed digital audio and video for the highest, crispest image quality.
- Low -cost HDMI provides the quality and functionality of a digital interface while also supporting uncompressed video formats in a simple, cost-effective manner
- Audio HDMI supports multiple audio formats from standard stereo to multichannel surround sound
- HDMI combines video and multichannel audio into a single cable, eliminating the cost, complexity, and confusion of multiple cables currently used in A/V systems
- HDMI supports communication between the video source (such as a DVD player) and the DTV, enabling new functionality

## USB features

Universal Serial Bus, or USB, was introduced in 1996. It dramatically simplified the connection between host computers and peripheral devices like mice, keyboards, external drivers, and printers.

Let's take a quick look on the USB evolution referencing to the table below.

**Table 4. USB evolution**

Type	Data Transfer Rate	Category	Introduction Year
USB 3.0/USB 3.1 Gen 1Port	5 Gbps	Super Speed	2010
USB 2.0	480 Mbps	High Speed	2000

## USB 3.0/USB 3.1 Gen 1 (SuperSpeed USB)

For years, the USB 2.0 has been firmly entrenched as the de facto interface standard in the PC world with about 6 billion devices sold, and yet the need for more speed grows by ever faster computing hardware and ever greater bandwidth demands. The USB 3.0/USB 3.1 Gen 1 finally has the answer to the consumers' demands with a theoretically 10 times faster than its predecessor. In a nutshell, USB 3.1 Gen 1 features are as follows:

- Higher transfer rates (up to 5 Gbps)
- Increased maximum bus power and increased device current draw to better accommodate power-hungry devices
- New power management features
- Full-duplex data transfers and support for new transfer types
- Backward USB 2.0 compatibility
- New connectors and cable

The topics below cover some of the most commonly asked questions regarding USB 3.0/USB 3.1 Gen 1.

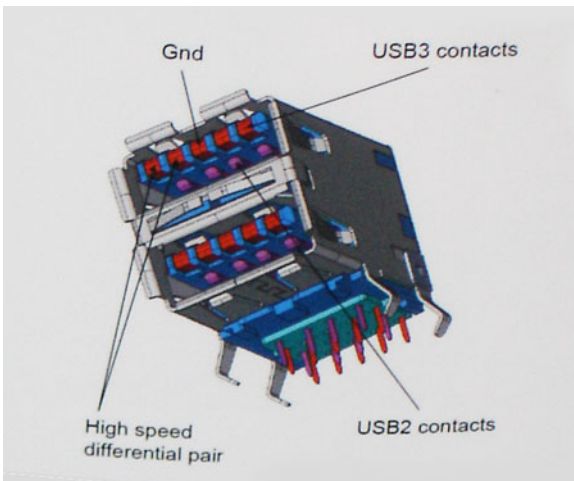


# Speed

Currently, there are 3 speed modes defined by the latest USB 3.0/USB 3.1 Gen 1 specification. They are Super-Speed, Hi-Speed and Full-Speed. The new SuperSpeed mode has a transfer rate of 4.8Gbps. While the specification retains Hi-Speed, and Full-Speed USB mode, commonly known as USB 2.0 and 1.1 respectively, the slower modes still operate at 480Mbps and 12Mbps respectively and are kept to maintain backward compatibility.

USB 3.0/USB 3.1 Gen 1 achieves the much higher performance by the technical changes below:

- An additional physical bus that is added in parallel with the existing USB 2.0 bus (refer to the picture below).
- USB 2.0 previously had four wires (power, ground, and a pair for differential data); USB 3.0/USB 3.1 Gen 1 adds four more for two pairs of differential signals (receive and transmit) for a combined total of eight connections in the connectors and cabling.
- USB 3.0/USB 3.1 Gen 1 utilizes the bidirectional data interface, rather than USB 2.0's half-duplex arrangement. This gives a 10-fold increase in theoretical bandwidth.



With today's ever increasing demands placed on data transfers with high-definition video content, terabyte storage devices, high megapixel count digital cameras etc., USB 2.0 may not be fast enough. Furthermore, no USB 2.0 connection could ever come close to the 480Mbps theoretical maximum throughput, making data transfer at around 320Mbps (40MB/s) — the actual real-world maximum. Similarly, USB 3.0/USB 3.1 Gen 1 connections will never achieve 4.8Gbps. We will likely see a real-world maximum rate of 400MB/s with overheads. At this speed, USB 3.0/USB 3.1 Gen 1 is a 10x improvement over USB 2.0.

# Applications

USB 3.0/USB 3.1 Gen 1 opens up the laneways and provides more headroom for devices to deliver a better overall experience. Where USB video was barely tolerable previously (both from a maximum resolution, latency, and video compression perspective), it's easy to imagine that with 5-10 times the bandwidth available, USB video solutions should work that much better. Single-link DVI requires almost 2Gbps throughput. Where 480Mbps was limiting, 5Gbps is more than promising. With its promised 4.8Gbps speed, the standard will find its way into some products that previously weren't USB territory, like external RAID storage systems.

Listed below are some of the available SuperSpeed USB 3.0/USB 3.1 Gen 1 products:

- External Desktop USB 3.0/USB 3.1 Gen 1 Hard Drives
- Portable USB 3.0/USB 3.1 Gen 1 Hard Drives
- USB 3.0/USB 3.1 Gen 1 Drive Docks & Adapters
- USB 3.0/USB 3.1 Gen 1 Flash Drives & Readers
- USB 3.0/USB 3.1 Gen 1 Solid-state Drives



- USB 3.0/USB 3.1 Gen 1 RAIDs
- Optical Media Drives
- Multimedia Devices
- Networking
- USB 3.0/USB 3.1 Gen 1 Adapter Cards & Hubs

## Compatibility

The good news is that USB 3.0/USB 3.1 Gen 1 has been carefully planned from the start to peacefully co-exist with USB 2.0. First of all, while USB 3.0/USB 3.1 Gen 1 specifies new physical connections and thus new cables to take advantage of the higher speed capability of the new protocol, the connector itself remains the same rectangular shape with the four USB 2.0 contacts in the exact same location as before. Five new connections to carry receive and transmitted data independently are present on USB 3.0/USB 3.1 Gen 1 cables and only come into contact when connected to a proper SuperSpeed USB connection.

Windows 8/10 will be bringing native support for USB 3.1 Gen 1 controllers. This is in contrast to previous versions of Windows, which continue to require separate drivers for USB 3.0/USB 3.1 Gen 1 controllers.

Microsoft announced that Windows 7 would have USB 3.1 Gen 1 support, perhaps not on its immediate release, but in a subsequent Service Pack or update. It is not out of the question to think that following a successful release of USB 3.0/USB 3.1 Gen 1 support in Windows 7, SuperSpeed support would trickle down to Vista. Microsoft has confirmed this by stating that most of their partners share the opinion that Vista should also support USB 3.0/USB 3.1 Gen 1.

Super-Speed support for Windows XP is unknown at this point. Given that XP is a seven-year-old operating system, the likelihood of this happening is remote.

## Advantages of Displayport over USB Type-C

- Full DisplayPort audio/video (A/V) performance (up to 4K at 60Hz)
- SuperSpeed USB (USB 3.1) data
- Reversible plug orientation and cable direction
- Backwards compatibility to VGA, DVI with adaptors
- Supports HDMI 2.0a and is backwards compatible with previous versions

## USB Type-C

USB Type-C is a new, tiny physical connector. The connector itself can support various exciting new USB standard like USB 3.1 and USB power delivery (USB PD).

## Alternate Mode

USB Type-C is a new connector standard that's very small. It's about a third the size of an old USB Type-A plug. This is a single connector standard that every device should be able to use. USB Type-C ports can support a variety of different protocols using "alternate modes," which allows you to have adapters that can output HDMI, VGA, DisplayPort, or other types of connections from that single USB port

## USB Power Delivery

The USB PD specification is also closely intertwined with USB Type-C. Currently, smartphones, tablets, and other mobile devices often use a USB connection to charge. A USB 2.0 connection provides up to 2.5 watts of power — that'll charge your phone, but that's about it. A laptop might require up to 60 watts, for example. The USB Power Delivery specification ups this power delivery to 100 watts. It's bi-

directional, so a device can either send or receive power. And this power can be transferred at the same time the device is transmitting data across the connection.

This could spell the end of all those proprietary laptop charging cables, with everything charging via a standard USB connection. You could charge your laptop from one of those portable battery packs you charge your smartphones and other portable devices from today. You could plug your laptop into an external display connected to a power cable, and that external display would charge your laptop as you used it as an external display — all via the one little USB Type-C connection. To use this, the device and the cable have to support USB Power Delivery. Just having a USB Type-C connection doesn't necessarily mean they do.

## USB Type-C and USB 3.1

USB 3.1 is a new USB standard. USB 3's theoretical bandwidth is 5 Gbps, while USB 3.1 Gen2 is 10Gbps. That's double the bandwidth, as fast as a first-generation Thunderbolt connector. USB Type-C isn't the same thing as USB 3.1. USB Type-C is just a connector shape, and the underlying technology could just be USB 2 or USB 3.0. In fact, Nokia's N1 Android tablet uses a USB Type-C connector, but underneath it's all USB 2.0 — not even USB 3.0. However, these technologies are closely related.



# System specifications

## Technical specifications

**NOTE:** Offerings may vary by region. For more information regarding the configuration of your computer in:

- Windows 10, click or tap **Start**  > **Settings** > **System** > **About**.

## System specifications

Feature	Specification
Chipset	Intel Kaby Lake (integrated with the processor)
DRAM bus width	64-bit
Flash EPROM	SPI 128 Mbits

## Processor specifications

Feature	Specification
Types	<ul style="list-style-type: none"> <li>8th Gen Intel® Core™ Processors up to i7, U Quad Core</li> <li>7th Gen Intel® Core™ Processors up to i5, U Dual Core</li> </ul>
L3 cache	
i3 U-series	<ul style="list-style-type: none"> <li>3 MB</li> </ul>
i5 U-series	<ul style="list-style-type: none"> <li>3 MB - 6 MB</li> </ul>
i7 U-series	<ul style="list-style-type: none"> <li>8 MB</li> </ul>

## Memory specifications

Feature	Specification
Memory connector	Two SODIMM slots
Memory capacity	4 GB, 8 GB, and 32 GB
Memory type	DDR4 SDRAM



Feature	Specification
Speed	<ul style="list-style-type: none"> <li>· 2400 MHz non ECC for 8th Gen processors</li> <li>· 2133 MHz non ECC for 7th Gen processors</li> </ul>
Minimum memory	4 GB
Maximum memory	32 GB

## Storage specifications

Feature	Specification
SSD M.2 2280 / M.S 2230 / PCIe NVMe	up to 512GB, OPAL SED options /up to 1TB, OPAL SED options /PCIe x2 NVMe
HDD	up to 1TB, Hybrid, OPAL SED options

## Audio specifications

Feature	Specification
Types	High-definition audio
Controller	Realtek ALC3246
Stereo conversion	Digital audio-out through HDMI — up to 7.1 compressed and uncompressed audio
Internal interface	High-definition audio codec
External interface	Stereo headset/mic combo
Speakers	2
Internal speaker amplifier	2 W (RMS) per channel
Volume controls	Hot keys

## Video specifications

Feature	Specification
Type	Integrated on system board, hardware accelerated
Graphic cards	Intel® HD Graphics 620 (Integrated in Intel 7th core processors) Intel® UHD Graphics 620 (Integrated in Intel 8th core processors) NVIDIA GeForce® MX130, 2GB GDDR5
Data bus	Integrated video
External display support	<ul style="list-style-type: none"> <li>· 19-pin HDMI connector</li> </ul>



Feature	Specification
	<ul style="list-style-type: none"> <li>15-pin VGA connector</li> <li>DisplayPort over USB Type-C connector</li> </ul>

## Camera specifications

Feature	Specification
Camera resolution	1 megapixels
HD Panel Resolution	1280 x 720 pixels
FHD Panel Resolution	1280 x 720 pixels
HD Panel Video Resolution (maximum)	1280 x 720 pixels
FHD Panel Video Resolution (maximum)	1280 x 720 pixels
Diagonal viewing angle	74°

## Communication specifications

Features	Specification
Network adapter	10/100/1000 Mb/s Ethernet (RJ-45)
Wireless	<ul style="list-style-type: none"> <li>Internal wireless local area network (WLAN)</li> <li>Internal Wireless wide area network (WWAN)</li> </ul>

## Port and connector specifications

Feature	Specification
Audio	Stereo headset / mic combo
Video	<ul style="list-style-type: none"> <li>HDMI 1.4 (UMA)/ HDMI 2.0 (Discrete)</li> <li>15 pin VGA connector</li> </ul>
Network adapter	One RJ-45 connector
USB	Three USB 3.1 Gen 1 (one with PowerShare),
Memory card reader	SD 4.0 Memory card reader
Micro SIM (uSIM) card	external micro SIM card tray

Feature	Specification
USB port	It has one option: <ul style="list-style-type: none"> <li>· One Display Port over USB Type C</li> </ul>

## Contactless smart card specifications

Feature	Specification
Supported Smart Cards/Technologies	BTO with USH

## Display specifications

Feature	Specification
Type	<ul style="list-style-type: none"> <li>· Non-touch HD</li> <li>· Non-touch FHD</li> <li>· Touch FHD with Embedded Touch</li> </ul>
Height	360 mm (14.17 inches)
Width	224.3 mm (8.83 inches)
Diagonal	396.24 mm (15.6 inches)
Active area (X/Y)	344.23 mm x 193.54 mm
Actual screen size	15.6 inches
<b>Touch FHD anti-glare:</b>	
Maximum resolution	1920 x 1080
Maximum brightness	300 nits
Refresh rate	60 Hz
Maximum viewing angles (horizontal)	+80/-80
Maximum viewing angles (vertical)	+80/-80
Pixel pitch	0.161 mm (0.00634 inches)
<b>HD anti-glare:</b>	
Maximum resolution	1366 x 768
Maximum brightness	200 nits
Refresh rate	60 Hz
Maximum viewing angles (horizontal)	40/40



Feature	Specification
Maximum viewing angles (vertical)	+10/-30
Pixel pitch	0.2265 mm (0.0089 inches)

## Keyboard specifications

Feature	Specification
Number of keys	<ul style="list-style-type: none"> <li>· United States: 82 keys</li> <li>· United Kingdom: 83 keys</li> <li>· Japan: 86 keys</li> <li>· Brazil: 84 keys</li> </ul>

## Touchpad specifications

Feature	Specification
Active Area:	
X-axis	101.7mm
Y-axis	55.2mm

## Battery specifications

Feature	Specification
Type	4 cell Long Cycle Life Battery
Typical Amp-hour capacity	3.684Ahr
Typical Amp-hour capacity	4.473Ahr
<b>Battery specifications :</b>	68 WHr/4 cell Long Cycle Life Battery
Depth	233.00 mm (9.17 inches)
Height	7.5 mm (0.28 inch)
Width	95.90 mm (3.78 inches)
Weight	340 g (0.74 lb)
Voltage	7.6 V DC
Typical Amp-hour capacity	8.947Ahr
Temperature range	<ul style="list-style-type: none"> <li>· Charge: 0°C to 50°C (32°F to 158°F)</li> <li>· Discharge: 0°C to 70°C (32°F to 122°F)</li> </ul>

Feature	Specification
Operating	· Operating: 0°C to 35°C (32°F to 95°F)
Non-operating	- 20°C to 65°C (- 4°F to 149°F)
Coin cell battery	3 V CR2032 lithium coin cell

## AC Adapter specifications

Feature	Specification
Type	65 W/90 W
Input voltage	100 V AC to 240 V AC
Input current (maximum)	1.7 A / 1.6 A
Input frequency	50 Hz to 60 Hz
Output current	3.34 A (continuous) / 4.62 A (continuous)
Rated output voltage	19.5 +/- 1.0 V DC
Temperature range (Operating)	0°C to 40°C (32°F to 104°F)
Temperature range (Non-Operating)	-40°C to 70°C (-40°F to 158°F)
Barrel size	7.4mm

## Physical specifications

Feature	Specification
Front height	· Non Touch - 20.6 mm (0.8 inch) · Touch - 21.65 mm (0.8 inch)
Back height	· Non Touch - 23.25 mm (0.9 inch) · Touch - 24.3 mm(0.9 inch)
Width	· 376.0 mm (14.8 inches)
Depth	· 250.7 mm (9.9 inches)
Starting weight	· 4.14 lbs (1.88 kg)



# Environmental specifications

Temperature	Specifications
Operating	0°C to 35°C (32°F to 95°F)
Storage	-40°C to 65°C (-40°F to 149°F)

Relative humidity (maximum)	Specifications
Operating	10 % to 90 % (non condensing)
Storage	5 % to 95 % (non condensing)

Altitude (maximum)	Specifications
Operating	0 m to 3048 m (0 ft to 10,000 ft)
Non-operating	0 m to 10,668 m (0 ft to 35,000 ft)

Airborne contaminant level	G1 as defined by ISA-71.04-1985
----------------------------	---------------------------------



# System setup options

**NOTE:** Depending on the computer and its installed devices, the items listed in this section may or may not appear.

Topics:

- [Boot Sequence](#)
- [Navigation keys](#)
- [System Setup overview](#)
- [Accessing System Setup](#)
- [General screen options](#)
- [System Configuration screen options](#)
- [Video screen options](#)
- [Security screen options](#)
- [Secure Boot screen options](#)
- [Intel Software Guard Extensions](#)
- [Performance screen options](#)
- [Power Management screen options](#)
- [POST Behavior screen options](#)
- [Virtualization support screen options](#)
- [Wireless screen options](#)
- [Maintenance screen options](#)
- [System Log screen options](#)
- [Updating the BIOS in Windows](#)
- [System and setup password](#)

## Boot Sequence

Boot Sequence allows you to bypass the System Setup–defined boot device order and boot directly to a specific device (for example: optical drive or hard drive). During the Power-on Self Test (POST), when the Dell logo appears, you can:

- Access System Setup by pressing F2 key
- Bring up the one-time boot menu by pressing F12 key

The one-time boot menu displays the devices that you can boot from including the diagnostic option. The boot menu options are:

- Removable Drive (if available)
- STXXXX Drive

**NOTE:** XXX denotes the SATA drive number.

- Optical Drive (if available)
- SATA Hard Drive (if available)
- Diagnostics

**NOTE:** Choosing Diagnostics, will display the ePSA diagnostics screen.



The boot sequence screen also displays the option to access the System Setup screen.

## Navigation keys

**NOTE:** For most of the System Setup options, changes that you make are recorded but do not take effect until you restart the system.

Keys	Navigation
Up arrow	Moves to the previous field.
Down arrow	Moves to the next field.
Enter	Selects a value in the selected field (if applicable) or follow the link in the field.
Spacebar	Expands or collapses a drop-down list, if applicable.
Tab	Moves to the next focus area.

**NOTE:** For the standard graphics browser only.

**Esc** Moves to the previous page until you view the main screen. Pressing Esc in the main screen displays a message that prompts you to save any unsaved changes and restarts the system.

## System Setup overview

System Setup allows you to:

- Change the system configuration information after you add, change, or remove any hardware in your computer.
- Set or change a user-selectable option such as the user password.
- Read the current amount of memory or set the type of hard drive installed.

Before you use System Setup, it is recommended that you write down the System Setup screen information for future reference.

**CAUTION:** Unless you are an expert computer user, do not change the settings for this program. Certain changes can cause your computer to work incorrectly.

## Accessing System Setup

- 1 Turn on (or restart) your computer.
- 2 After the white Dell logo appears, press F2 immediately.  
The System Setup page is displayed.

**NOTE:** If you wait too long and the operating system logo appears, wait until you see the desktop. Then, shut down or restart your computer and try again.

**NOTE:** After the Dell logo appears, you can also press F12 and then select BIOS setup.

## General screen options

This section lists the primary hardware features of your computer.

Option	Description
--------	-------------

**System Information** This section lists the primary hardware features of your computer.

- System Information: Displays BIOS Version, Service Tag, Asset Tag, Ownership Tag, Ownership Date, Manufacture Date, and the Express Service Code.



Option	Description
	<ul style="list-style-type: none"> <li>Memory Information: Displays Memory Installed, Memory Available, Memory Speed, Memory Channels Mode, Memory Technology, DIMM ASize, DIMM B Size,</li> <li>Processor Information: Displays Processor Type, Core Count, Processor ID, Current Clock Speed, Minimum Clock Speed, Maximum Clock Speed, Processor L2 Cache, Processor L3 Cache, HT Capable, and 64-Bit Technology.</li> <li>Device Information: Displays Primary Hard Drive, M.2 SATA2, M.2 SATA, M.2 PCIe SSD-0, LOM MAC Address, Video Controller, Video BIOS Version, Video Memory, Panel Type, Native Resolution, Audio Controller, Wi-Fi Device, WiGig Device, Cellular Device, Bluetooth Device.</li> </ul>

**Battery Information** Displays the battery status and the type of AC adapter connected to the computer.

**Boot Sequence** Allows you to change the order in which the computer attempts to find an operating system.

- Diskette Drive
- Internal HDD
- USB Storage Device
- CD/DVD/CD-RW Drive
- Onboard NIC

**Advanced Boot Options** This option allows you the legacy option ROMs to load. By default, the **Enable Legacy Option ROMs** is disabled.

**UEFI Booth Path Security** This options controls whether or not the system will prompt the user to enter the Admin password when booting a UEFI boot path from the F12 Boot Menu.

- Always, Except Internal HDD
- Always
- Never (by default enabled)

**Date/Time** Allows you to change the date and time.


## System Configuration screen options

Option	Description
<b>Integrated NIC</b>	Allows you to configure the integrated network controller. The options are: <ul style="list-style-type: none"> <li>Disabled</li> <li>Enabled</li> <li>Enabled w/PXE: This option is enabled by default.</li> </ul>

<b>Parallel Port</b>	Allows you to configure the parallel port on the docking station. The options are: <ul style="list-style-type: none"> <li>Disabled</li> <li>AT: This option is enabled by default.</li> <li>PS2</li> <li>ECP</li> </ul>
----------------------	---

<b>Serial Port</b>	Allows you to configure the integrated serial port. The options are: <ul style="list-style-type: none"> <li>Disabled</li> <li>COM1: This option is enabled by default.</li> <li>COM2</li> <li>COM3</li> </ul>
--------------------	---



Option	Description
	<ul style="list-style-type: none"> <li>· COM4</li> </ul>
<b>SATA Operation</b>	<p>Allows you to configure the internal SATA hard-drive controller. The options are:</p> <ul style="list-style-type: none"> <li>· Disabled</li> <li>· AHCI</li> <li>· RAID On: This option is enabled by default.</li> </ul>
<b>Drives</b>	<p>Allows you to configure the SATA drives on board. All drives are enabled by default. The options are:</p> <ul style="list-style-type: none"> <li>· SATA-0</li> <li>· SATA-2</li> <li>· SATA-4</li> <li>· M.2 PCI-e SSD-0</li> </ul>
<b>SMART Reporting</b>	<p>This field controls whether hard drive errors for integrated drives are reported during system startup. This technology is part of the SMART (Self Monitoring Analysis and Reporting Technology) specification. This option is disabled by default.</p> <ul style="list-style-type: none"> <li>· Enable SMART Reporting</li> </ul>
<b>USB Configuration</b>	<p>This is an optional feature.</p> <p>This field configures the integrated USB controller. If Boot Support is enabled, the system is allowed to boot any type of USB Mass Storage Devices (HDD, memory key, floppy).</p> <p>If USB port is enabled, device attached to this port is enabled and available for OS.</p> <p>If USB port is disabled, the OS cannot see any device attached to this port.</p> <p>The options are:</p> <ul style="list-style-type: none"> <li>· Enable USB Boot Support (by default enable)</li> <li>· Enable External USB Port (by default enable)</li> <li>· Enable Thunderbolt Ports (by default enable)</li> <li>· Enable Thunderbolt Boot Support</li> <li>· Always Allow Dell Docks (by default enable)</li> <li>· Enable Thunderbolt (ans PCIe behind TBT) Pre-boot</li> <li>· Security level — No Securiry</li> <li>· Security level — User Configuration(by default enable)</li> <li>· Security level — Secure connect</li> <li>· Security level — Display Port Only</li> </ul>
	<p> <b>NOTE: USB keyboard and mouse always work in the BIOS setup irrespective of these settings.</b></p>
<b>USB PowerShare</b>	<p>This field configures the USB PowerShare feature behavior. This option allows you to charge external devices using the stored system battery power through the USB PowerShare port.</p>
<b>Audio</b>	<p>This field enables or disables the integrated audio controller. By default, the <b>Enable Audio</b> option is selected. The options are:</p> <ul style="list-style-type: none"> <li>· Enable Microphone (by default enable)</li> <li>· Enable Internal Speaker (by default enable)</li> </ul>



Option	Description
<b>Keyboard Illumination</b>	<p>This field lets you choose the operating mode of the keyboard illumination feature. The keyboard brightness level can be set from 0% to 100%. The options are:</p> <ul style="list-style-type: none"> <li>· Disabled</li> <li>· Dim</li> <li>· Bright (enabled by default)</li> </ul>
<b>Keyboard Backlight Timeout on AC</b>	<p>The Keyboard Backlight Timeout dims out with AC option. The main keyboard illumination feature is not affected. Keyboard Illumination will continue to support the various illumination levels. This field has an effect when the backlight is enabled.</p> <ul style="list-style-type: none"> <li>· 5 seconds</li> <li>· 10 seconds (enabled by default)</li> <li>· 15 seconds</li> <li>· 30 seconds</li> <li>· 1 minute</li> <li>· 5 minutes</li> <li>· 15 minutes</li> <li>· Never</li> </ul>
<b>Keyboard Backlight Timeout on Battery</b>	<p>The Keyboard Backlight Timeout dims out with Battery option. The main keyboard illumination feature is not affected. Keyboard Illumination will continue to support the various illumination levels. This field has an effect when the backlight is enabled.</p> <ul style="list-style-type: none"> <li>· 5 seconds</li> <li>· 10 seconds (enabled by default)</li> <li>· 15 seconds</li> <li>· 30 seconds</li> <li>· 1 minute</li> <li>· 5 minutes</li> <li>· 15 minutes</li> <li>· Never</li> </ul>
<b>Keyboard Backlight with AC</b>	<p>The Keyboard Backlight with AC option does not affect the main keyboard illumination feature. Keyboard Illumination will continue to support the various illumination levels. This field has an effect when the backlight is enabled.</p>
<b>Touchscreen</b>	<p>This fields controls whether the touchscreen is enabled or disabled.</p> <ul style="list-style-type: none"> <li>· Touchscreen (enabled by default)</li> </ul>
<b>Unobtrusive Mode</b>	<p>This option, when enabled, pressing Fn+F7 turns off all light and sound emissions in the system. To resume normal operation, press Fn+F7 again. This option is disabled by default.</p>
<b>Miscellaneous Devices</b>	<p>Allows you to enable or disable the following devices:</p> <ul style="list-style-type: none"> <li>· Enable Camera —enabled by default</li> <li>· Enable Hard Drive Free Fall Protection (enabled by default)</li> <li>· Enable Secure Digital (SD) Card (enabled by default)</li> <li>· Secure Digital (SD) Card Boot</li> <li>· Secure Digital (SD) Card Read — only Mode</li> </ul>



# Video screen options

Option	Description
<b>LCD Brightness</b>	Allows you to set the display brightness depending up on the power source (On Battery and On AC).

**NOTE:** The video setting will be visible only when a video card is installed into the system.

# Security screen options

Option	Description
<b>Admin Password</b>	<p>Allows you to set, change, or delete the administrator (admin) password.</p> <p><b>NOTE:</b> You must set the admin password before you set the system or hard drive password. Deleting the admin password automatically deletes the system password and the hard drive password.</p> <p><b>NOTE:</b> Successful password changes take effect immediately.</p> <p>Default setting: Not set</p>
<b>System Password</b>	<p>Allows you to set, change or delete the system password.</p> <p><b>NOTE:</b> Successful password changes take effect immediately.</p> <p>Default setting: Not set</p>
<b>M.2 SATA SSD Password</b>	<p>Allows you to set, change, or delete the M.2 SATA SSD password.</p> <p><b>NOTE:</b> Successful password changes take effect immediately.</p> <p>Default setting: Not set</p>
<b>Strong Password</b>	<p>Allows you to enforce the option to always set strong passwords.</p> <p>Default Setting: Enable Strong Password is not selected.</p> <p><b>NOTE:</b> If Strong Password is enabled, Admin and System passwords must contain at least one uppercase character, one lowercase character and be at least 8 characters long.</p>
<b>Password Configuration</b>	<p>Allows you to determine the minimum and maximum length of Administrator and System passwords.</p>
<b>Password Bypass</b>	<p>Allows you to enable or disable the permission to bypass the System and the Internal HDD password, when they are set. The options are:</p> <ul style="list-style-type: none"><li>· Disabled</li><li>· Reboot bypass</li></ul> <p>Default setting: Disabled</p>
<b>Password Change</b>	<p>Allows you to enable the disable permission to the System and Hard Drive passwords when the admin password is set.</p> <p>Default setting: <b>Allow Non-Admin Password Changes</b> is selected.</p>
<b>Non-Admin Setup Changes</b>	<p>Allows you to determine whether changes to the setup options are allowed when an Administrator Password is set. If disabled the setup options are locked by the admin password.</p>



Option	Description
<b>UEFI Capsule Firmware Updates</b>	<p>Allows you to control whether this system allows BIOS updates via UEFI capsule update packages.</p> <ul style="list-style-type: none"> <li>· Enable UEFI Capsule Firmware Updates (enabled by default)</li> </ul>
<b>TPM 2.0 Security</b>	<p>Allows you to enable the Trusted Platform Module (TPM) during POST. The options are:</p> <ul style="list-style-type: none"> <li>· TPM On (enabled by default)</li> <li>· Clear</li> <li>· PPI Bypass for Enabled Commands(enabled by default)</li> <li>· Attestation Enable (enabled by default)</li> <li>· Key Storage Enable (enabled by default)</li> <li>· PPI Bypass for Disabled Commands</li> <li>· SHA-256 (enabled by default)</li> <li>· Disabled</li> <li>· Enabled</li> </ul> <p><b>i NOTE: To upgrade or downgrade TPM1.2/2.0, download the TPM wrapper tool (software).</b></p>
<b>Computrace</b>	<p>Allows you to activate or disable the optional Computrace software The options are:</p> <ul style="list-style-type: none"> <li>· Deactivate</li> <li>· Disable</li> <li>· Activate</li> </ul> <p><b>i NOTE: The Activate and Disable options will permanently activate or disable the feature and no further changes will be allowed</b></p> <p>Default setting: Deactivate</p>
<b>CPU XD Support</b>	<p>Allows you to enable the Execute Disable mode of the processor.</p> <p>Enable CPU XD Support (default)</p>
<b>OROM Keyboard Access</b>	<p>Allows you to set an option to enter the Option ROM Configuration screens using hotkeys during boot. The options are:</p> <ul style="list-style-type: none"> <li>· Enable</li> <li>· One Time Enable</li> <li>· Disable</li> </ul> <p>Default setting: Enable</p>
<b>Admin Setup Lockout</b>	<p>Allows you to prevent users from entering Setup when an Administrator password is set.</p> <p>Default Setting: <b>Disabled</b></p>
<b>Master Password Lockout</b>	<p>Allows you to disable master password support. Hard disk password need to be cleared before the setting can be changed</p> <ul style="list-style-type: none"> <li>· Enable Master Password Lockout (Disabled)</li> </ul>



# Secure Boot screen options

Option	Description
<b>Secure Boot Enable</b>	<p>This option enables or disables the <b>Secure Boot</b> feature.</p> <ul style="list-style-type: none"><li>· Disabled</li><li>· Enabled</li></ul> <p>Default setting: Enabled.</p>
<b>Expert Key Management</b>	<p>Allows you to manipulate the security key databases only if the system is in Custom Mode. The <b>Enable Custom Mode</b> option is disabled by default. The options are:</p> <ul style="list-style-type: none"><li>· PK</li><li>· KEK</li><li>· db</li><li>· dbx</li></ul> <p>If you enable the <b>Custom Mode</b>, the relevant options for <b>PK, KEK, db, and dbx</b> appear. The options are:</p> <ul style="list-style-type: none"><li>· <b>Save to File</b>—Saves the key to a user-selected file</li><li>· <b>Replace from File</b>—Replaces the current key with a key from a user-selected file</li><li>· <b>Append from File</b>—Adds a key to the current database from a user-selected file</li><li>· <b>Delete</b>—Deletes the selected key</li><li>· <b>Reset All Keys</b>—Resets to default setting</li><li>· <b>Delete All Keys</b>—Deletes all the keys</li></ul> <p><b>NOTE:</b> If you disable the Custom Mode, all the changes made will be erased and the keys will restore to default settings.</p>

# Intel Software Guard Extensions

Option	Description
<b>Intel SGX Enable</b>	<p>This field specifies you to provide a secured environment for running code/storing sensitive information in the context of the main OS. The options are:</p> <ul style="list-style-type: none"><li>· Disabled</li><li>· Enabled</li><li>· Software Controlled: This option is enabled by default.</li></ul>
<b>Enclave Memory Size</b>	<p>This option sets SGX Enclave Reserve Memory Size. The options are:</p> <ul style="list-style-type: none"><li>· 32 MB</li><li>· 64 MB</li><li>· 128 MB</li></ul>



# Performance screen options

Option	Description
<b>Multi Core Support</b>	<p>This field specifies whether the process has one or all cores enabled. The performance of some applications improves with the additional cores.</p> <ul style="list-style-type: none"><li>· All (By default enabled)</li><li>· 1</li><li>· 2</li><li>· 3</li></ul>
<b>Intel SpeedStep</b>	<p>Allows you to enable or disable the Intel SpeedStep feature.</p> <ul style="list-style-type: none"><li>· Enable Intel SpeedStep</li></ul> <p>Default setting: The option is enabled.</p>
<b>C-States Control</b>	<p>Allows you to enable or disable the additional processor sleep states.</p> <ul style="list-style-type: none"><li>· C states</li></ul> <p>Default setting: The option is enabled.</p>
<b>Intel TurboBoost</b>	<p>Allows you to enable or disable the Intel TurboBoost mode of the processor.</p> <ul style="list-style-type: none"><li>· Enable Intel TurboBoost</li></ul> <p>Default setting: The option is enabled.</p>

# Power Management screen options

Option	Description
<b>AC Behavior</b>	<p>Allows you to enable or disable the computer from turning on automatically when an AC adapter is connected.</p> <p>Default setting: Wake on AC is not selected.</p>
<b>Auto On Time</b>	<p>Allows you to set the time at which the computer must turn on automatically. The options are:</p> <ul style="list-style-type: none"><li>· Disabled</li><li>· Every Day</li><li>· Weekdays</li><li>· Select Days</li></ul> <p>Default setting: Disabled</p>
<b>USB Wake Support</b>	<p>Allows you to enable USB devices to wake the system from Standby.</p> <p><b>NOTE:</b> This feature is only functional when the AC power adapter is connected. If the AC power adapter is removed during Standby, the system setup removes power from all the USB ports to conserve battery power.</p> <ul style="list-style-type: none"><li>· Enable USB Wake Support</li><li>· Wake on Dell USB-C Dock (By default enable)</li></ul>



Option	Description
<b>Wireless Radio Control</b>	<p>Allows you to enable or disable the feature that automatically switches from wired or wireless networks without depending on the physical connection.</p> <ul style="list-style-type: none"> <li>· Control WLAN Radio</li> <li>· Control WWAN Radio</li> </ul> <p>Default setting: The option is disabled.</p>
<b>Wake on LAN/WLAN</b>	<p>Allows you to enable or disable the feature that powers on the computer from the Off state when triggered by a LAN signal.</p> <ul style="list-style-type: none"> <li>· Disabled</li> <li>· LAN Only</li> <li>· WLAN Only</li> <li>· LAN or WLAN</li> </ul> <p>Default setting: Disabled</p>
<b>Block Sleep</b>	<p>This option lets you block entering to sleep (S3 state) in operating system environment.</p> <p>Block Sleep (S3 state)</p> <p>Default setting: This option is disabled</p>
<b>Peak Shift</b>	<p>This option enables you to minimize the AC power consumption during the peak power times of day. After you enable this option, your system runs only in battery even if the AC is attached.</p>
<b>Advanced Battery Charge Configuration</b>	<p>This option enables you to maximize the battery health. By enabling this option, your system uses the standard charging algorithm and other techniques, during the non-work hours to improve the battery health.</p> <p>Disabled</p> <p>Default setting: Disabled</p>
<b>Primary Battery Charge Configuration</b>	<p>Allows you to select the charging mode for the battery. The options are:</p> <ul style="list-style-type: none"> <li>· Adaptive</li> <li>· Standard — Fully charges your battery at a standard rate.</li> <li>· ExpressCharge — The battery charges over a shorter period of time using Dell's fast charging technology. This option is enabled by default.</li> <li>· Primarily AC use</li> <li>· Custom</li> </ul> <p>If Custom Charge is selected, you can also configure Custom Charge Start and Custom Charge Stop.</p> <p><b>NOTE:</b> All charging mode may not be available for all the batteries. To enable this option, disable the Advanced Battery Charge Configuration option.</p>
<b>Sleep Mode</b>	<p>This option is used to select which sleep mode will be used by operating system.</p> <ul style="list-style-type: none"> <li>· OS Automatic Selection</li> <li>· Force S3 (By default enable)</li> </ul>
<b>Type-C Connector Power</b>	<p>This option lets you set the maximum power that can be drawn from the USB Type-C connector.</p> <ul style="list-style-type: none"> <li>· 7.5 Watts (By default enable)</li> </ul>



Option	Description
	<ul style="list-style-type: none"> <li>15 Watts</li> </ul>

## POST Behavior screen options

Option	Description
<b>Adapter Warnings</b>	<p>Allows you to enable or disable the system setup (BIOS) warning messages when you use certain power adapters.</p> <p>Default setting: Enable Adapter Warnings</p>
<b>Keypad (Embedded)</b>	<p>Allows you to choose one of two methods to enable the keypad that is embedded in the internal keyboard.</p> <ul style="list-style-type: none"> <li>Fn Key Only: This option is enabled by default.</li> <li>By Numlock</li> </ul> <p><b>NOTE:</b> When setup is running, this option has no effect. Setup works in Fn Key Only mode.</p>
<b>Mouse/Touchpad</b>	<p>Allows you to define how the system handles mouse and touch pad input. The options are:</p> <ul style="list-style-type: none"> <li>Serial Mouse</li> <li>PS2 Mouse</li> <li>Touchpad/PS-2 Mouse: This option is enabled by default.</li> </ul>
<b>Numlock Enable</b>	<p>Allows you to enable the Numlock option when the computer boots.</p> <p>Enable Network. This option is enabled by default.</p>
<b>Fn Key Emulation</b>	<p>Allows you to set the option where the Scroll Lock key is used to simulate the Fn key feature.</p> <p>Enable Fn Key Emulation (default)</p>
<b>Fn Lock Options</b>	<p>Allows you to let hot key combinations Fn + Esc toggle the primary behavior of F1–F12, between their standard and secondary functions. If you disable this option, you cannot toggle dynamically the primary behavior of these keys. The available options are:</p> <ul style="list-style-type: none"> <li>Fn Lock. This option is selected by default.</li> <li>Lock Mode Disable/Standard</li> <li>Lock Mode Enable/Secondary</li> </ul>
<b>Fastboot</b>	<p>Allows you to speed up the boot process by bypassing some of the compatibility steps. The options are:</p> <ul style="list-style-type: none"> <li>Minimal</li> <li>Thorough (default)</li> <li>Auto</li> </ul>
<b>Extended BIOS POST Time</b>	<p>Allows you to create an additional preboot delay. The options are:</p> <ul style="list-style-type: none"> <li>0 seconds. This option is enabled by default.</li> <li>5 seconds</li> <li>10 seconds</li> </ul>
<b>Full Screen Logo</b>	<p>This option will display full screen logo if your image match screen resolution</p> <ul style="list-style-type: none"> <li>Enable Full Screen Logo</li> </ul>



Option	Description
<b>Warnings and Error</b>	<p>This option will cause the boot process to only pause when warnings or errors are detected.</p> <ul style="list-style-type: none"> <li>· Prompt on Warnings and Errors This option is enabled by default.</li> <li>· Continue on Warnings</li> <li>· Continue on Warnings and Errors</li> </ul> <p><b>NOTE:</b> Error deemed critical to the operation of the system hardware will always halt the system.</p>
<h2>Virtualization support screen options</h2>	
<b>Virtualization</b>	<p>Allows you to enable or disable the Intel Virtualization Technology.</p> <p>Enable Intel Virtualization Technology: This option is enabled by default.</p>
<b>VT for Direct I/O</b>	<p>Enables or disables the Virtual Machine Monitor (VMM) from utilizing the additional hardware capabilities provided by Intel® Virtualization technology for direct I/O.</p> <p>Enable VT for Direct I/O: This option is enabled by default.</p>
<b>Trusted Execution</b>	<p>This option specifies whether a Measured Virtual Machine Monitor (MVMM) can utilize the additional hardware capabilities provided by Intel Trusted Execution Technology. The TPM Virtualization Technology, and Virtualization technology for direct I/O must be enabled to use this feature.</p> <p>Trusted Execution: This option is enabled by default.</p>

## Wireless screen options

Option	Description
<b>Wireless Switch</b>	<p>Allows to set the wireless devices that can be controlled by the wireless switch. The options are:</p> <ul style="list-style-type: none"> <li>· WWAN</li> <li>· GPS (on WWAN Module)</li> <li>· WLAN/WiGig</li> <li>· Bluetooth</li> </ul> <p>All the options are enabled by default.</p> <p><b>NOTE:</b> For WLAN and WiGig enable or disable controls are tied together and they cannot be enabled or disabled independently.</p>
<b>Wireless Device Enable</b>	<p>Allows you to enable or disable the internal wireless devices.</p> <ul style="list-style-type: none"> <li>· WWAN/GPS</li> <li>· WLAN/WiGig</li> <li>· Bluetooth</li> </ul> <p>All the options are enabled by default.</p>

# Maintenance screen options

Option	Description
<b>Service Tag</b>	Displays the Service Tag of your computer.
<b>Asset Tag</b>	Allows you to create a system asset tag if an asset tag is not already set. This option is not set by default.
<b>BIOS Downgrade</b>	This controls flashing of the system firmware to previous revisions. <ul style="list-style-type: none"><li>· Allows BIOS Downgrade (enabled by default)</li></ul>
<b>Data Wipe</b>	This field allows users to erase the data securely from all internal storage devices. The following is list of devices affected: <ul style="list-style-type: none"><li>· Internal SATA HDD/SSD</li><li>· Internal M.2 SATA SDD</li><li>· Internal M.2 PCIe SSD</li><li>· Internal eMMC</li></ul>
<b>BIOS Recovery</b>	This field allows you to recover from certain corrupted BIOS conditions from a recover file on the user primary hard drive or an external USB key. <ul style="list-style-type: none"><li>· BIOS Recovery from Hard Drive (enabled by default)</li><li>· BIOS Auto-Recovery</li><li>· Always perform Integrity Check</li></ul>

# System Log screen options

Option	Description
<b>BIOS Events</b>	Allows you to view and clear the System Setup (BIOS) POST events.
<b>Thermal Events</b>	Allows you to view and clear the System Setup (Thermal) events.
<b>Power Events</b>	Allows you to view and clear the System Setup (Power) events.

# Updating the BIOS in Windows

It is recommended to update your BIOS (System Setup), when you replace the system board or if an update is available. For laptops, ensure that your computer battery is fully charged and connected to a power outlet

**NOTE:** If BitLocker is enabled, it must be suspended prior to updating the system BIOS, and then re-enabled after the BIOS update is completed.

- 1 Restart the computer.
- 2 Go to **Dell.com/support**.
  - Enter the **Service Tag** or **Express Service Code** and click **Submit**.
  - Click **Detect Product** and follow the instructions on screen.
- 3 If you are unable to detect or find the Service Tag, click **Choose from all products**.
- 4 Choose the **Products** category from the list.

**NOTE:** Choose the appropriate category to reach the product page

- 5 Select your computer model and the **Product Support** page of your computer appears.
- 6 Click **Get drivers** and click **Drivers and Downloads**.  
The Drivers and Downloads section opens.



- 7 Click **Find it myself**.
- 8 Click **BIOS** to view the BIOS versions.
- 9 Identify the latest BIOS file and click **Download**.
- 10 Select your preferred download method in the **Please select your download method below** window, click **Download File**.  
The **File Download** window appears.
- 11 Click **Save** to save the file on your computer.
- 12 Click **Run** to install the updated BIOS settings on your computer.  
Follow the instructions on the screen.

**NOTE:** It is recommended not to update the BIOS version for more than three revisions. For example: If you want to update the BIOS from 1.0 to 7.0, then install version 4.0 first and then install version 7.0.

## System and setup password

You can create a system password and a setup password to secure your computer.

Password type	Description
System password	Password that you must enter to log on to your system.
Setup password	Password that you must enter to access and make changes to the BIOS settings of your computer.

**CAUTION:** The password features provide a basic level of security for the data on your computer.

**CAUTION:** Anyone can access the data stored on your computer if it is not locked and left unattended.

**NOTE:** System and setup password feature is disabled.

## Assigning a system password and setup password

You can assign a new **System Password** only when the status is in **Not Set**.

To enter the system setup, press F2 immediately after a power-on or re-boot.

- 1 In the **System BIOS** or **System Setup** screen, select **Security** and press Enter.  
The **Security** screen is displayed.
- 2 Select **System Password** and create a password in the **Enter the new password** field.  
Use the following guidelines to assign the system password:
  - A password can have up to 32 characters.
  - The password can contain the numbers 0 through 9.
  - Only lower case letters are valid, upper case letters are not allowed.
  - Only the following special characters are allowed: space, ("), (+), (,), (-), (.), (/), (;), ([], (\), (]), (`).
- 3 Type the system password that you entered earlier in the **Confirm new password** field and click **OK**.
- 4 Press Esc and a message prompts you to save the changes.
- 5 Press Y to save the changes.  
The computer reboots.

## Deleting or changing an existing system and or setup password


Ensure that the **Password Status** is Unlocked (in the System Setup) before attempting to delete or change the existing System and/or Setup password. You cannot delete or change an existing System or Setup password, if the **Password Status** is Locked.

To enter the System Setup, press F2 immediately after a power-on or reboot.

- 1 In the **System BIOS** or **System Setup** screen, select **System Security** and press Enter.

The **System Security** screen is displayed.

- 2 In the **System Security** screen, verify that **Password Status** is **Unlocked**.
- 3 Select **System Password**, alter or delete the existing system password and press Enter or Tab.
- 4 Select **Setup Password**, alter or delete the existing setup password and press Enter or Tab.

 **NOTE: If you change the System and/or Setup password, re-enter the new password when promoted. If you delete the System and/or Setup password, confirm the deletion when promoted.**

- 5 Press Esc and a message prompts you to save the changes.
- 6 Press Y to save the changes and exit from System Setup.

The computer reboots.



## Supported operating systems

The following list shows supported operating systems

**Table 5. Supported operating systems**

Supported operating systems	Operating System Description
<b>Microsoft Windows 10</b>	<ul style="list-style-type: none"> <li>• Microsoft Windows 10 Pro (64-bit)</li> <li>• Microsoft Windows 10 Home (64-bit)</li> </ul>
<b>Other</b>	<ul style="list-style-type: none"> <li>• Ubuntu</li> <li>• Neoklylin V6.0</li> </ul>
<b>OS Media Support</b>	<ul style="list-style-type: none"> <li>• Dell.com/support to download eligible Windows OS</li> <li>• USB media available for upsell</li> </ul>

## Downloading drivers

- 1 Turn on the laptop.
- 2 Go to **Dell.com/support**.
- 3 Click **Product Support**, enter the Service Tag of your laptop, and then click **Submit**.

**NOTE:** If you do not have the Service Tag, use the auto detect feature or manually browse for your laptop model.

- 4 Click **Drivers and Downloads**.
- 5 Select the operating system installed on your laptop.
- 6 Scroll down the page and select the graphic driver to install.
- 7 Click **Download File** to download the graphic driver for your laptop.
- 8 After the download is complete, navigate to the folder where you saved the graphic driver file.
- 9 Double-click the graphic driver file icon and follow the instructions on the screen.

## Downloading the chipset driver

- 1 Turn on the laptop.
- 2 Go to **Dell.com/support**.
- 3 Click **Product Support**, enter the Service Tag of your laptop, and then click **Submit**.

**NOTE:** If you do not have the Service Tag, use the autodetect feature or manually browse for your laptop model.

- 4 Click **Drivers and Downloads**.
- 5 Select the operating system installed on your laptop.
- 6 Scroll down the page, expand **Chipset**, and select your chipset driver.
- 7 Click **Download File** to download the latest version of the chipset driver for your laptop.
- 8 After the download is complete, navigate to the folder where you saved the driver file.

9 Double-click the chipset driver file icon and follow the instructions on the screen.

# Intel chipset drivers

Verify if the Intel chipset drivers are already installed in the laptop.

**Table 6. Intel chipset drivers**

### Before installation

- Other devices
  - PCI Data Acquisition and Signal Processing Controller
  - PCI Device
  - PCI Memory Controller
  - PCI Simple Communications Controller
  - SM Bus Controller
  - Unknown device
- System devices
  - ACPI Fan
  - ACPI Fan
  - ACPI Fan
  - ACPI Fan
  - ACPI Fan
  - ACPI Fixed Feature Button
  - ACPI Power Button
  - ACPI Processor Aggregator
  - ACPI Thermal Zone
  - ACPI Thermal Zone
  - Composite Bus Enumerator
  - High Definition Audio Controller
  - High precision event timer
  - Intel(R) Power Engine Plug-in
  - Legacy device
  - Microsoft ACPI-Compliant Embedded Controller
  - Microsoft ACPI-Compliant System
  - Microsoft System Management BIOS Driver
  - Microsoft UEFI-Compliant System
  - Microsoft Virtual Drive Enumerator
  - Microsoft Windows Management Interface for ACPI
  - Microsoft Windows Management Interface for ACPI
  - NDIS Virtual Network Adapter Enumerator
  - Numeric data processor
  - PCI Express Root Complex
  - PCI Express Root Port
  - PCI Express Root Port
  - PCI Express Root Port
  - PCI standard host CPU bridge
  - PCI standard ISA bridge
  - Plug and Play Software Device Enumerator
  - Programmable interrupt controller
  - Remote Desktop Device Redirector Bus
  - System CMOS/real time clock
  - System timer
  - UMBus Root Bus Enumerator

### After installation

- Other devices
  - PCI Device
  - PCI Simple Communications Controller
  - Unknown device
- System devices
  - ACPI Fan
  - ACPI Fan
  - ACPI Fan
  - ACPI Fan
  - ACPI Fan
  - ACPI Fixed Feature Button
  - ACPI Lid
  - ACPI Processor Aggregator
  - ACPI Sleep Button
  - ACPI Thermal Zone
  - ACPI Thermal Zone
  - ACPI Thermal Zone
  - Camera Sensor OV5670
  - Camera Sensor OV5658
  - Composite Bus Enumerator
  - High precision event timer
  - Intel(R) 100 Series Chipset Family LPC Controller (dSPI Controller) - 9D46
  - Intel(R) 100 Series Chipset Family PCI Express Root Port #10 - 9D19
  - Intel(R) 100 Series Chipset Family PCI Express Root Port #9 - 9D18
  - Intel(R) 100 Series Chipset Family PMIC - 9D21
  - Intel(R) 100 Series Chipset Family SMBUS - 9D23
  - Intel(R) 100 Series Chipset Family Thermal subsystem - 9D31
  - Intel(R) CIO2 Host Controller
  - Intel(R) Control Logic
  - Intel(R) Imaging Signal Processor 2500
  - Intel(R) Integrated Sensor Solution
  - Intel(R) Management Engine Interface
  - Intel(R) Power Engine Plug-in
  - Intel(R) Serial IO GPIO Host Controller - INT3448
  - Intel(R) Serial IO I2C Host Controller - 9D60
  - Intel(R) Serial IO I2C Host Controller - 9D61
  - Intel(R) Serial IO I2C Host Controller - 9D62
  - Intel(R) Serial IO I2C Host Controller - 9D63

# Intel HD Graphics drivers

Verify if the Intel HD Graphics drivers are already installed in the laptop.

**Table 7. Intel HD Graphics drivers**

### Before installation

- Display adapters
  - Microsoft Basic Display Adapter
- Sound, video and game controllers
  - High Definition Audio Device
  - High Definition Audio Device

### After installation



# Troubleshooting

## Enhanced Pre-Boot System Assessment — ePSA diagnostics

The ePSA diagnostics (also known as system diagnostics) performs a complete check of your hardware. The ePSA is embedded with the BIOS and is launched by the BIOS internally. The embedded system diagnostics provides a set of options for particular devices or device groups allowing you to:

- Run tests automatically or in an interactive mode
- Repeat tests
- Display or save test results
- Run thorough tests to introduce additional test options to provide extra information about the failed device(s)
- View status messages that inform you if tests are completed successfully
- View error messages that inform you of problems encountered during testing

**⚠ CAUTION: Use the system diagnostics to test only your computer. Using this program with other computers may cause invalid results or error messages.**

**ℹ NOTE: Some tests for specific devices require user interaction. Always ensure that you are present at the computer terminal when the diagnostic tests are performed.**

## Running the ePSA diagnostics

- 1 Power-on the computer.
- 2 As the computer boots, press the F12 key as the Dell logo appears.
- 3 On the boot menu screen, select the **Diagnostics** option.
- 4 Click the arrow key at the bottom left corner.  
Diagnostics front page is displayed.
- 5 Press the arrow in the lower-right corner to go to the page listing.  
The items detected are listed.
- 6 To run a diagnostic test on a specific device, press Esc and click **Yes** to stop the diagnostic test.
- 7 Select the device from the left pane and click **Run Tests**.
- 8 If there are any issues, error codes are displayed.  
Note the error code and validation number and contact Dell.

## Real Time Clock reset

The Real Time Clock (RTC) reset function allows you or the service technician to recover the recently launched model Dell Latitude and Precision systems from select **No POST/No Boot/No Power** situations. You can initiate the RTC reset on the system from a power off state only if it is connected to AC power. Press and hold the power button for 25 seconds. The system RTC reset occurs after you release the power button.

**ℹ NOTE: If AC power is disconnected from the system during the process or the power button is held longer than 40 seconds, the RTC reset process is aborted.**



The RTC reset will reset the BIOS to Defaults, un-provision Intel vPro and reset the system date and time. The following items are unaffected by the RTC reset:

- Service Tag
- Asset Tag
- Ownership Tag
- Admin Password
- System Password
- HDD Password
- Key Databases
- System Logs

The following items may or may not reset based on your custom BIOS setting selections:

- The Boot List
- Enable Legacy OROMs
- Secure Boot Enable
- Allow BIOS Downgrade



# Contacting Dell

**NOTE:** If you do not have an active Internet connection, you can find contact information on your purchase invoice, packing slip, bill, or Dell product catalog.

Dell provides several online and telephone-based support and service options. Availability varies by country and product, and some services may not be available in your area. To contact Dell for sales, technical support, or customer service issues:

- 1 Go to **Dell.com/support**.
- 2 Select your support category.
- 3 Verify your country or region in the **Choose a Country/Region** drop-down list at the bottom of the page.
- 4 Select the appropriate service or support link based on your need.